

Simsurveys Validation Benchmark

Commonwealth Fund / Kaiser Family Foundation

2015 National Survey of Primary Care Providers

Live vs Synthetic Results

Prepared for prospective Simsurveys clients

Executive Summary

This report compares published live results from the Commonwealth Fund / Kaiser Family Foundation 2015 National Survey of Primary Care Providers with synthetic results generated by the Simsurveys platform. Synthetic data were generated to mirror the original study population (MDs only).

Targeting and quotas. Total sample: n=1,624 primary care physicians (MDs only). The simulation did not apply demographic targeting for the items reported here; alignment on practice and demographic measures reflects emergent structure in the model.

Interpreting divergence metrics. KL divergence measures the difference between two response distributions. Values below 0.15 indicate **Good** alignment between synthetic and live results; values below 0.10 indicate **Excellent** agreement.

Question-level divergence summary

2a. Please indicate how satisfied you are with the following aspect of your medical practice: Your medical practice overall

KL Divergence: 0.006

2b. Please indicate how satisfied you are with the following aspect of your medical practice: The time you have to spend with each patient

KL Divergence: 0.029

2c. Please indicate how satisfied you are with the following aspect of your medical practice: The level of collaboration with other team members

KL Divergence: 0.008

4. Given what you know about the state of health care would you advise a qualified high school or college student to pursue a career as a primary care physician/nurse practitioner/physician assistant?

KL Divergence: 0.035

5. Would you say recent trends in health care:

KL Divergence: 0.070

7. Are you currently accepting new patients?

KL Divergence: 0.007

9. What proportion of your patients who request a same- or next-day appointment can get one?

KL Divergence: 0.029

10a. What percent of your patients fall into the following category: Medicare

KL Divergence: 0.101

10b. What percent of your patients fall into the following category: Medicaid

KL Divergence: 0.029

10c. What percent of your patients fall into the following category: Private insurance

KL Divergence: 0.028

10d. What percent of your patients fall into the following category: Uninsured

KL Divergence: 0.203

11a. Since January 2014 has the following increased decreased or stayed about the same: The total number of patients you see

KL Divergence: 0.007

11c. Since January 2014 has the following increased decreased or stayed about the same: The number of Medicaid patients you see

KL Divergence: 0.030

11d. Since January 2014 has the following increased decreased or stayed about the same: The number of patients you see who recently gained health insurance after being uninsured

KL Divergence: 0.025

11e. Since January 2014 has the following increased decreased or stayed about the same: The number of patients you see who are chronically ill
KL Divergence: 0.009

11b. Do you currently accept Medicare?
KL Divergence: 0.027

11d_1. In general how would you rate Medicare when it comes to the following: How much you are paid
KL Divergence: 0.014

11d_2. In general how would you rate Medicare when it comes to the following: Ease of administration related to reimbursements
KL Divergence: 0.025

11f. The Affordable Care Act provides a 10% increase in Medicare payments to certain primary care providers from 2011 through 2015. Were you aware of this increase?
KL Divergence: 0.010

11g. Has this Medicare payment bump made a big difference a small difference or no difference in your ability to serve your Medicare patients?
KL Divergence: 0.067

11h. Do you currently accept Medicaid?
KL Divergence: 0.004

11j_1. In general how would you rate Medicaid when it comes to the following: How much you are paid
KL Divergence: 0.054

11j_2. In general how would you rate Medicaid when it comes to the following: Ease of administration related to reimbursements
KL Divergence: 0.041

11i. Beginning in 2013 the Affordable Care Act temporarily increased Medicaid payments for primary care to match Medicare rates. Were you aware of this increase?
KL Divergence: 0.006

11m. Has this Medicaid payment bump made a big difference a small difference or no difference in your willingness to see Medicaid patients?
KL Divergence: 0.013

11n. Do you currently accept at least one form of private health insurance?
KL Divergence: 0.000

11o_1. In general how would you rate private health insurers when it comes to the following: How much you are paid
KL Divergence: 0.056

11o_2. In general how would you rate private health insurers when it comes to the following: Ease of administration related to reimbursements
KL Divergence: 0.032

12a_1. How if at all has the following changed in your practice since January 2014: Your ability to provide high quality care to all your patients
KL Divergence: 0.014

12a_2. How if at all has the following changed in your practice since January 2014: The amount of time you have available to spend with each patient
KL Divergence: 0.034

12a_3. How if at all has the following changed in your practice since January 2014: Patient satisfaction and experiences with care
KL Divergence: 0.026

12a_4. How if at all has the following changed in your practice since January 2014: Amount of time spent on administrative issues related to insurance

KL Divergence: 0.026

12a_5. How if at all has the following changed in your practice since January 2014: Your practice's ability to recruit and retain clinical staff including physicians nurse practitioners and physician assistants

KL Divergence: 0.011

25a. Do you think the following is having a positive negative or no impact on primary care providers' ability to provide quality care to their patients: Increased use of quality metrics to assess provider performance

KL Divergence: 0.040

25b. Do you think the following is having a positive negative or no impact on primary care providers' ability to provide quality care to their patients: Increased reliance on non-physician clinicians such as nurse practitioners and physician assistants

KL Divergence: 0.009

25c. Do you think the following is having a positive negative or no impact on primary care providers' ability to provide quality care to their patients: Increased use of medical homes

KL Divergence: 0.056

25d. Do you think the following is having a positive negative or no impact on primary care providers' ability to provide quality care to their patients: Increased use of Accountable Care Organizations (ACOs)

KL Divergence: 0.025

25e. Do you think the following is having a positive negative or no impact on primary care providers' ability to provide quality care to their patients: Increased use of health information technology

KL Divergence: 0.035

25f. Do you think the following is having a positive negative or no impact on primary care providers' ability to provide quality care to their patients: Programs that include financial penalties for unnecessary hospital admissions or readmissions

KL Divergence: 0.029

25h. Do you think the following is having a positive negative or no impact on primary care providers' ability to provide quality care to their patients: The expansion of Medicaid under the Affordable Care Act

KL Divergence: 0.017

26. Overall what is your opinion of the health care law that was passed in 2010 also known as the Affordable Care Act (ACA) or Obamacare?

KL Divergence: 0.000

28. As you may know the Affordable Care Act gives states the option of expanding their Medicaid program to cover more low-income uninsured adults. As far as you know has your state expanded its Medicaid program or not?

KL Divergence: 0.007

29a. Do you think the Affordable Care Act has had a positive negative or no impact on the following: Your medical practice overall

KL Divergence: 0.008

29b. Do you think the Affordable Care Act has had a positive negative or no impact on the following: The quality of care your patients receive

KL Divergence: 0.013

29c. Do you think the Affordable Care Act has had a positive negative or no impact on the following: The cost of health care for your patients

KL Divergence: 0.022

29d. Do you think the Affordable Care Act has had a positive negative or no impact on the following: The ability of your practice to meet patient demand

KL Divergence: 0.003

29e. Do you think the Affordable Care Act has had a positive negative or no impact on the following: Access to health care and insurance in the country overall

KL Divergence: 0.036

30. Do you feel you have enough information about the Affordable Care Act to understand how it is affecting your medical practice?
KL Divergence: 0.001

34d_1. How are you paid for seeing patients: Fee-for-service based
KL Divergence: 0.018

34d_2. How are you paid for seeing patients: Capitation
KL Divergence: 0.000

34d_3. How are you paid for seeing patients: Salary based
KL Divergence: 0.012

36a. Are you or your practice currently receiving incentives or payments based on the following: Quality of care or patient experiences
KL Divergence: 0.079

36b. Are you or your practice currently receiving incentives or payments based on the following: Utilization or efficiency in care
KL Divergence: 0.086

36c. Are you or your practice currently receiving incentives or payments based on the following: Qualifying as a Patient-Centered Medical Home (PCMH) or Advanced Primary Care Practice (APCP)
KL Divergence: 0.018

37. Is your practice currently participating or preparing to participate in an Accountable Care Organization (ACO) arrangement with Medicare or private insurers?
KL Divergence: 0.038

39a. In the past 2 years has your practice consolidated with or been acquired by: A group practice
KL Divergence: 0.050

39b. In the past 2 years has your practice consolidated with or been acquired by: A hospital
KL Divergence: 0.033

39c. In the past 2 years has your practice consolidated with or been acquired by: Another type of organization
KL Divergence: 0.011

40. Which of the following best describes your primary practice setting:
KL Divergence: 0.014

41. Are the patients served by your practice:
KL Divergence: 0.016

42a. About what percentage of your patients are: African American
KL Divergence: 0.052

42b. About what percentage of your patients are: Hispanic/Latino
KL Divergence: 0.007

42c. About what percentage of your patients are: Elderly (over age 65)
KL Divergence: 0.140

42d. About what percentage of your patients are: Speak little or no English
KL Divergence: 0.075

42e. About what percentage of your patients are: Undocumented immigrants
KL Divergence: 0.116

42f. About what percentage of your patients are: Have complex or numerous health problems
KL Divergence: 0.088

43. Where is your practice located?
KL Divergence: 0.004

44. How old are you?

KL Divergence: 0.103

45. Are you:

KL Divergence: 0.001

46. Are you of Hispanic or Latino background such as Mexican Puerto Rican Cuban or some other Latin American background?

KL Divergence: 0.000

47. What is your race?

KL Divergence: 0.053

48. In politics today do you consider yourself:

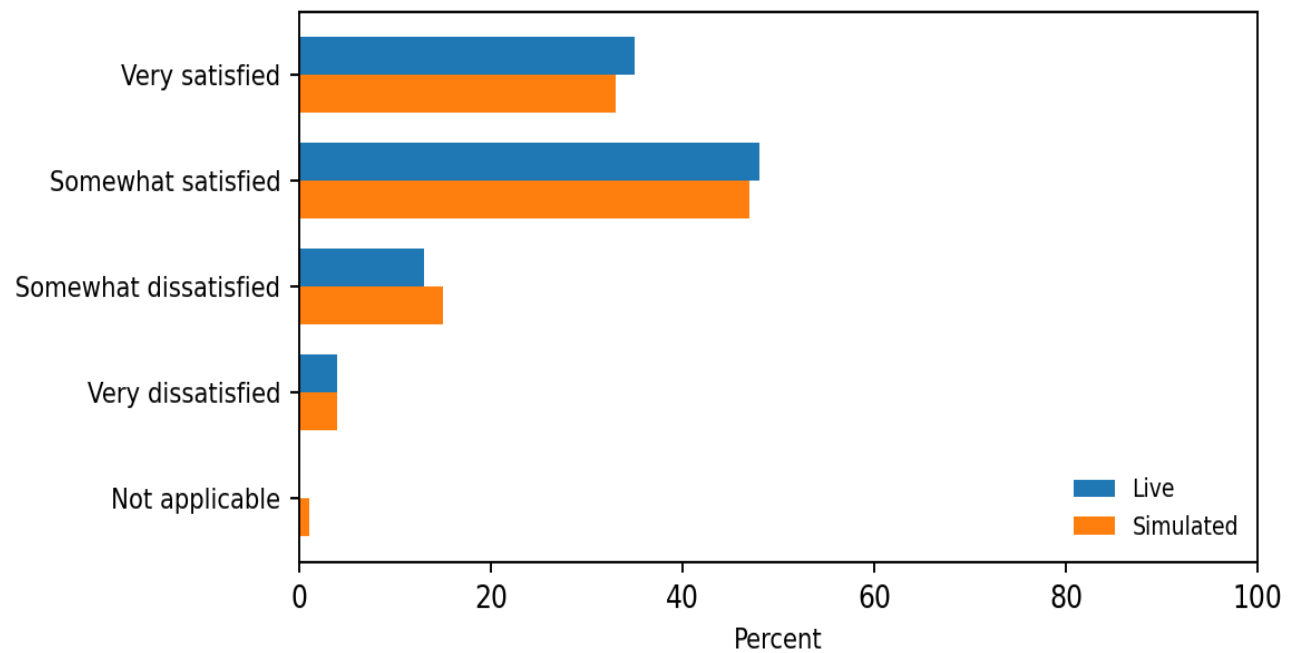
KL Divergence: 0.028

2a

Please indicate how satisfied you are with the following aspect of your medical practice: Your medical practice overall

KL Divergence (Live ■ Simulated): 0.006

Sample size: Live n=1,624 | Simulated n=1,624

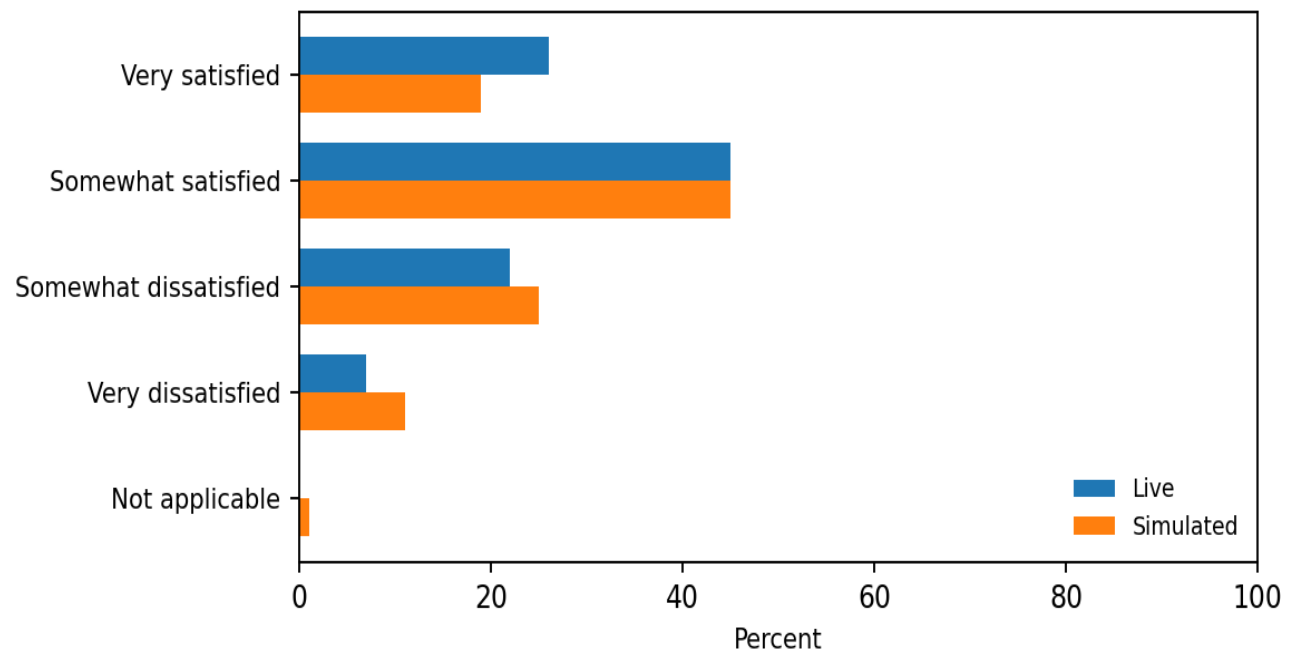


2b

Please indicate how satisfied you are with the following aspect of your medical practice: The time you have to spend with each patient

KL Divergence (Live ■ Simulated): 0.029

Sample size: Live n=1,624 | Simulated n=1,624

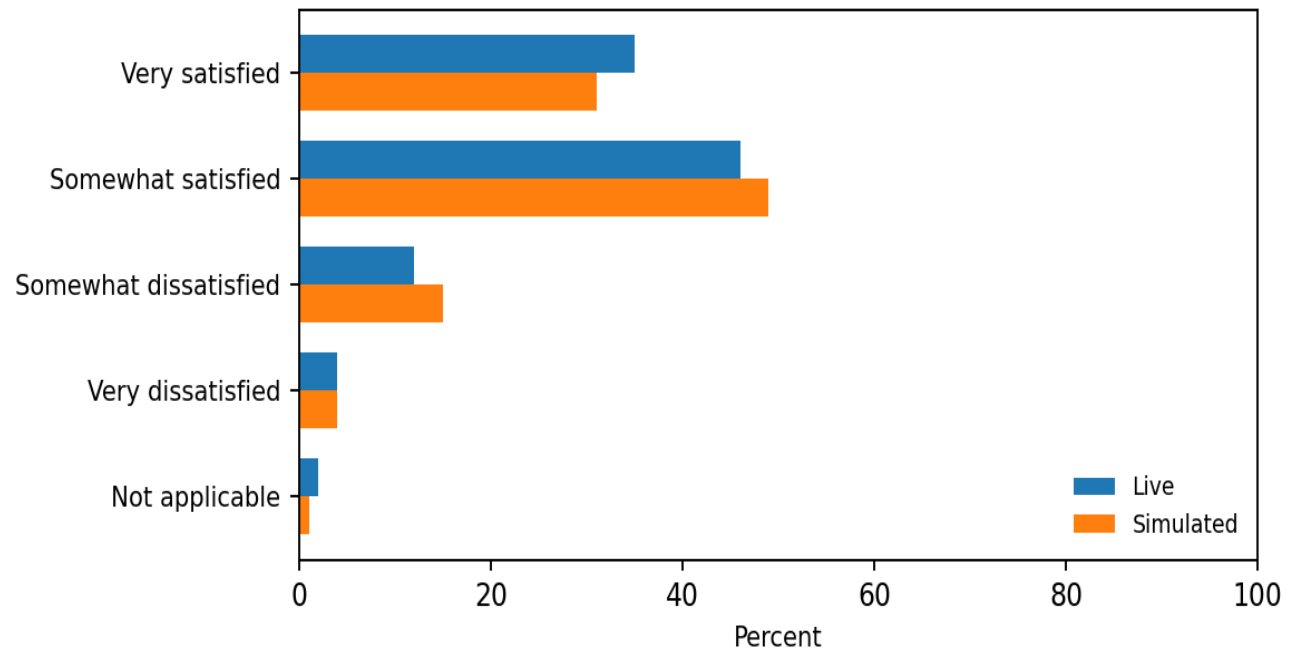


2c

Please indicate how satisfied you are with the following aspect of your medical practice: The level of collaboration with other team members

KL Divergence (Live ■ Simulated): 0.008

Sample size: Live n=1,624 | Simulated n=1,624

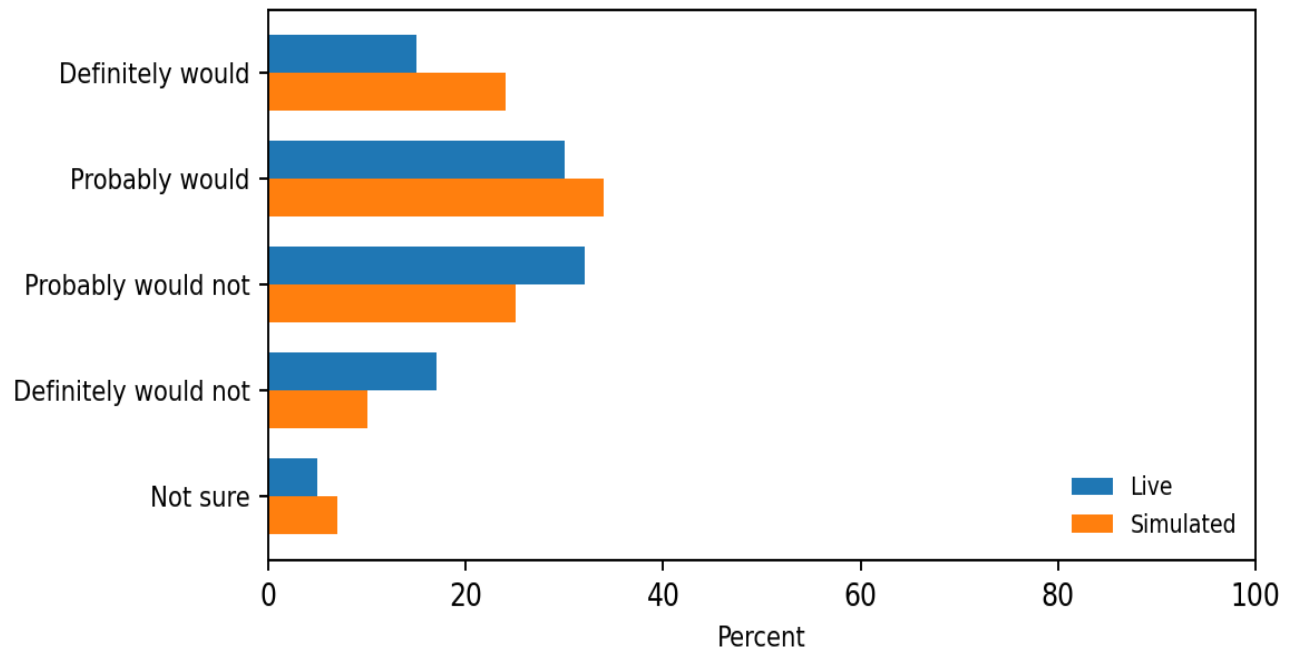


4

Given what you know about the state of health care would you advise a qualified high school or college student to pursue a career as a primary care physician/nurse practitioner/physician assistant?

KL Divergence (Live ■ Simulated): 0.035

Sample size: Live n=1,624 | Simulated n=1,624

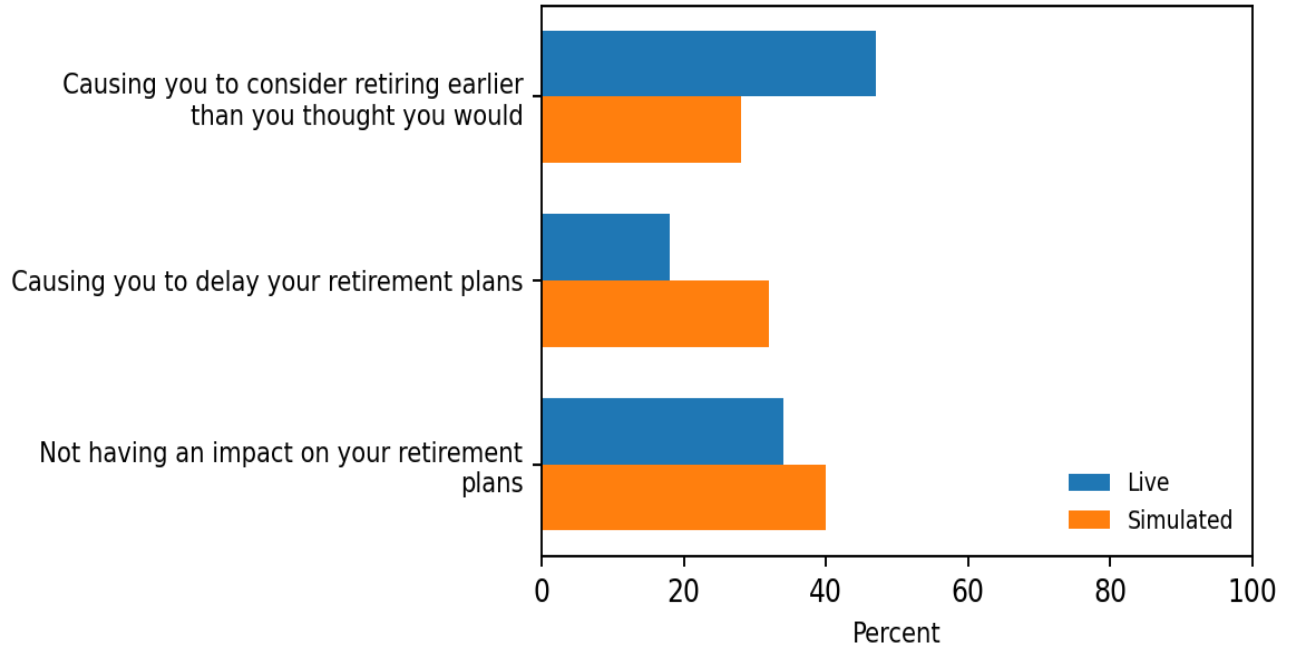


5

Would you say recent trends in health care:

KL Divergence (Live ■ Simulated): 0.070

Sample size: Live n=1,624 | Simulated n=1,624

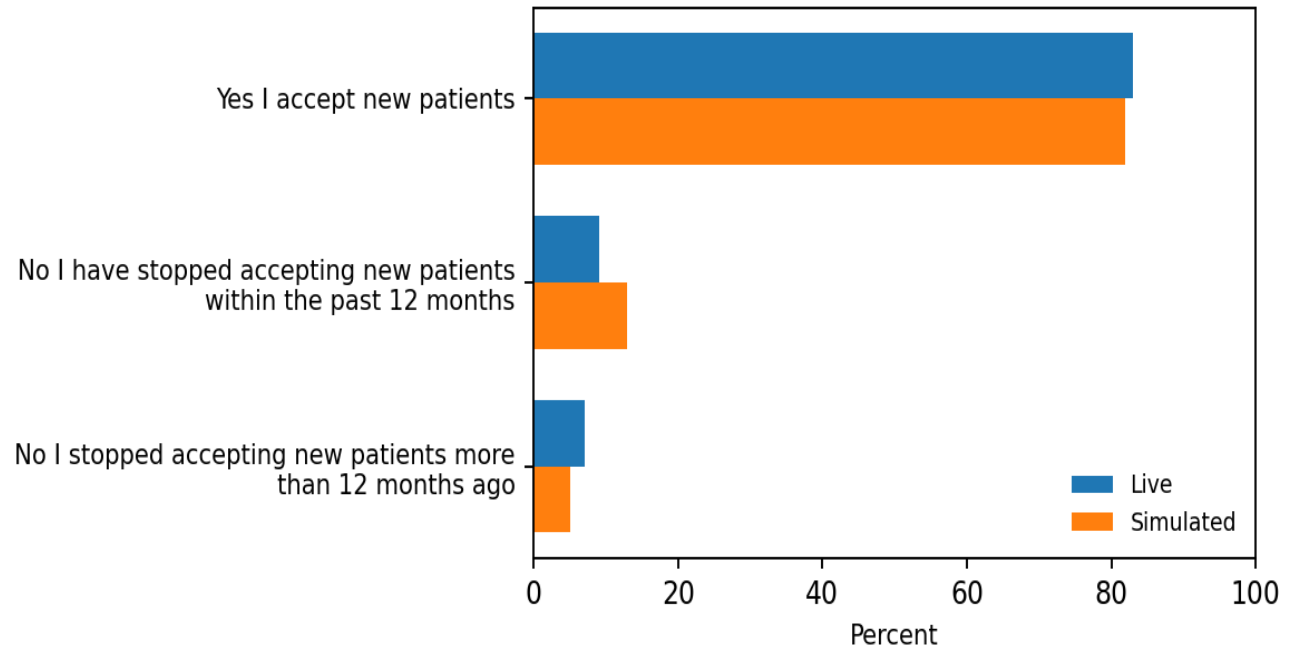


7

Are you currently accepting new patients?

KL Divergence (Live ■ Simulated): 0.007

Sample size: Live n=1,624 | Simulated n=1,624

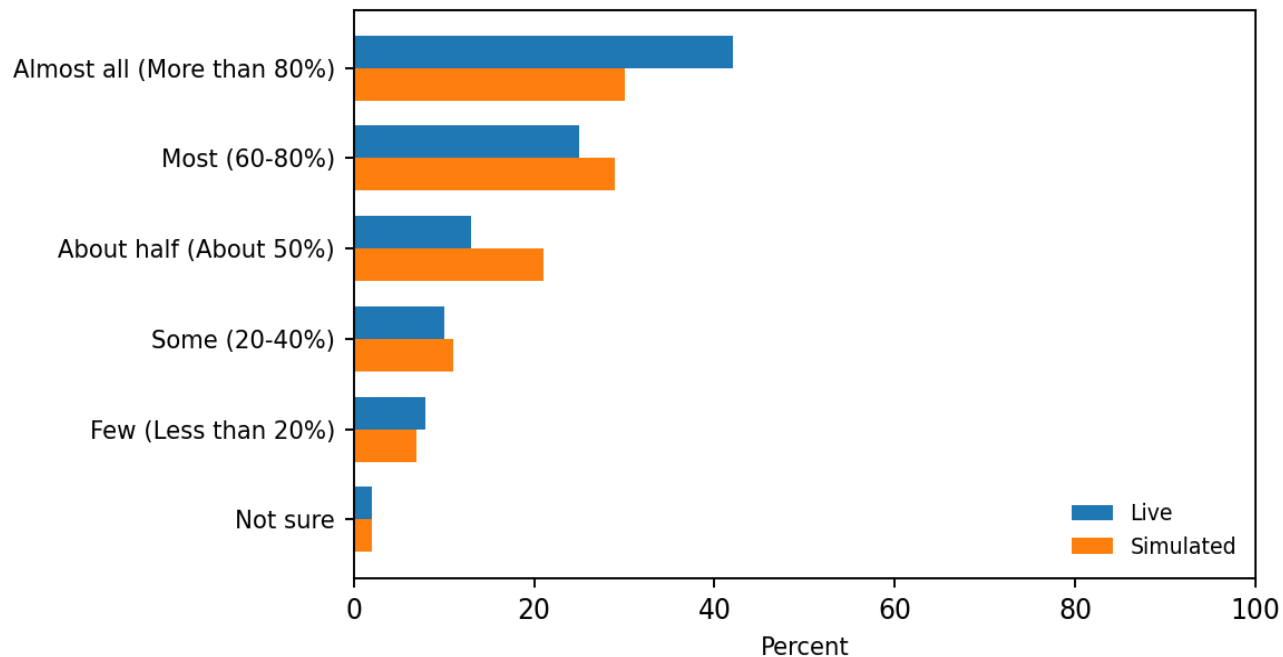


9

What proportion of your patients who request a same- or next-day appointment can get one?

KL Divergence (Live ■ Simulated): 0.029

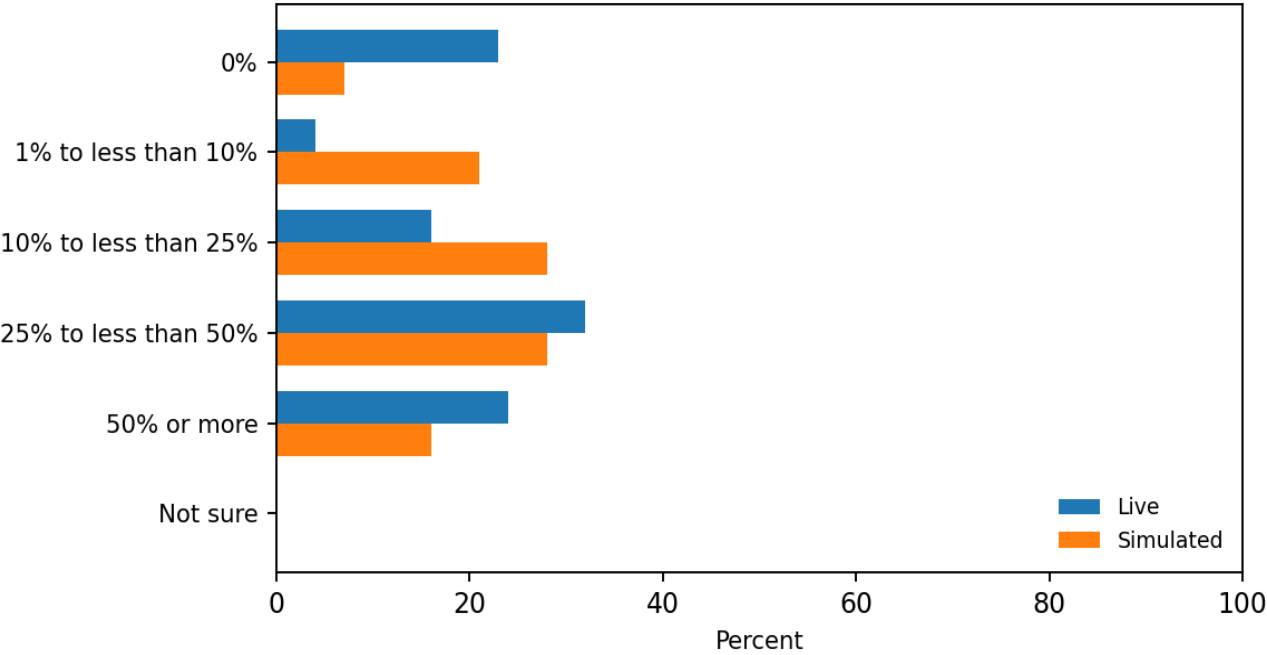
Sample size: Live n=1,624 | Simulated n=1,624



10a

What percent of your patients fall into the following category: Medicare

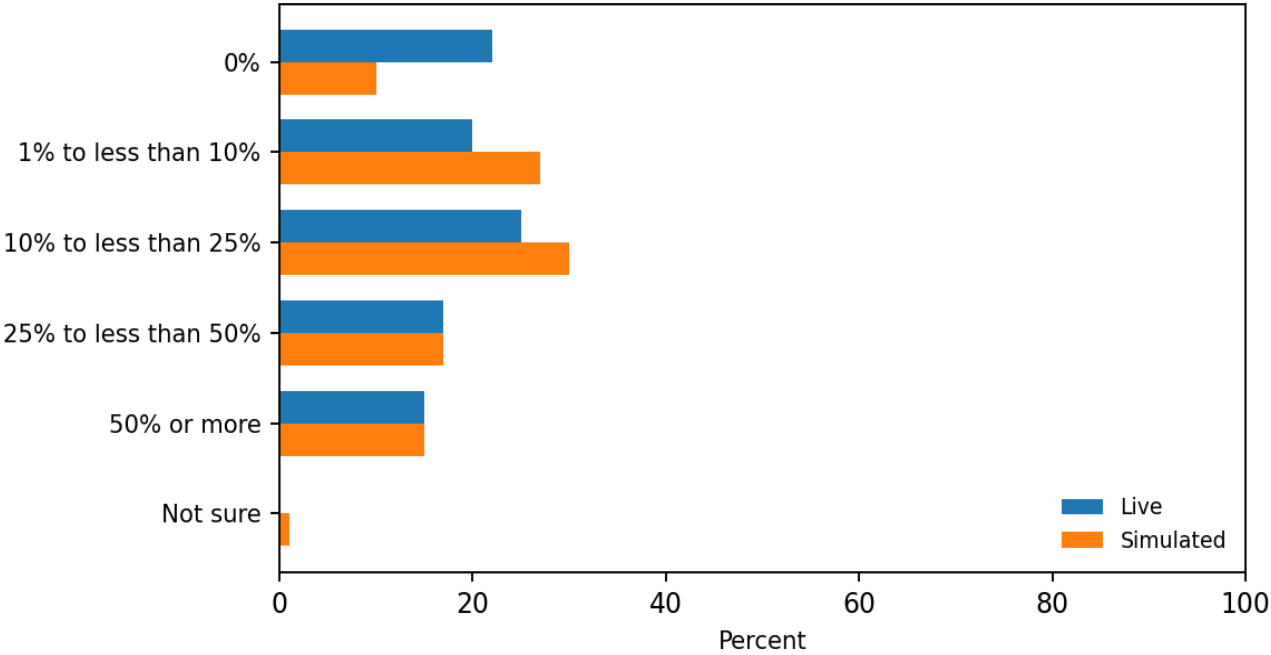
KL Divergence (Live ■ Simulated): 0.101
Sample size: Live n=1,624 | Simulated n=1,624



10b

What percent of your patients fall into the following category: Medicaid

KL Divergence (Live ■ Simulated): 0.029
Sample size: Live n=1,624 | Simulated n=1,624

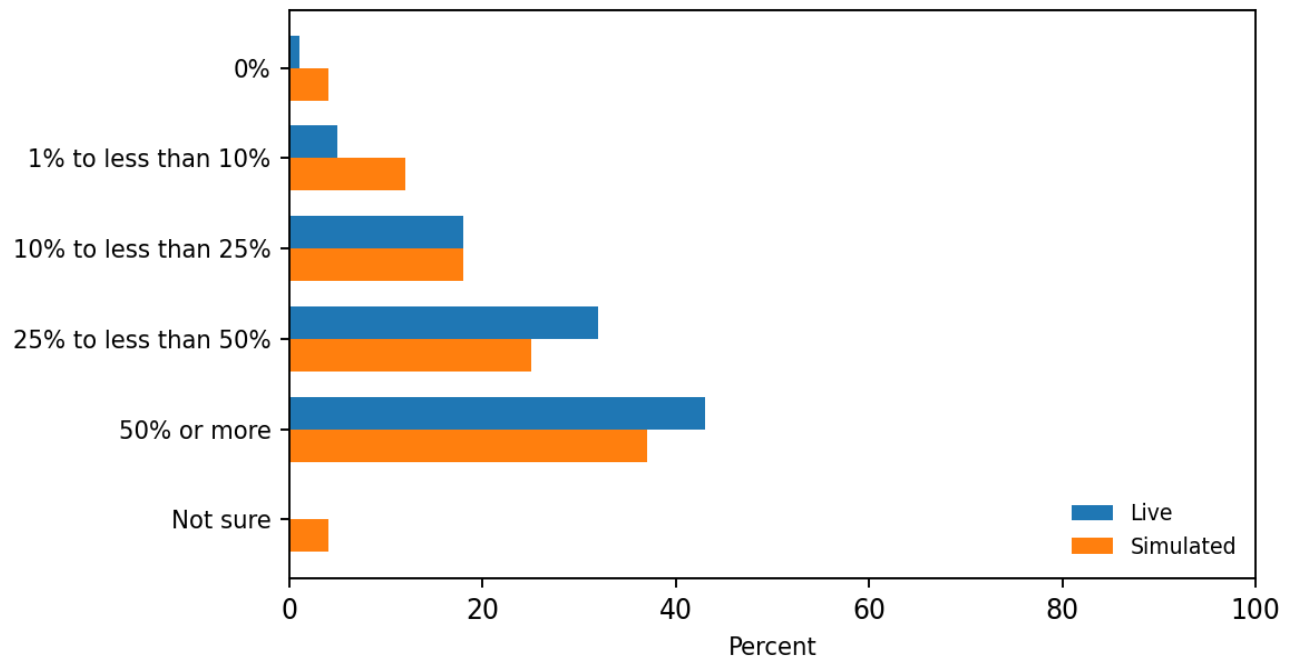


10c

What percent of your patients fall into the following category: Private insurance

KL Divergence (Live ■ Simulated): 0.028

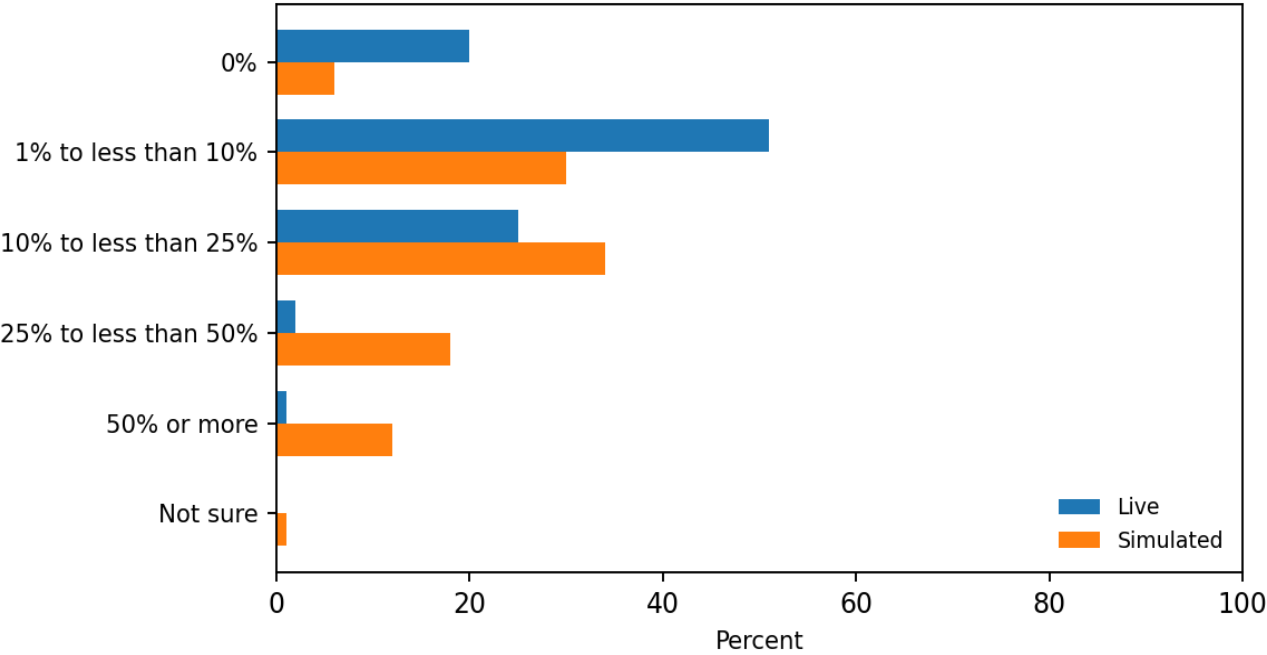
Sample size: Live n=1,624 | Simulated n=1,624



10d

What percent of your patients fall into the following category: Uninsured

KL Divergence (Live ■ Simulated): 0.203
Sample size: Live n=1,624 | Simulated n=1,624

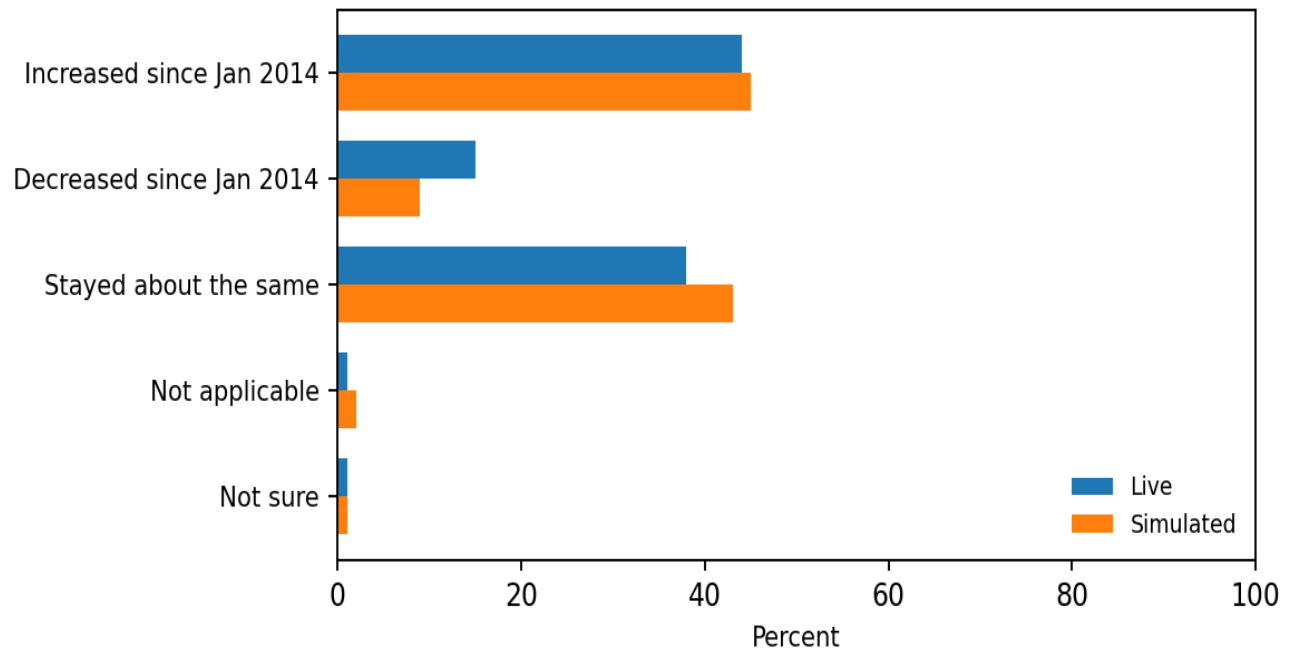


11a

Since January 2014 has the following increased decreased or stayed about the same: The total number of patients you see

KL Divergence (Live ■ Simulated): 0.007

Sample size: Live n=1,624 | Simulated n=1,624

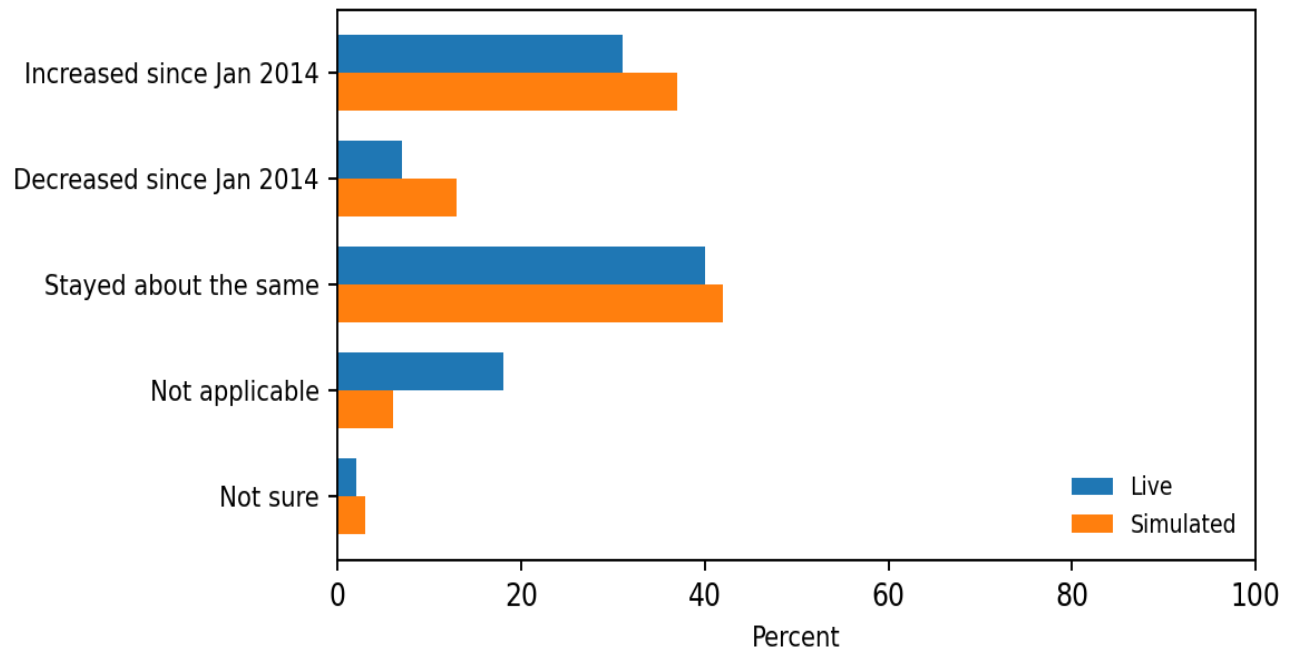


11c

Since January 2014 has the following increased decreased or stayed about the same: The number of Medicaid patients you see

KL Divergence (Live ■ Simulated): 0.030

Sample size: Live n=1,624 | Simulated n=1,624

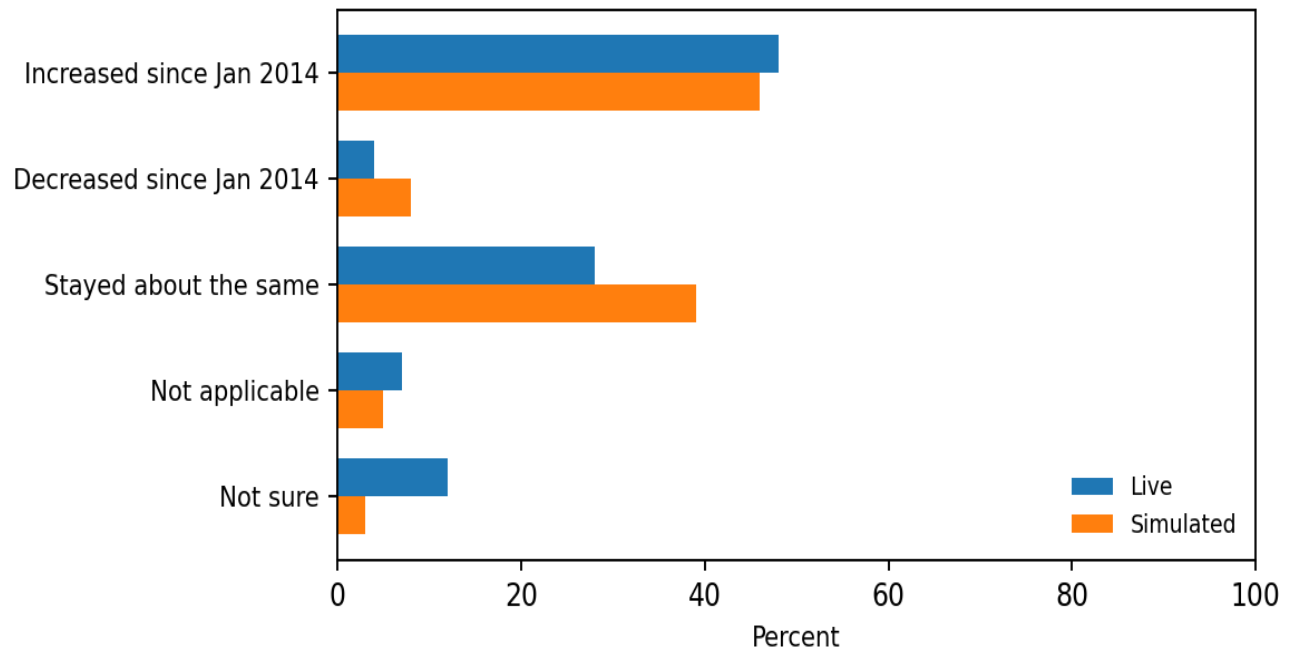


11d

Since January 2014 has the following increased decreased or stayed about the same: The number of patients you see who recently gained health insurance after being uninsured

KL Divergence (Live ■ Simulated): 0.025

Sample size: Live n=1,624 | Simulated n=1,624

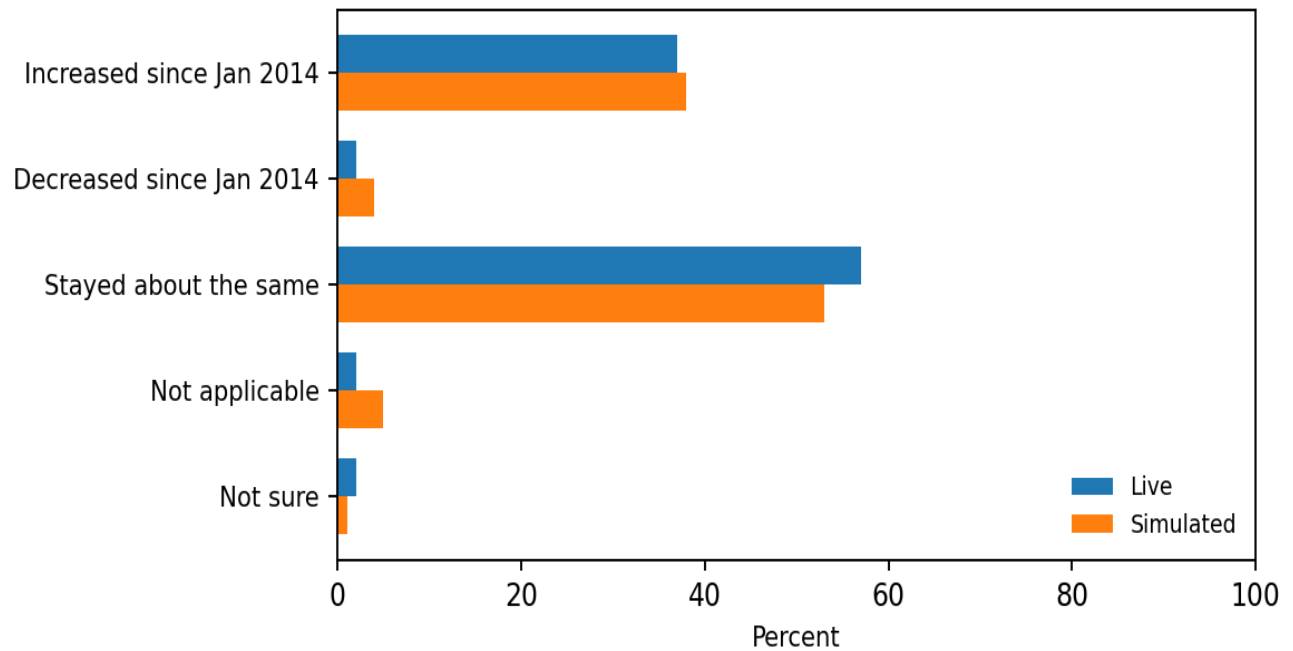


11e

Since January 2014 has the following increased decreased or stayed about the same: The number of patients you see who are chronically ill

KL Divergence (Live ■ Simulated): 0.009

Sample size: Live n=1,624 | Simulated n=1,624

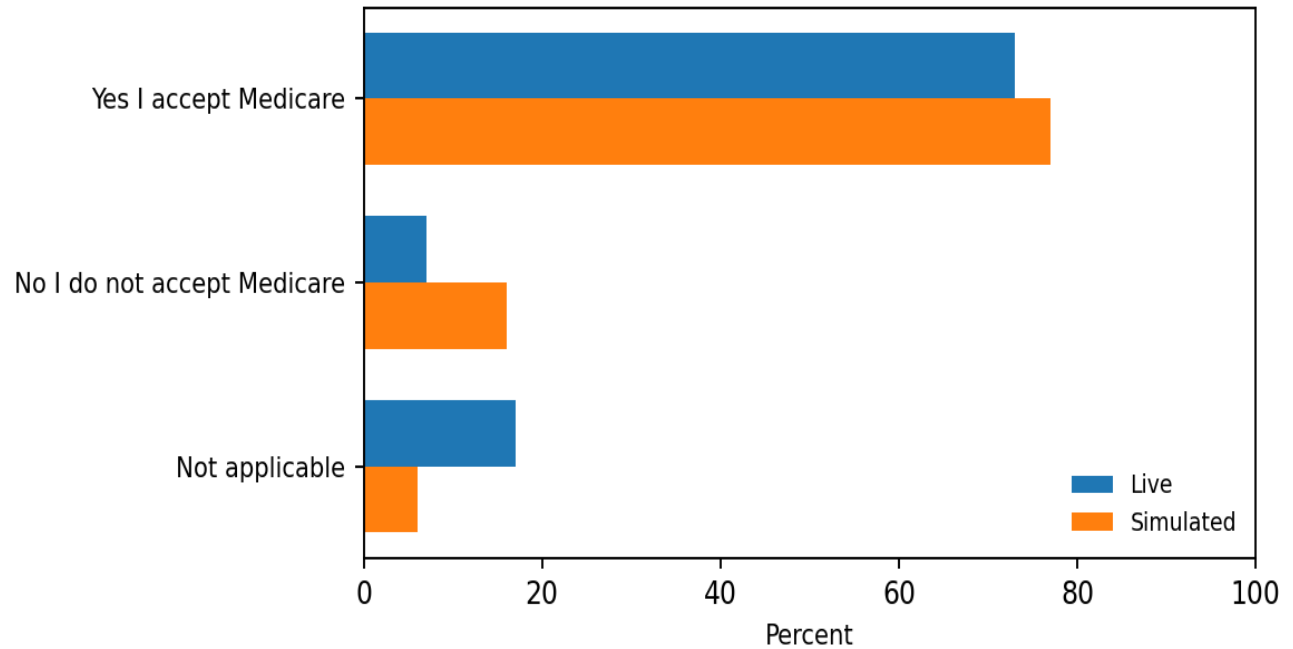


11b

Do you currently accept Medicare?

KL Divergence (Live ■ Simulated): 0.027

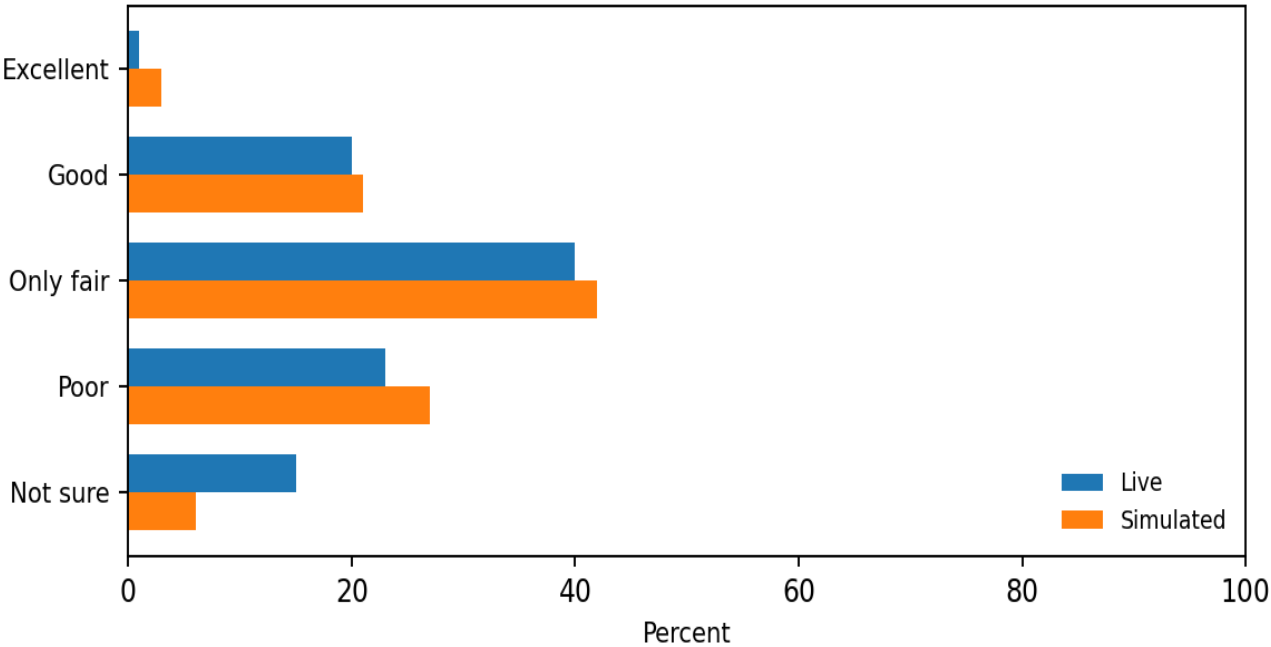
Sample size: Live n=1,624 | Simulated n=1,624



11d_1

In general how would you rate Medicare when it comes to the following: How much you are paid

KL Divergence (Live ■ Simulated): 0.014
Sample size: Live n=1,624 | Simulated n=1,624

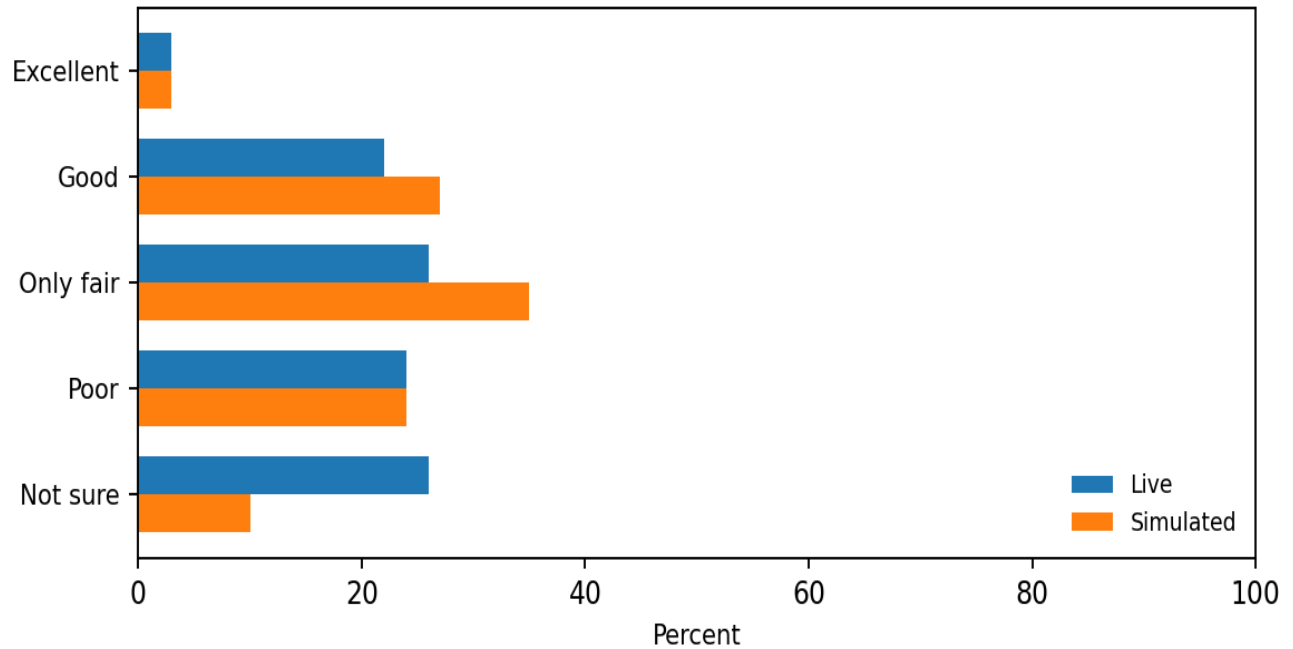


11d_2

In general how would you rate Medicare when it comes to the following: Ease of administration related to reimbursements

KL Divergence (Live ■ Simulated): 0.025

Sample size: Live n=1,624 | Simulated n=1,624

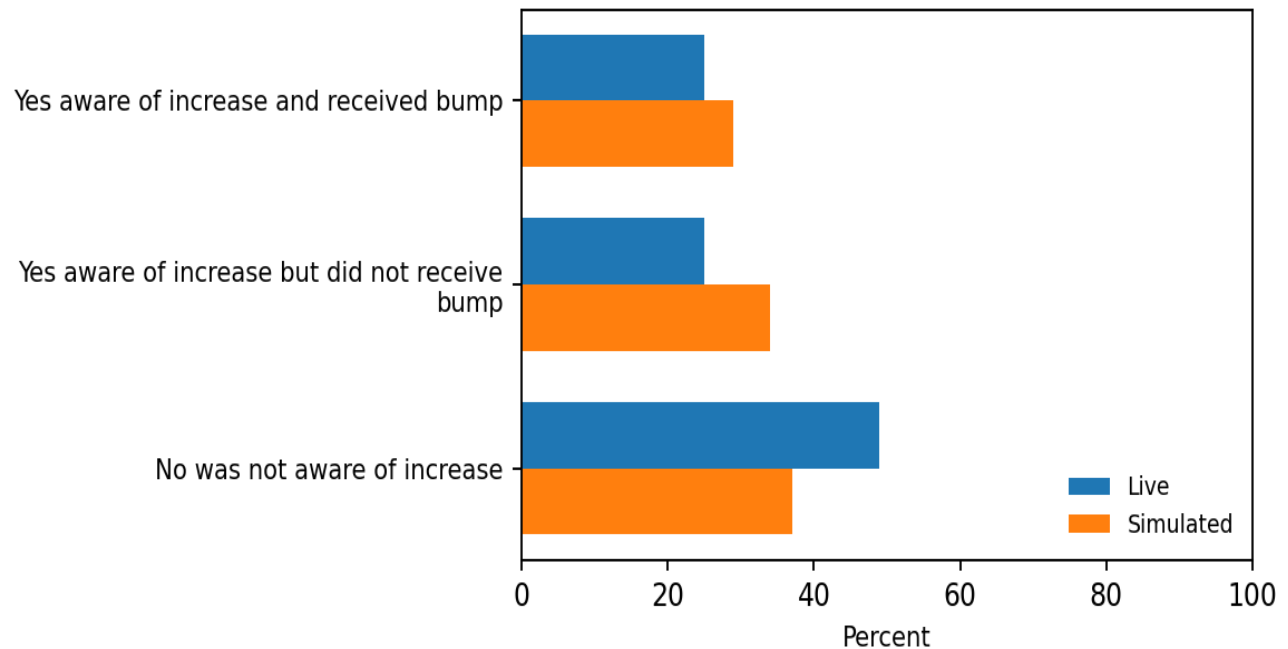


11f

The Affordable Care Act provides a 10% increase in Medicare payments to certain primary care providers from 2011 through 2015. Were you aware of this increase?

KL Divergence (Live ■ Simulated): 0.010

Sample size: Live n=1,624 | Simulated n=1,624

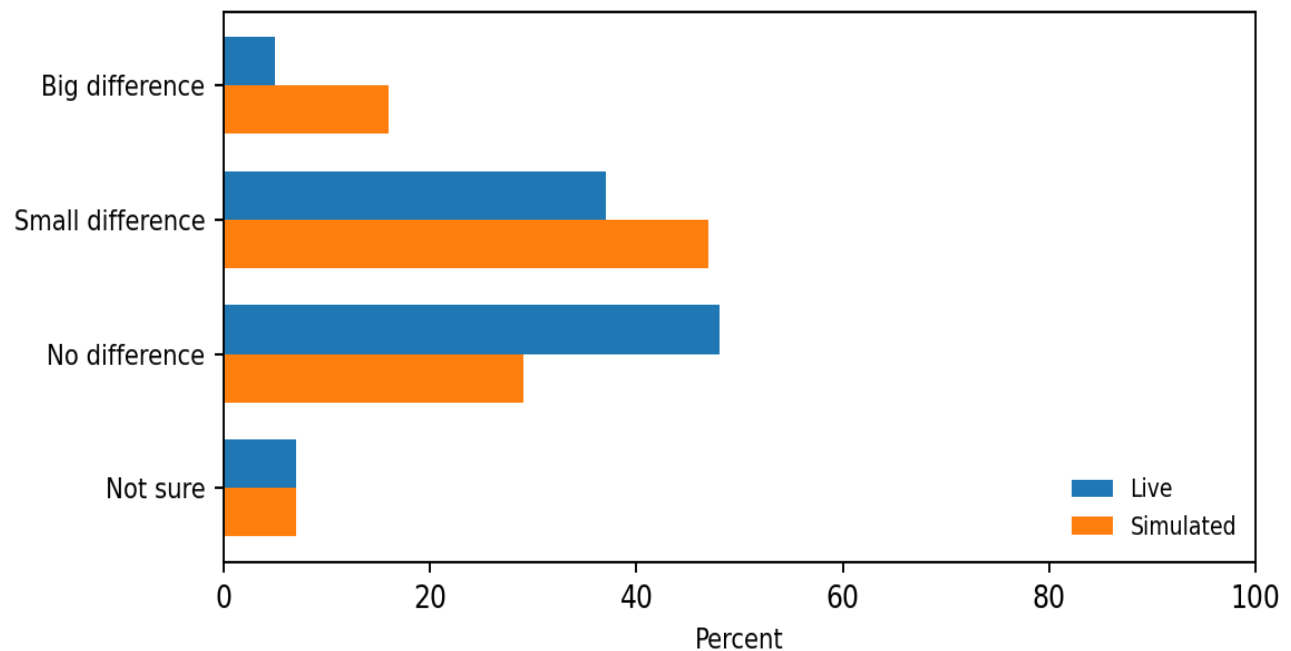


11g

Has this Medicare payment bump made a big difference a small difference or no difference in your ability to serve your Medicare patients?

KL Divergence (Live ■ Simulated): 0.067

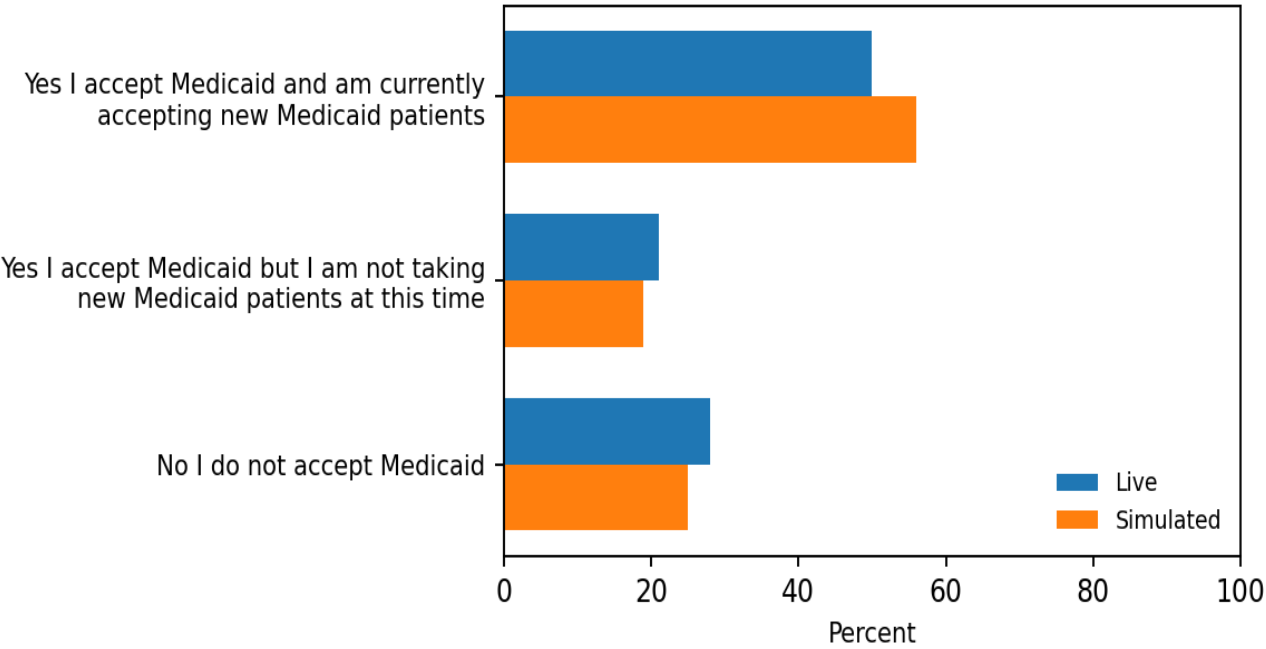
Sample size: Live n=1,624 | Simulated n=1,624



11h

Do you currently accept Medicaid?

KL Divergence (Live ■ Simulated): 0.004
Sample size: Live n=1,624 | Simulated n=1,624

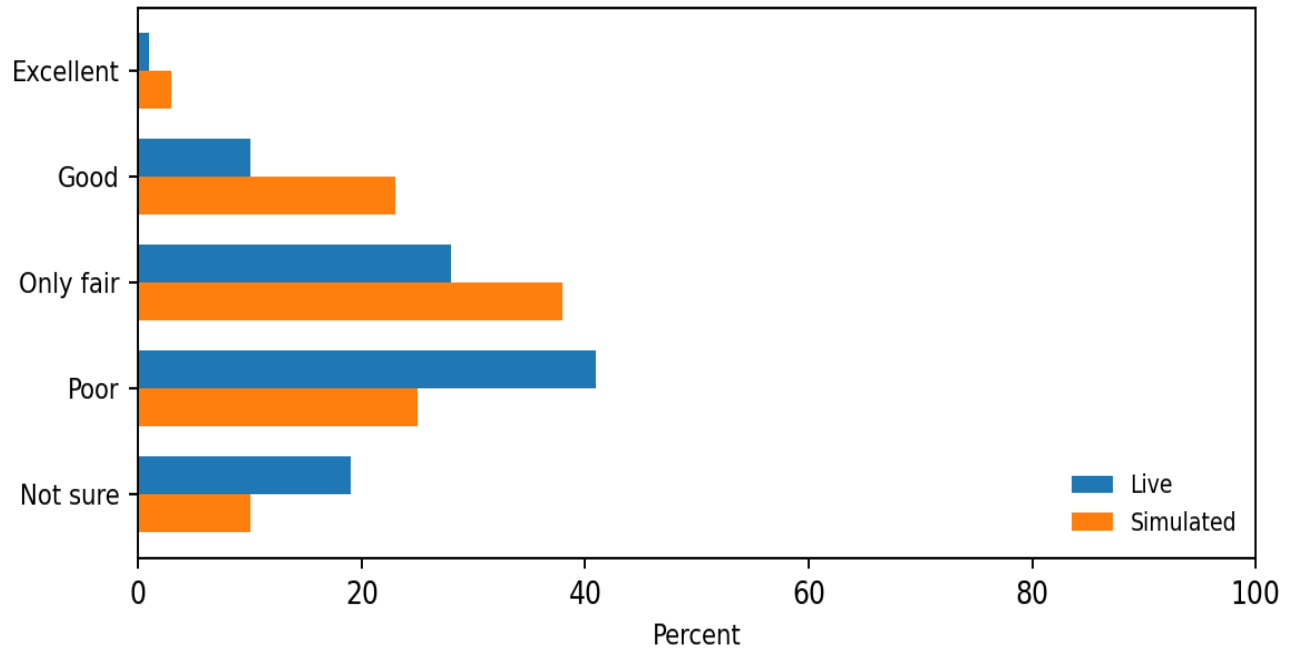


11j_1

In general how would you rate Medicaid when it comes to the following: How much you are paid

KL Divergence (Live ■ Simulated): 0.054

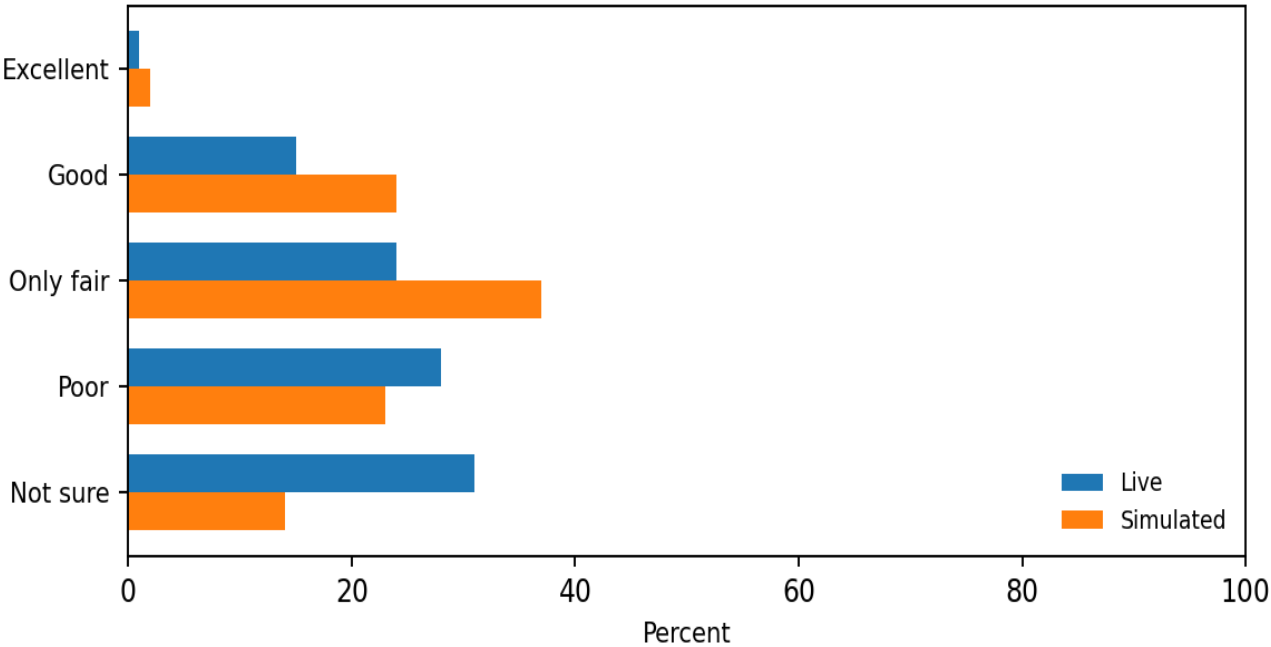
Sample size: Live n=1,624 | Simulated n=1,624



11j_2

In general how would you rate Medicaid when it comes to the following: Ease of administration related to reimbursements

KL Divergence (Live ■ Simulated): 0.041
Sample size: Live n=1,624 | Simulated n=1,624

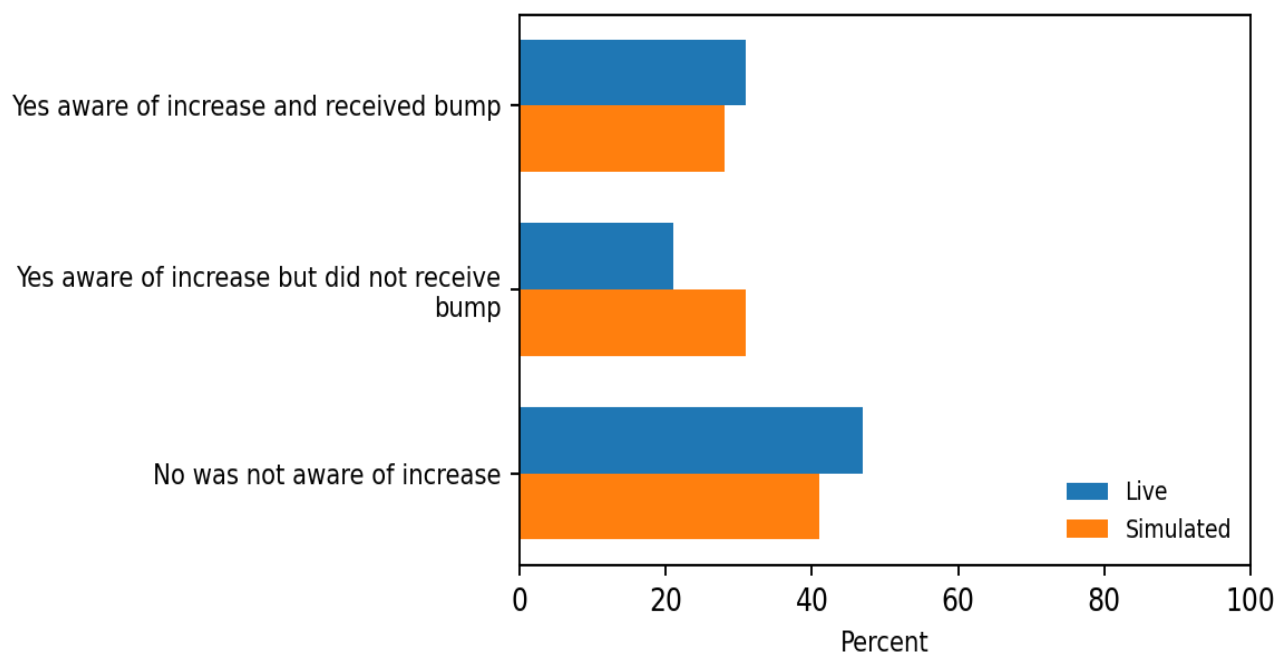


111

Beginning in 2013 the Affordable Care Act temporarily increased Medicaid payments for primary care to match Medicare rates. Were you aware of this increase?

KL Divergence (Live ■ Simulated): 0.006

Sample size: Live n=1,624 | Simulated n=1,624

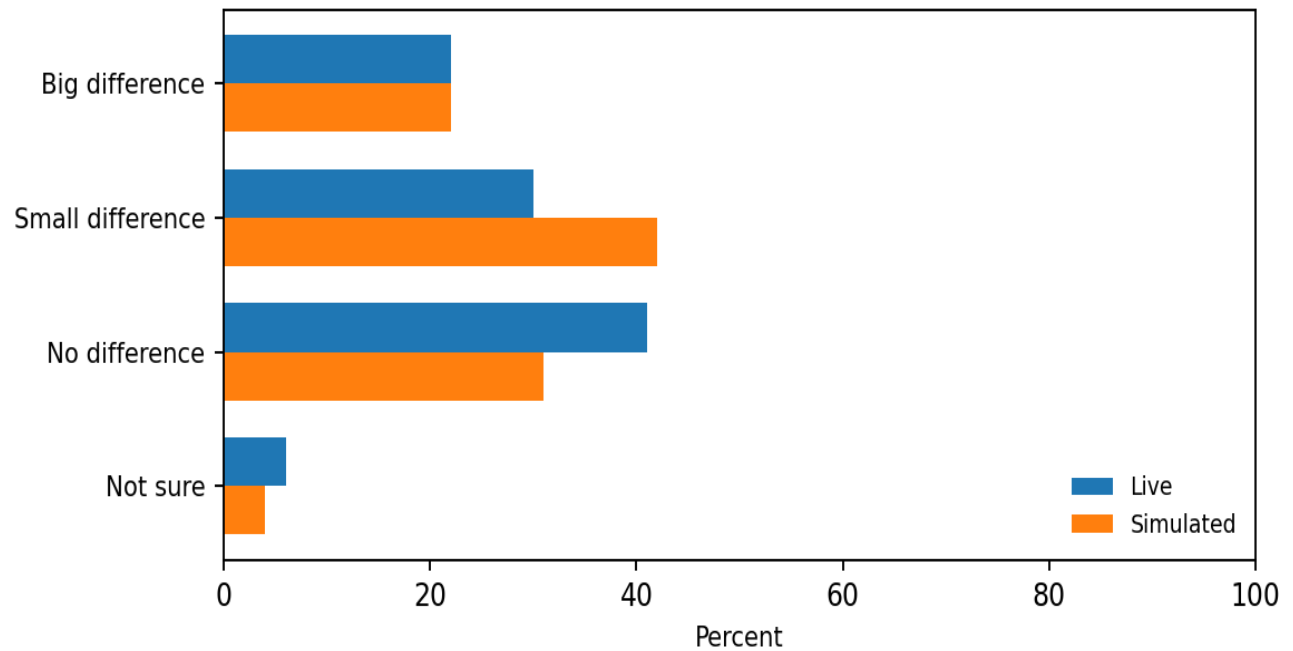


11m

Has this Medicaid payment bump made a big difference a small difference or no difference in your willingness to see Medicaid patients?

KL Divergence (Live ■ Simulated): 0.013

Sample size: Live n=1,624 | Simulated n=1,624

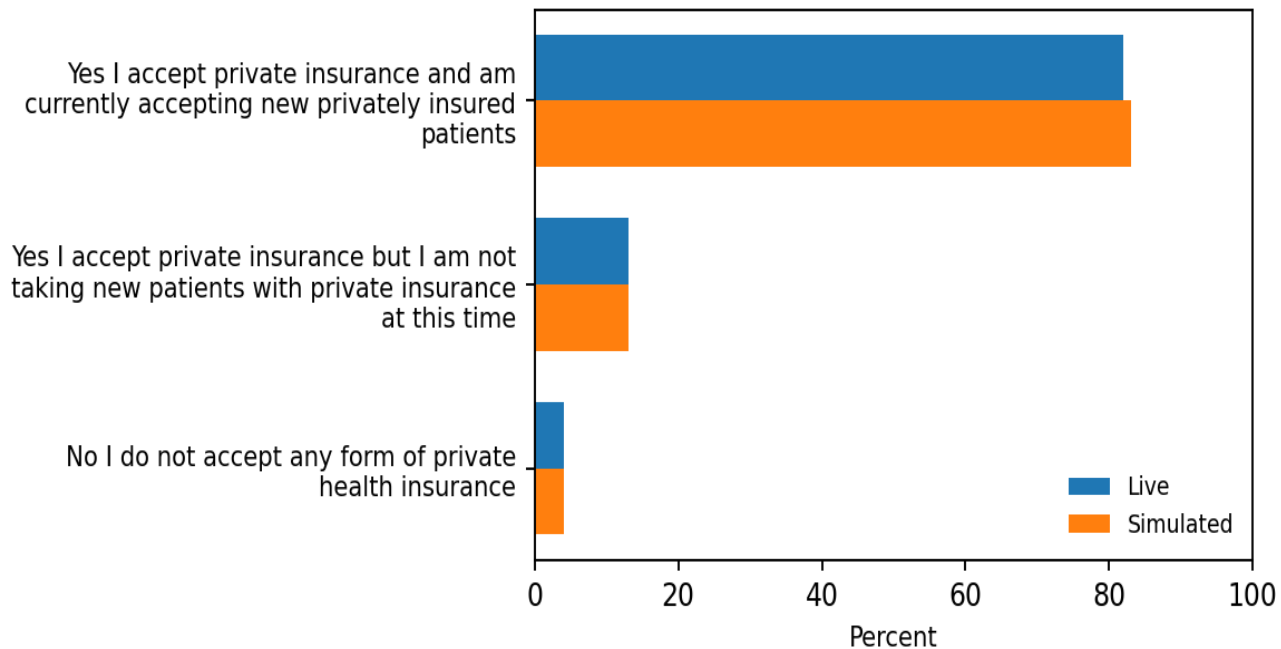


11n

Do you currently accept at least one form of private health insurance?

KL Divergence (Live ■ Simulated): 0.000

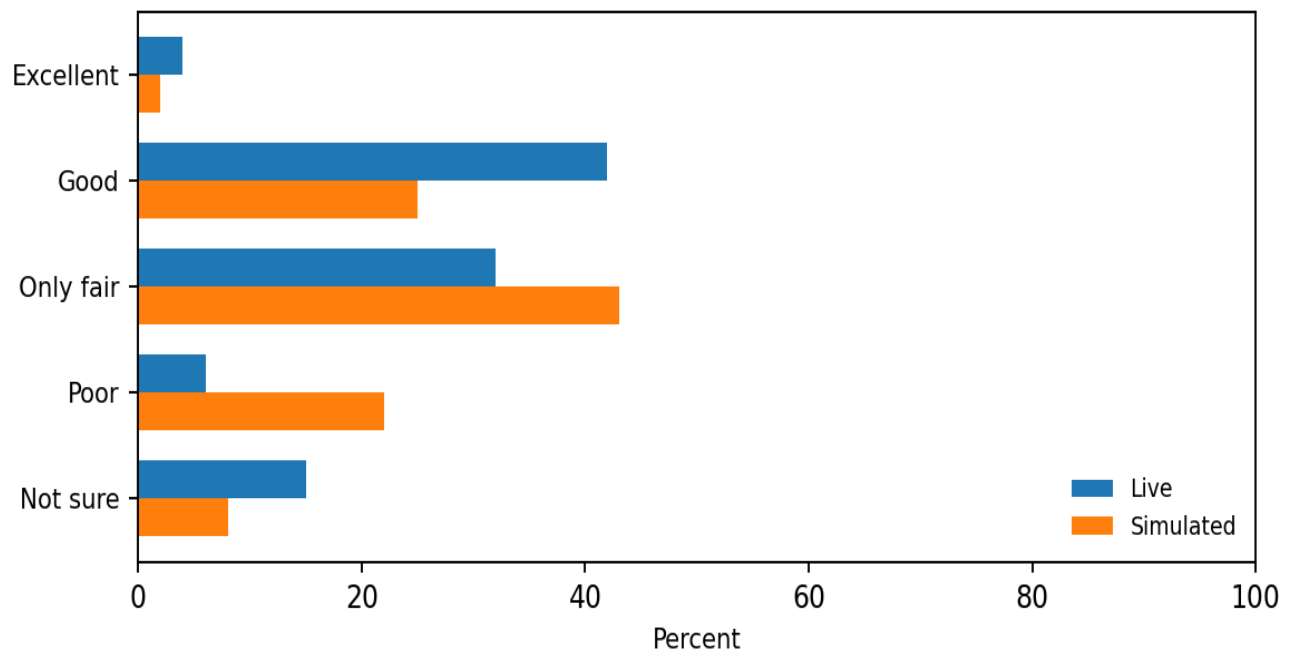
Sample size: Live n=1,624 | Simulated n=1,624



11o_1

In general how would you rate private health insurers when it comes to the following: How much you are paid

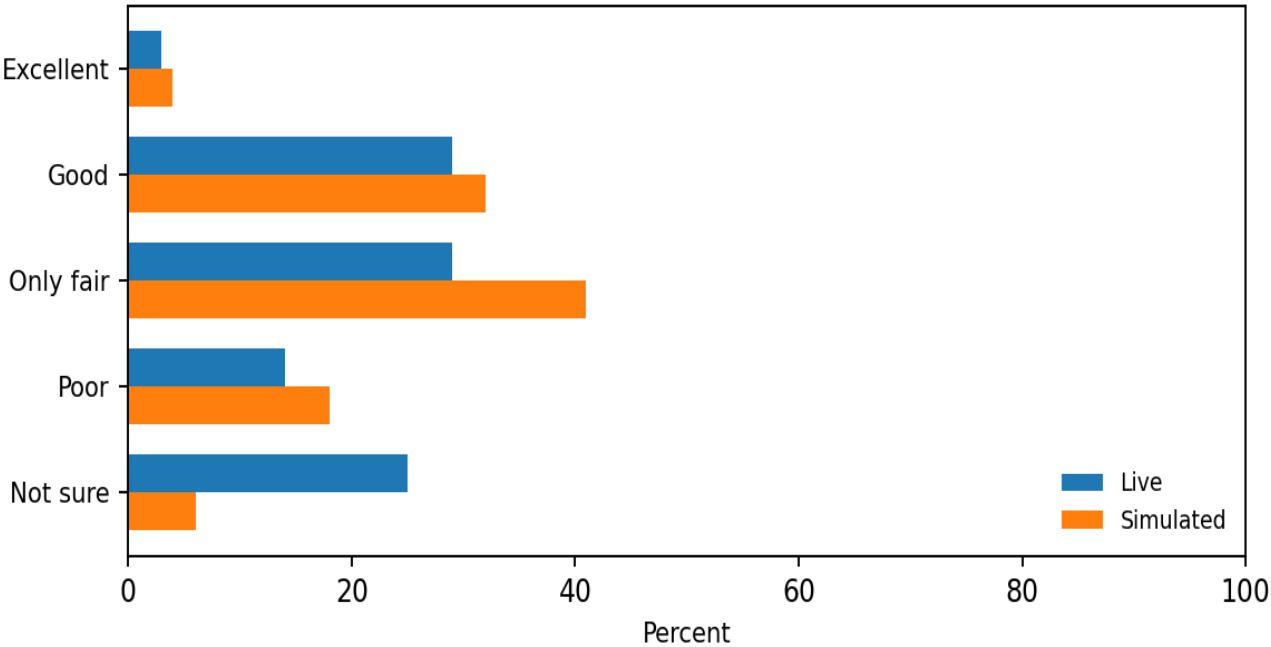
KL Divergence (Live ■ Simulated): 0.056
Sample size: Live n=1,624 | Simulated n=1,624



11o_2

In general how would you rate private health insurers when it comes to the following: Ease of administration related to reimbursements

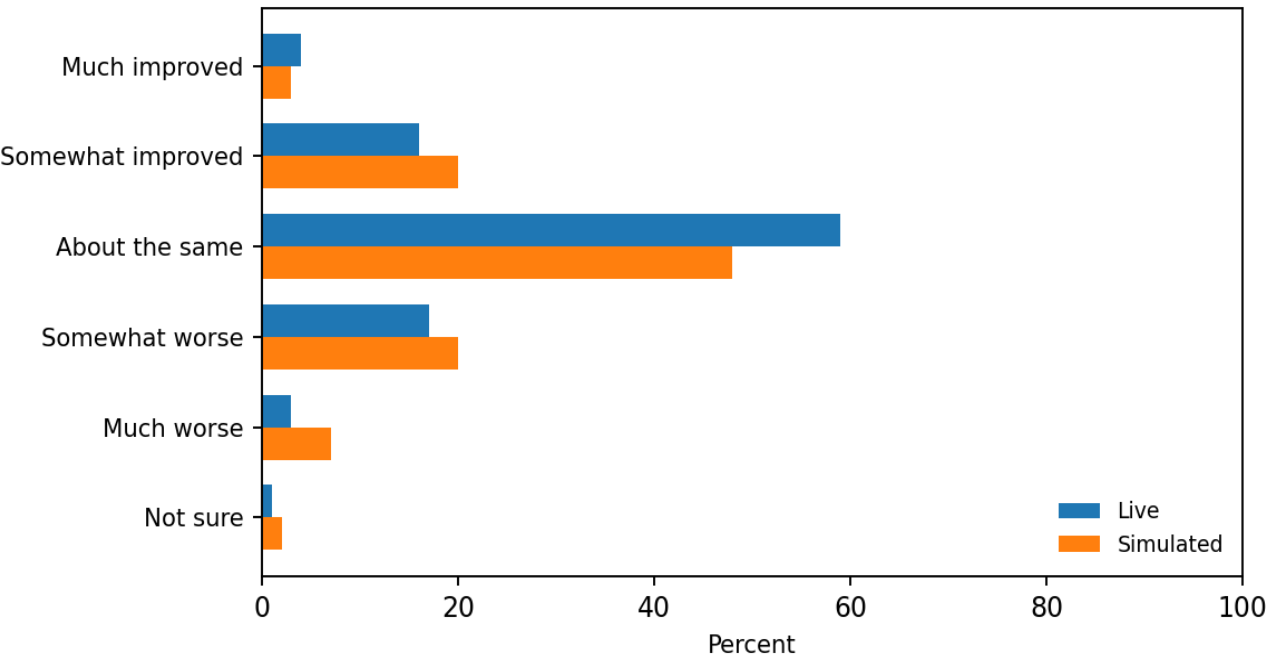
KL Divergence (Live ■ Simulated): 0.032
Sample size: Live n=1,624 | Simulated n=1,624



12a_1

How if at all has the following changed in your practice since January 2014: Your ability to provide high quality care to all your patients

KL Divergence (Live ■ Simulated): 0.014
Sample size: Live n=1,624 | Simulated n=1,624

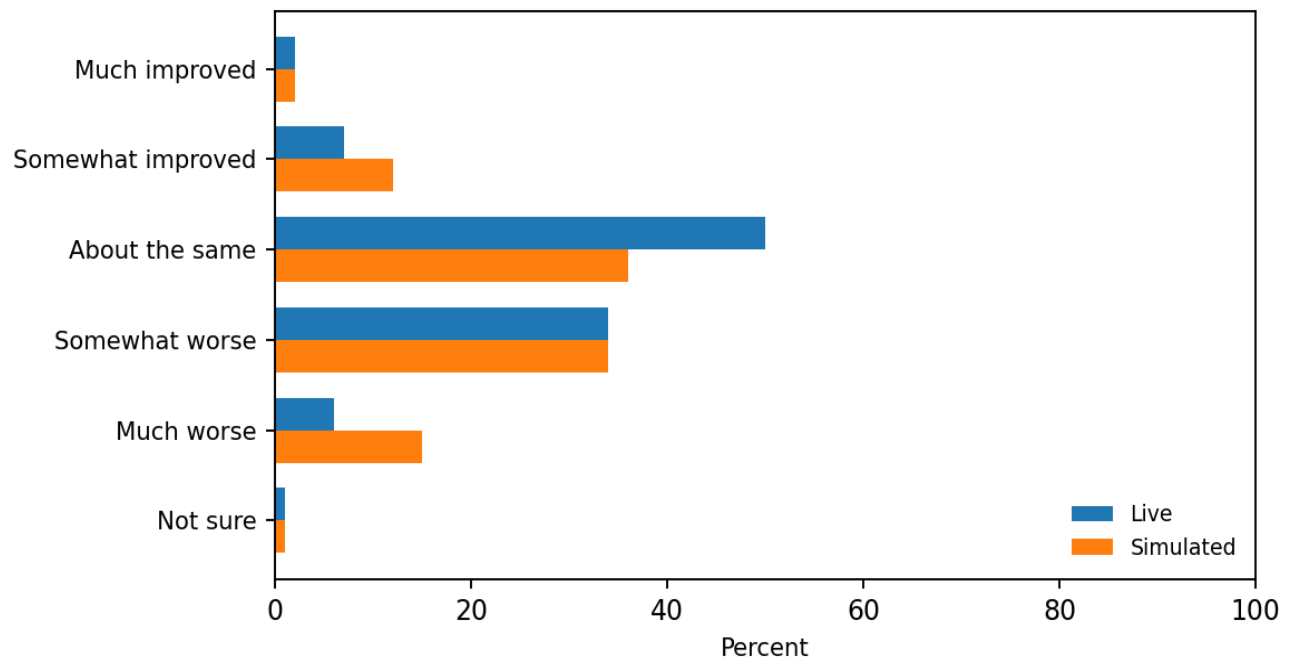


12a_2

How if at all has the following changed in your practice since January 2014: The amount of time you have available to spend with each patient

KL Divergence (Live ■ Simulated): 0.034

Sample size: Live n=1,624 | Simulated n=1,624

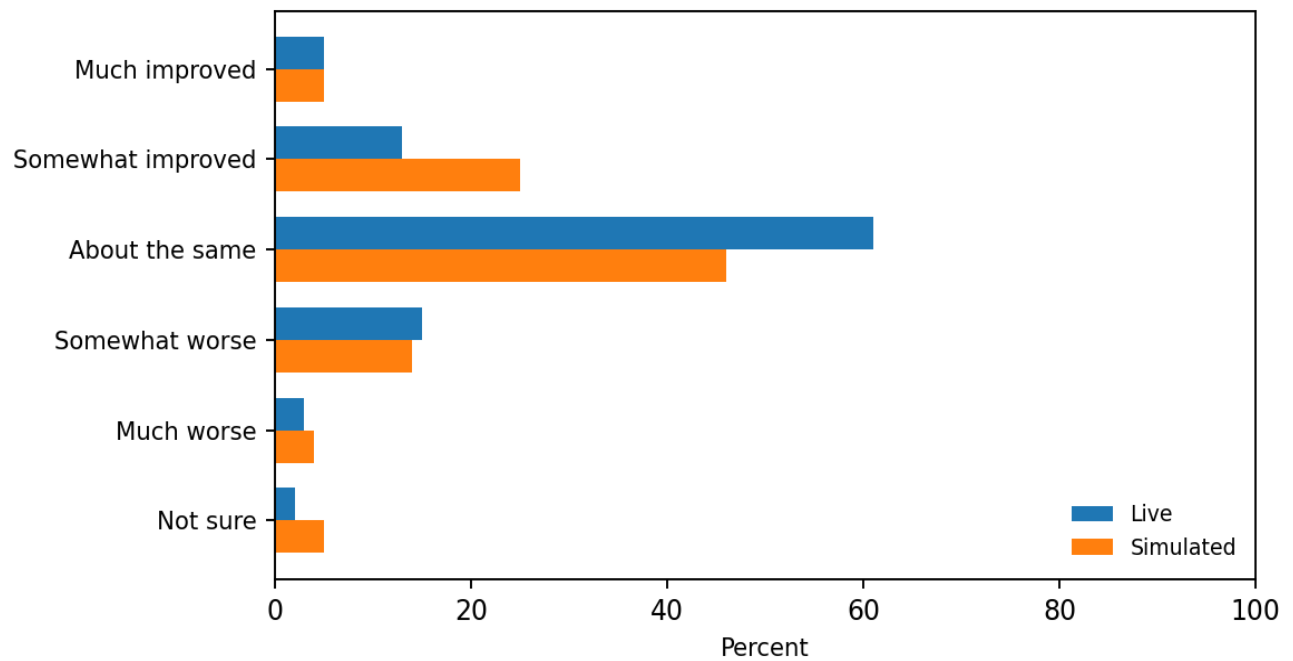


12a_3

How if at all has the following changed in your practice since January 2014: Patient satisfaction and experiences with care

KL Divergence (Live ■ Simulated): 0.026

Sample size: Live n=1,624 | Simulated n=1,624

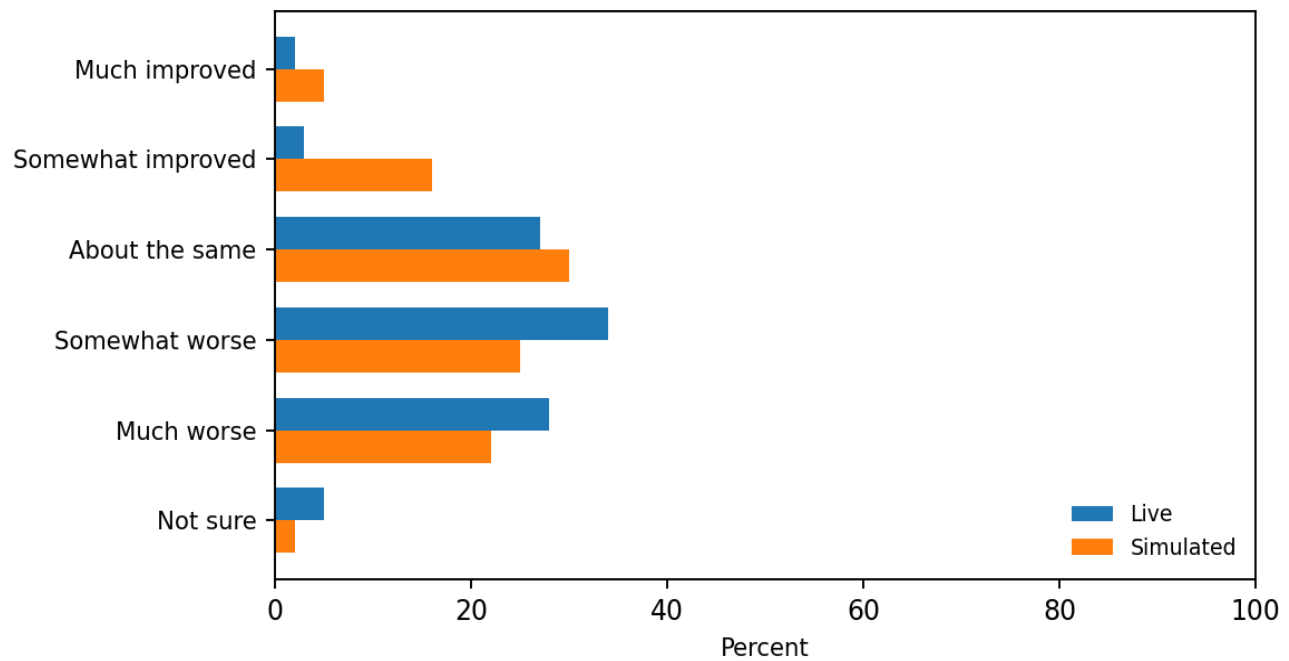


12a_4

How if at all has the following changed in your practice since January 2014: Amount of time spent on administrative issues related to insurance

KL Divergence (Live ■ Simulated): 0.026

Sample size: Live n=1,624 | Simulated n=1,624

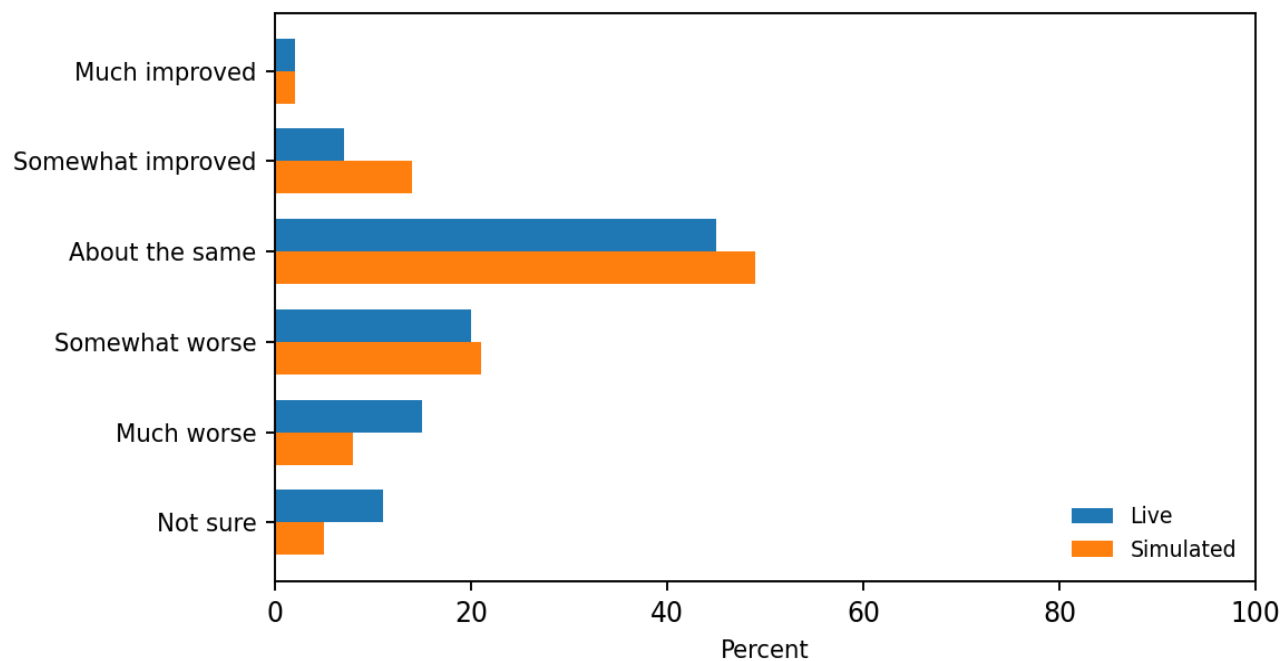


12a_5

How if at all has the following changed in your practice since January 2014: Your practice's ability to recruit and retain clinical staff including physicians nurse practitioners and physician assistants

KL Divergence (Live ■ Simulated): 0.011

Sample size: Live n=1,624 | Simulated n=1,624

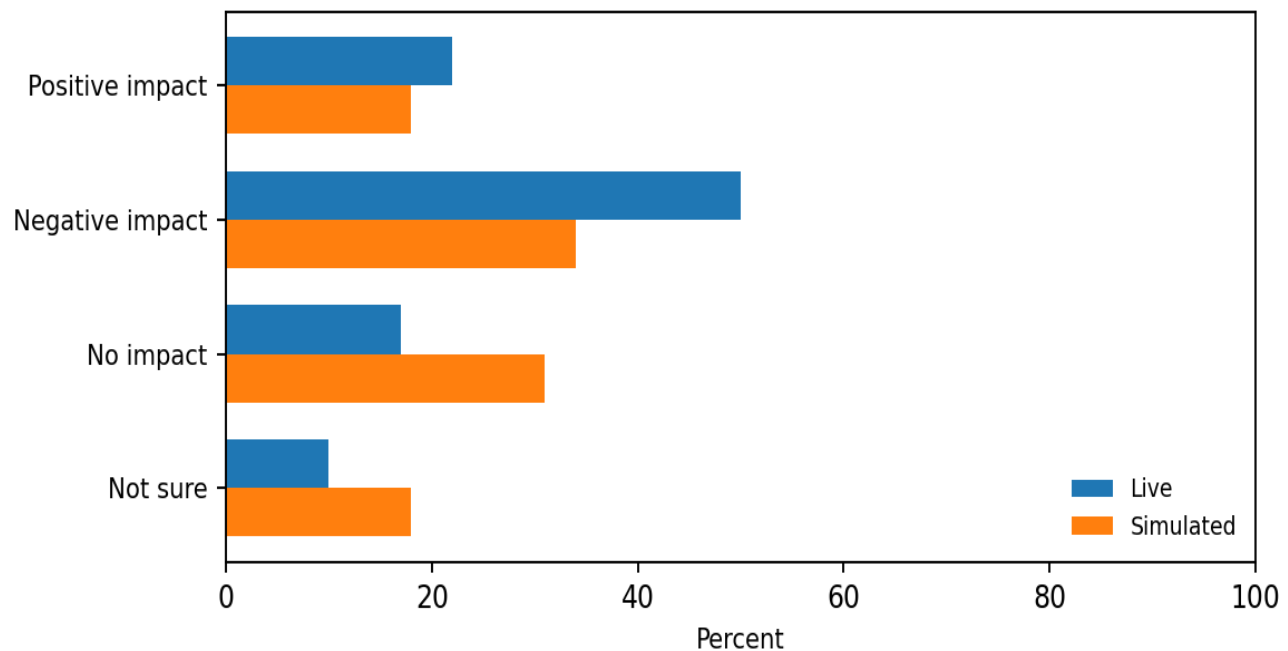


25a

Do you think the following is having a positive negative or no impact on primary care providers' ability to provide quality care to their patients: Increased use of quality metrics to assess provider performance

KL Divergence (Live ■ Simulated): 0.040

Sample size: Live n=1,624 | Simulated n=1,624

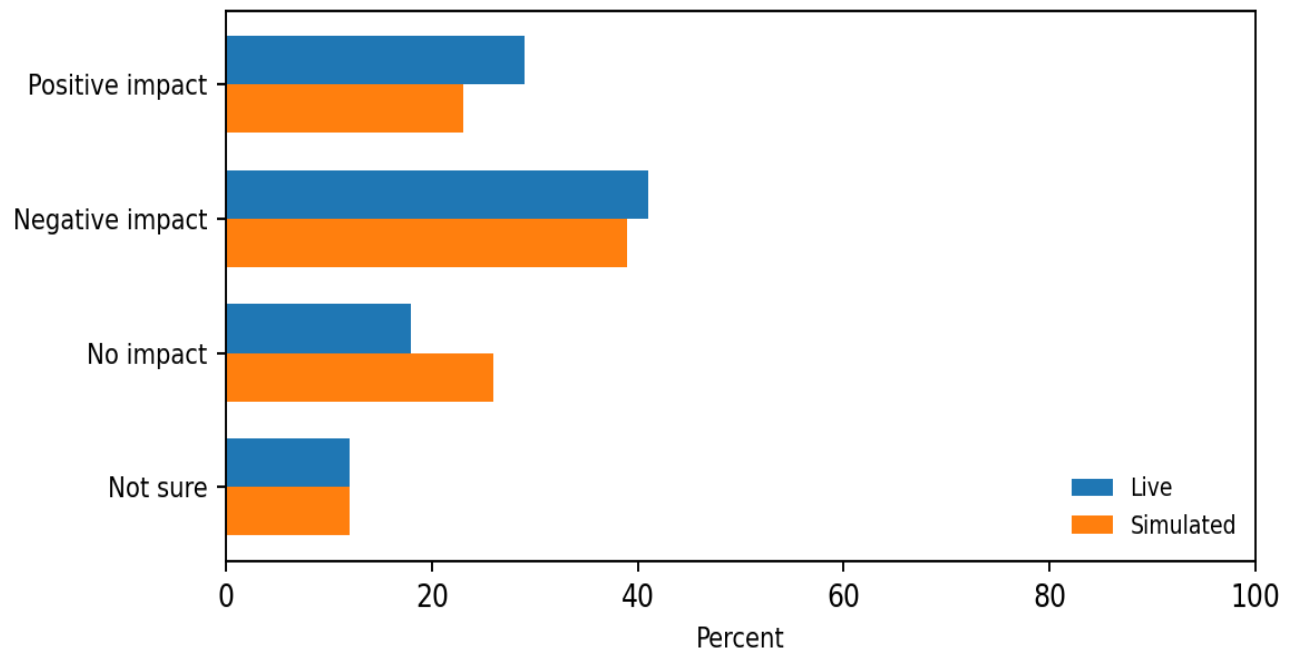


25b

Do you think the following is having a positive negative or no impact on primary care providers' ability to provide quality care to their patients: Increased reliance on non-physician clinicians such as nurse practitioners and physician assistants

KL Divergence (Live ■ Simulated): 0.009

Sample size: Live n=1,624 | Simulated n=1,624

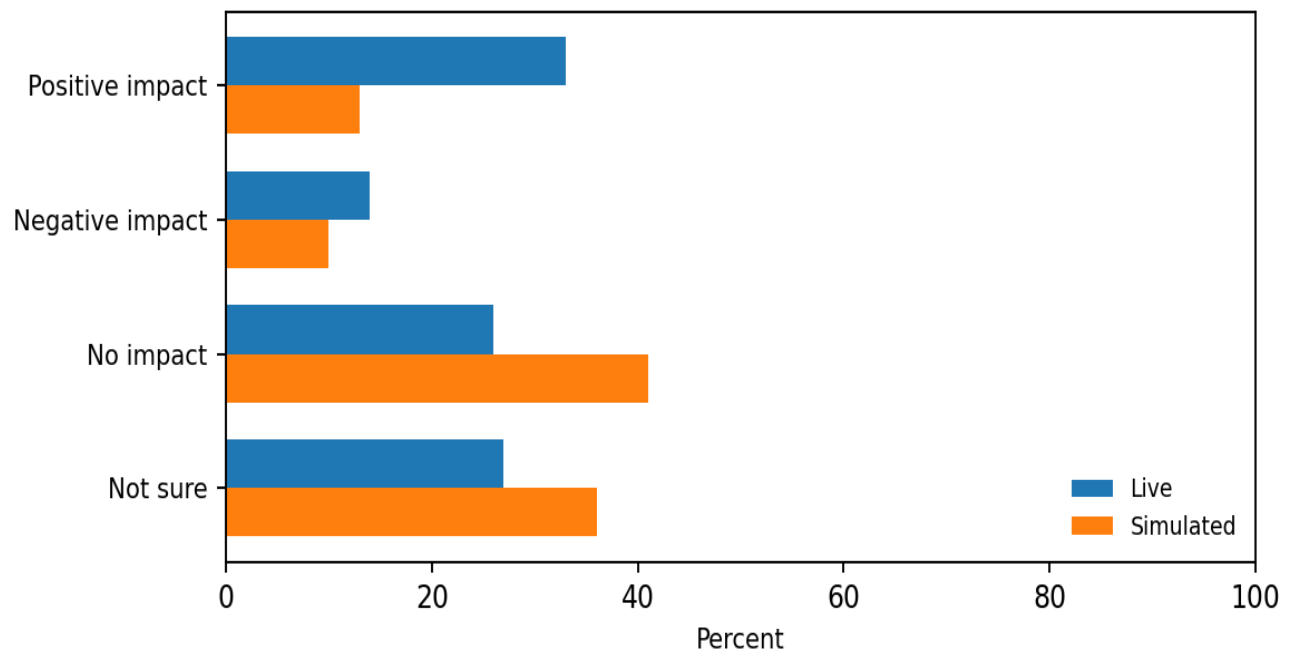


25c

Do you think the following is having a positive negative or no impact on primary care providers' ability to provide quality care to their patients: Increased use of medical homes

KL Divergence (Live ■ Simulated): 0.056

Sample size: Live n=1,624 | Simulated n=1,624

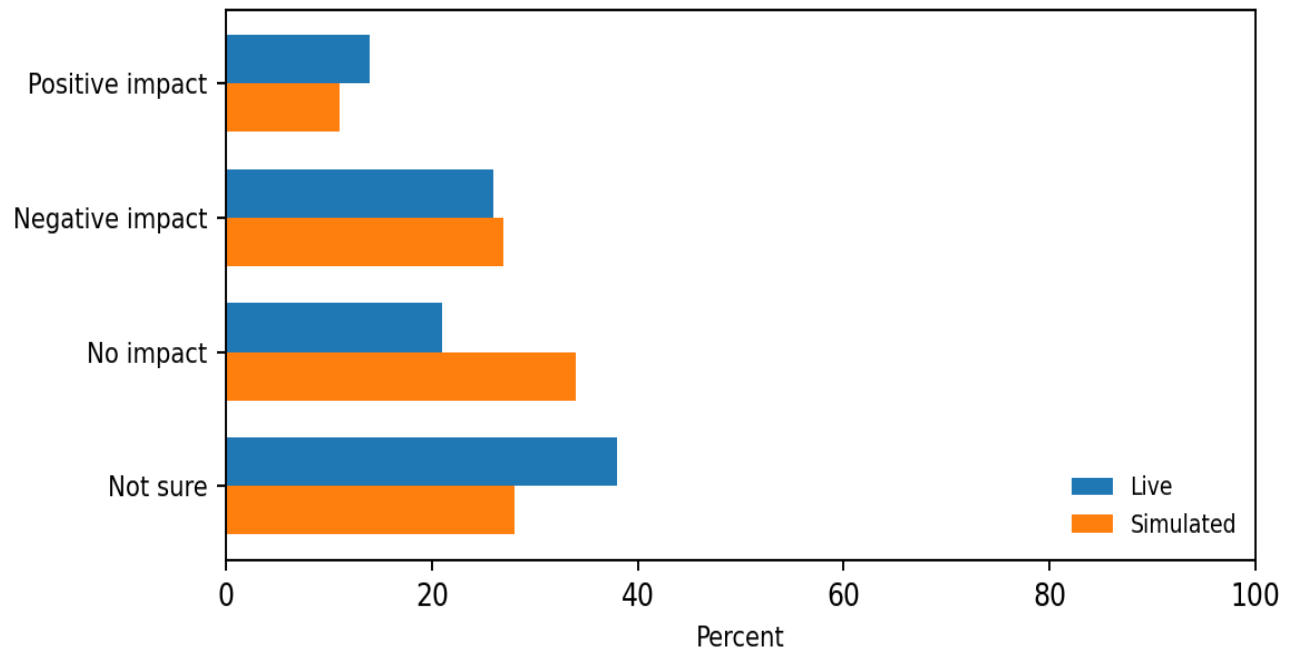


25d

Do you think the following is having a positive negative or no impact on primary care providers' ability to provide quality care to their patients: Increased use of Accountable Care Organizations (ACOs)

KL Divergence (Live ■ Simulated): 0.025

Sample size: Live n=1,624 | Simulated n=1,624

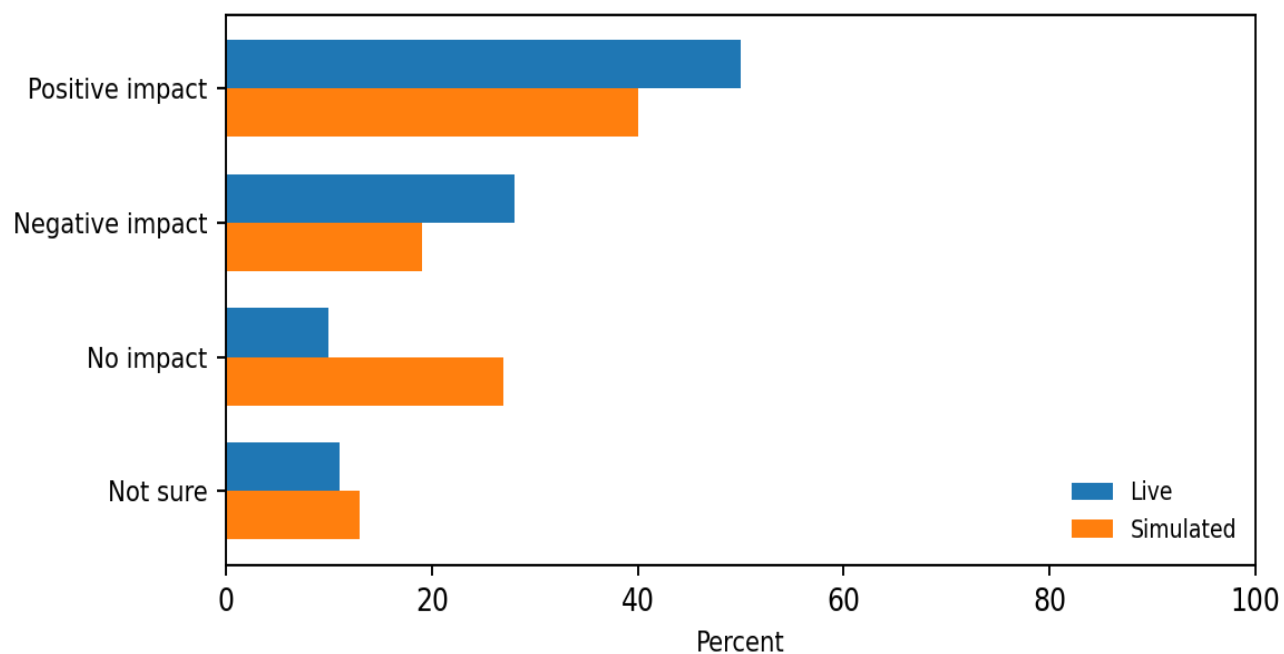


25e

Do you think the following is having a positive negative or no impact on primary care providers' ability to provide quality care to their patients: Increased use of health information technology

KL Divergence (Live ■ Simulated): 0.035

Sample size: Live n=1,624 | Simulated n=1,624

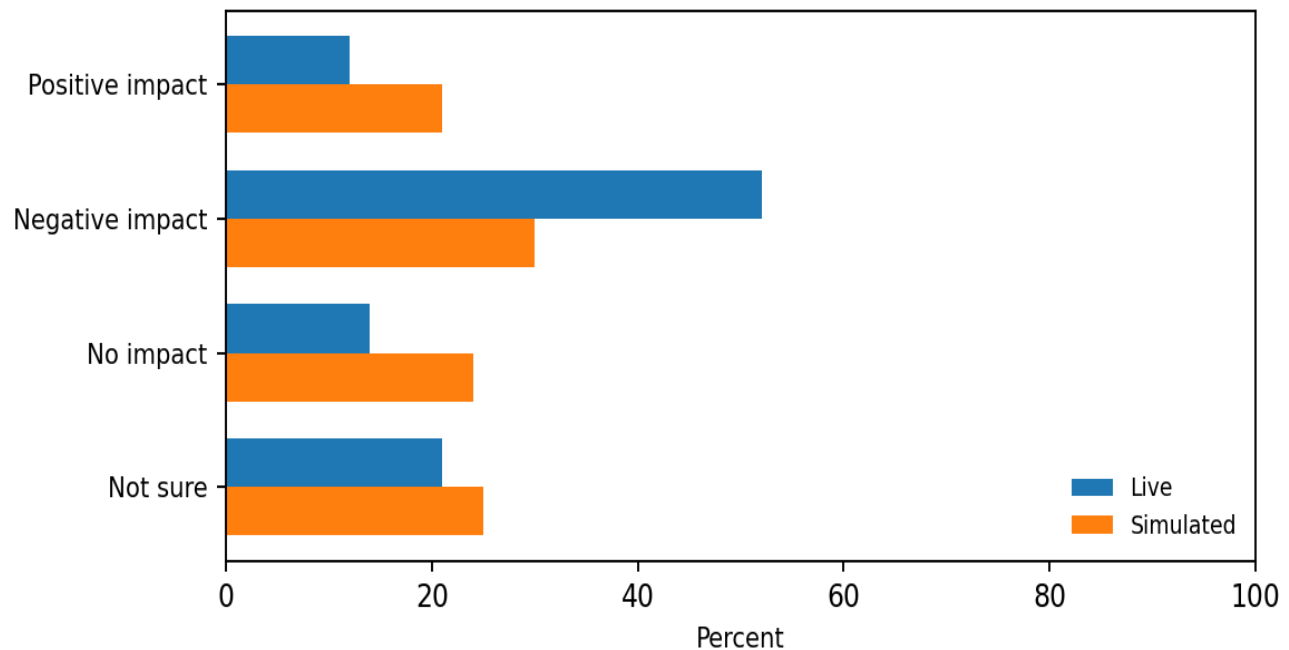


25f

Do you think the following is having a positive negative or no impact on primary care providers' ability to provide quality care to their patients: Programs that include financial penalties for unnecessary hospital admissions or readmissions

KL Divergence (Live ■ Simulated): 0.029

Sample size: Live n=1,624 | Simulated n=1,624

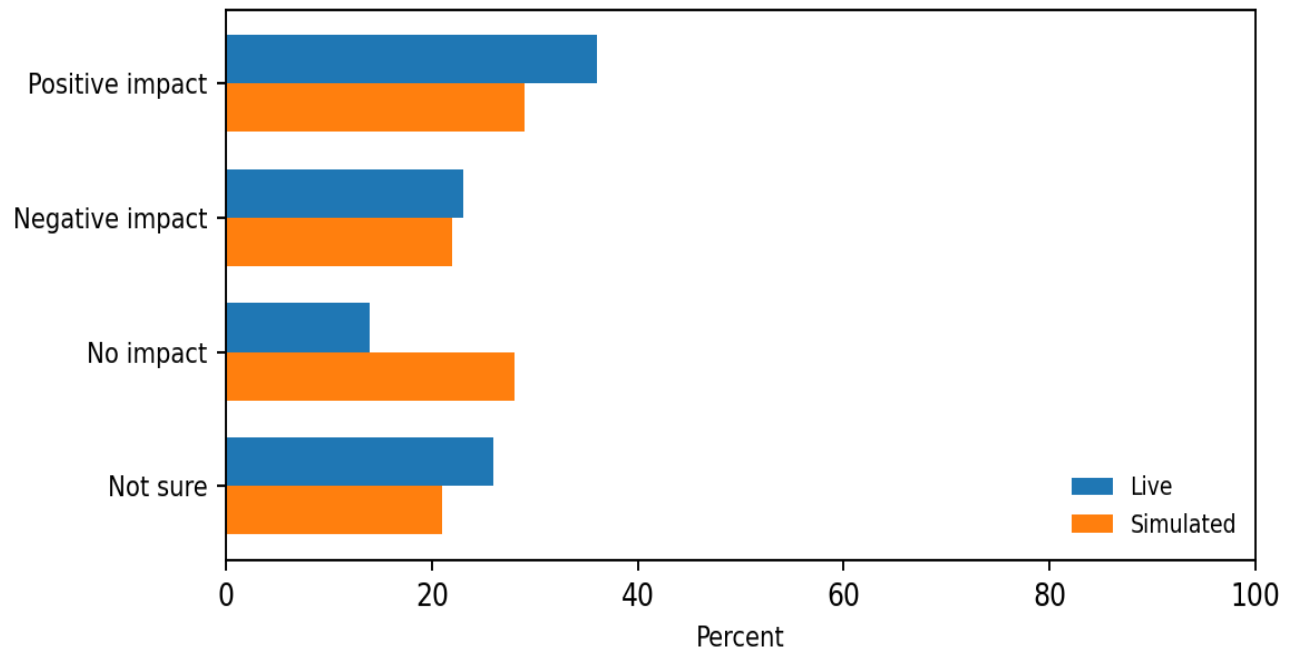


25h

Do you think the following is having a positive negative or no impact on primary care providers' ability to provide quality care to their patients: The expansion of Medicaid under the Affordable Care Act

KL Divergence (Live ■ Simulated): 0.017

Sample size: Live n=1,624 | Simulated n=1,624

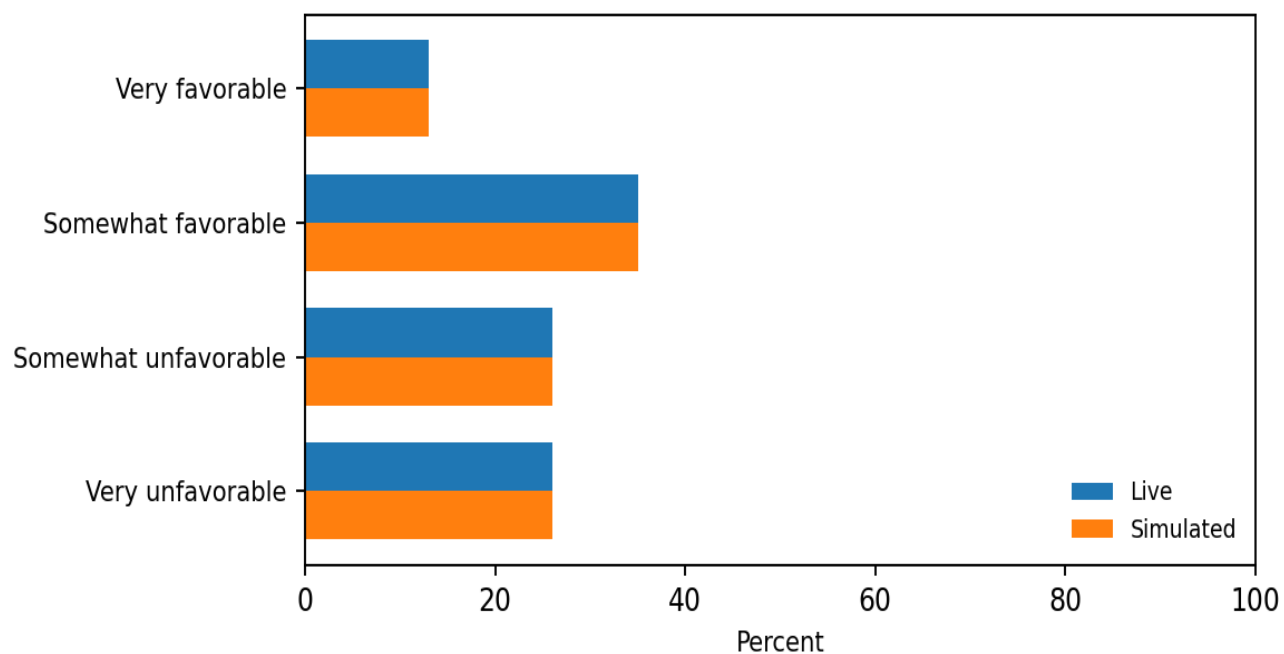


26

Overall what is your opinion of the health care law that was passed in 2010 also known as the Affordable Care Act (ACA) or Obamacare?

KL Divergence (Live ■ Simulated): 0.000

Sample size: Live n=1,624 | Simulated n=1,624

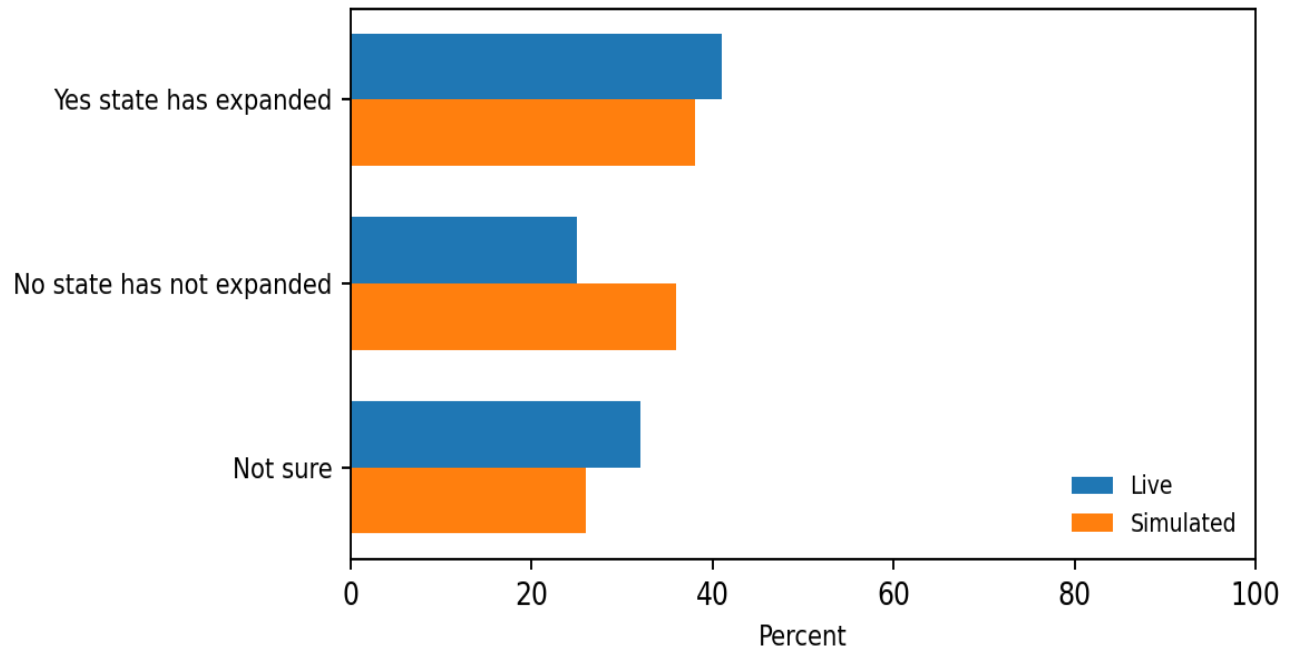


28

As you may know the Affordable Care Act gives states the option of expanding their Medicaid program to cover more low-income uninsured adults. As far as you know has your state expanded its Medicaid program or not?

KL Divergence (Live ■ Simulated): 0.007

Sample size: Live n=1,624 | Simulated n=1,624

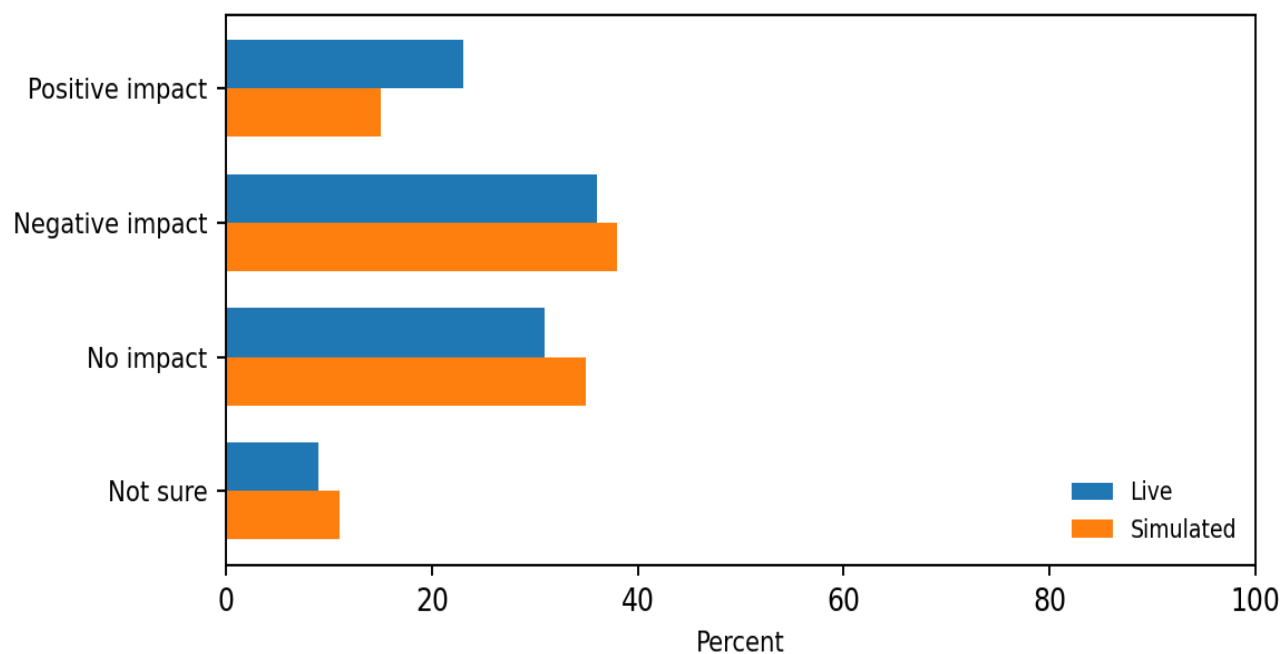


29a

Do you think the Affordable Care Act has had a positive negative or no impact on the following: Your medical practice overall

KL Divergence (Live ■ Simulated): 0.008

Sample size: Live n=1,624 | Simulated n=1,624

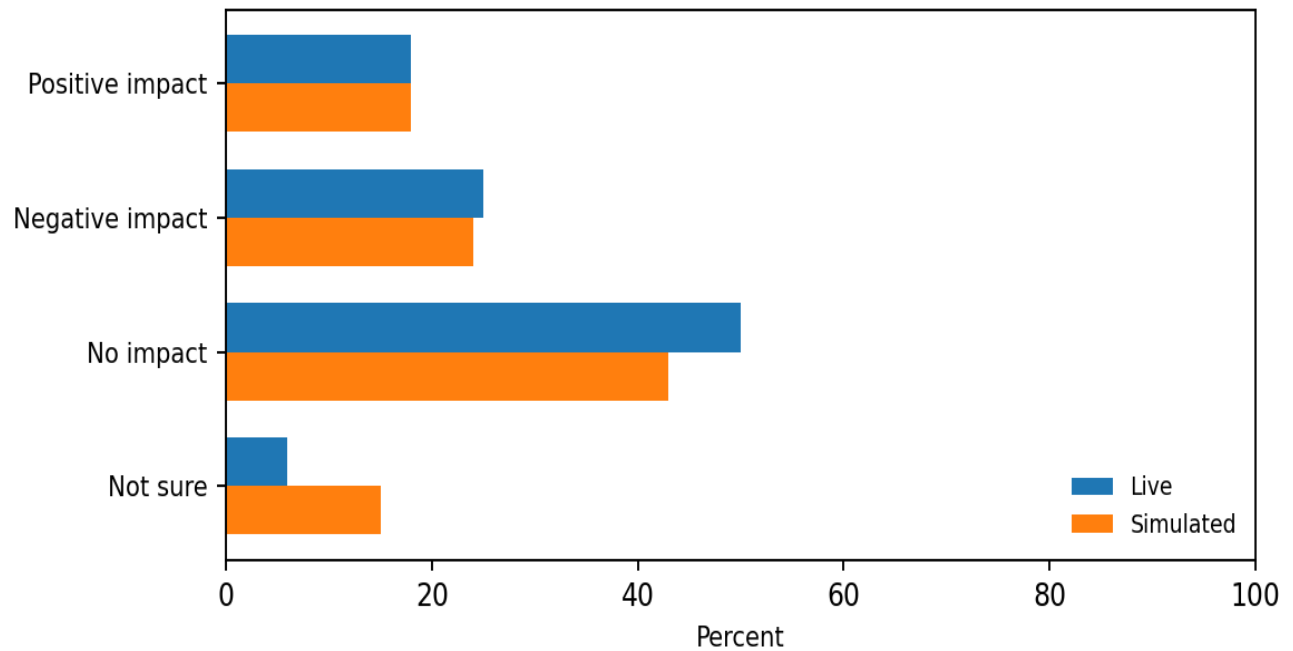


29b

Do you think the Affordable Care Act has had a positive negative or no impact on the following: The quality of care your patients receive

KL Divergence (Live ■ Simulated): 0.013

Sample size: Live n=1,624 | Simulated n=1,624

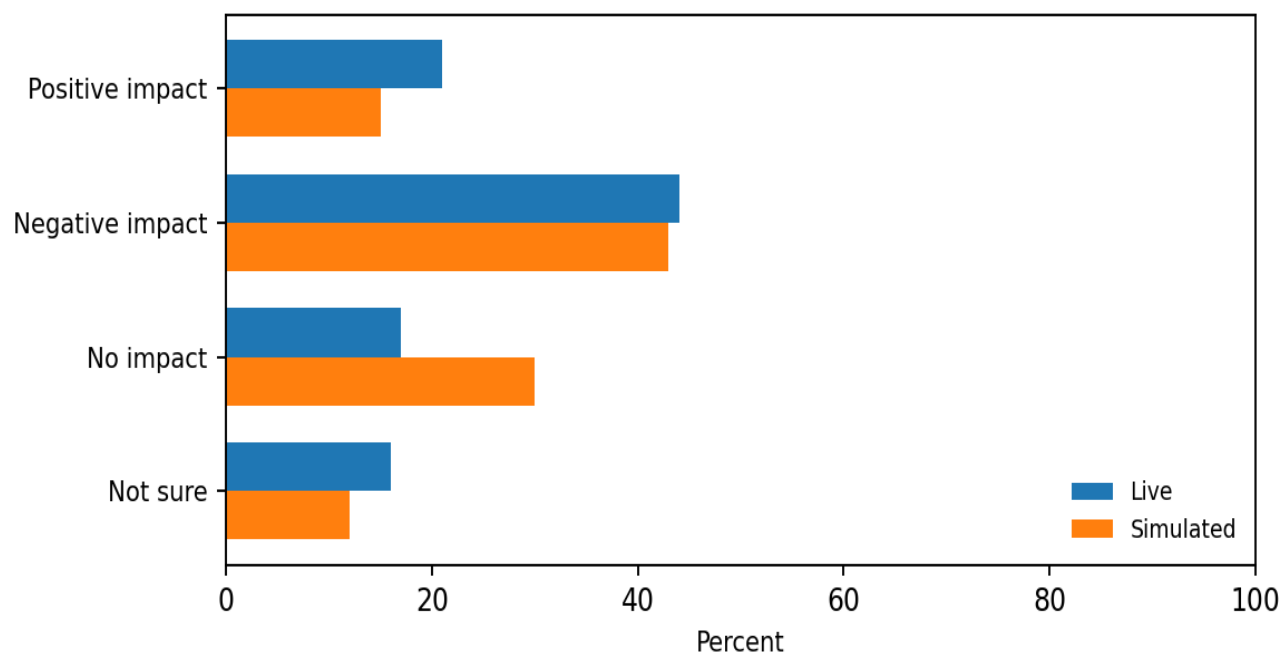


29c

Do you think the Affordable Care Act has had a positive negative or no impact on the following: The cost of health care for your patients

KL Divergence (Live ■ Simulated): 0.022

Sample size: Live n=1,624 | Simulated n=1,624

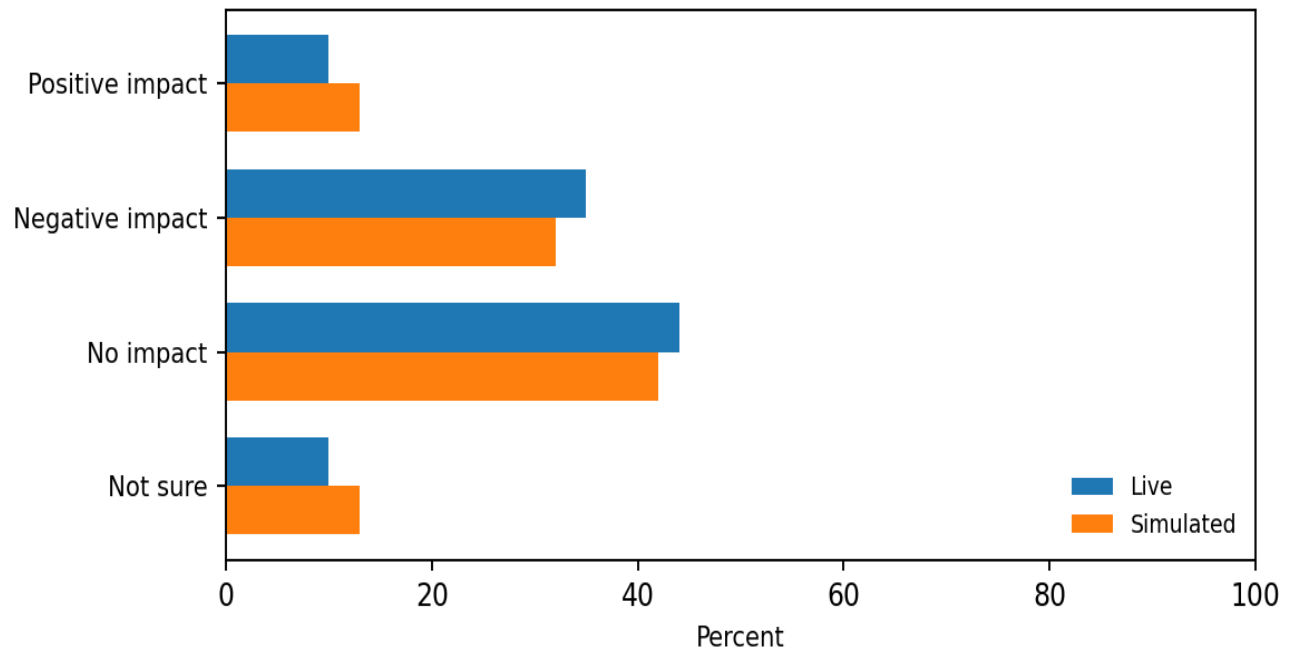


29d

Do you think the Affordable Care Act has had a positive negative or no impact on the following: The ability of your practice to meet patient demand

KL Divergence (Live ■ Simulated): 0.003

Sample size: Live n=1,624 | Simulated n=1,624

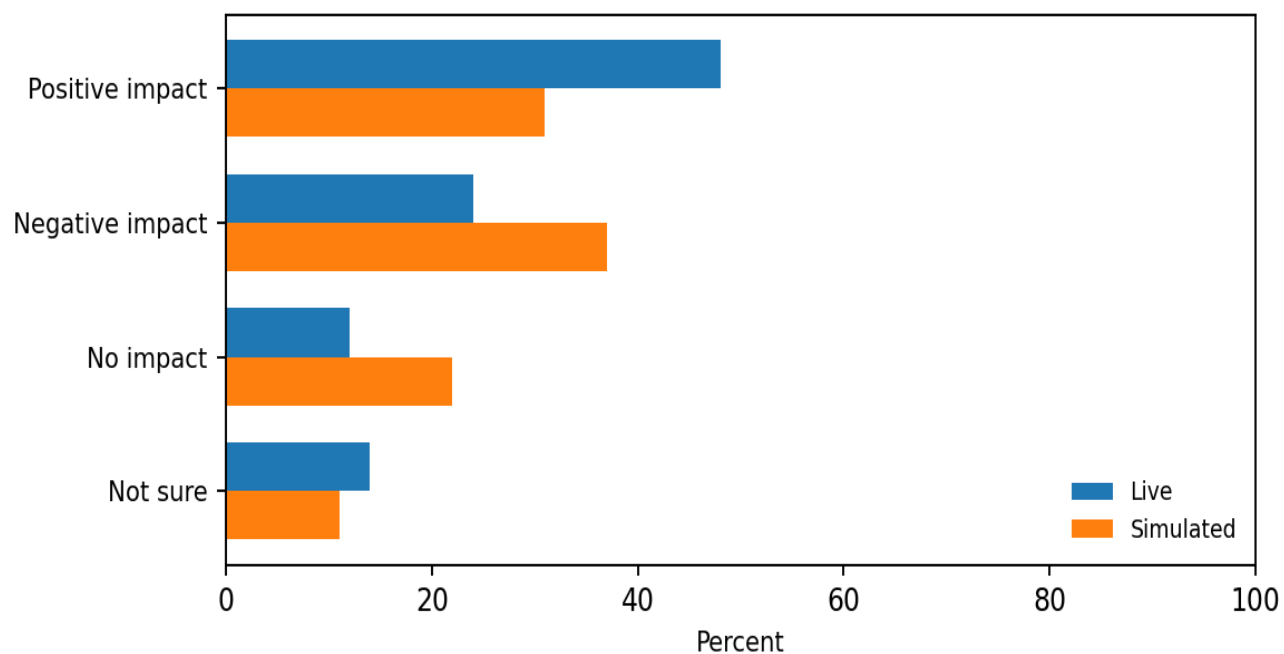


29e

Do you think the Affordable Care Act has had a positive negative or no impact on the following: Access to health care and insurance in the country overall

KL Divergence (Live ■ Simulated): 0.036

Sample size: Live n=1,624 | Simulated n=1,624

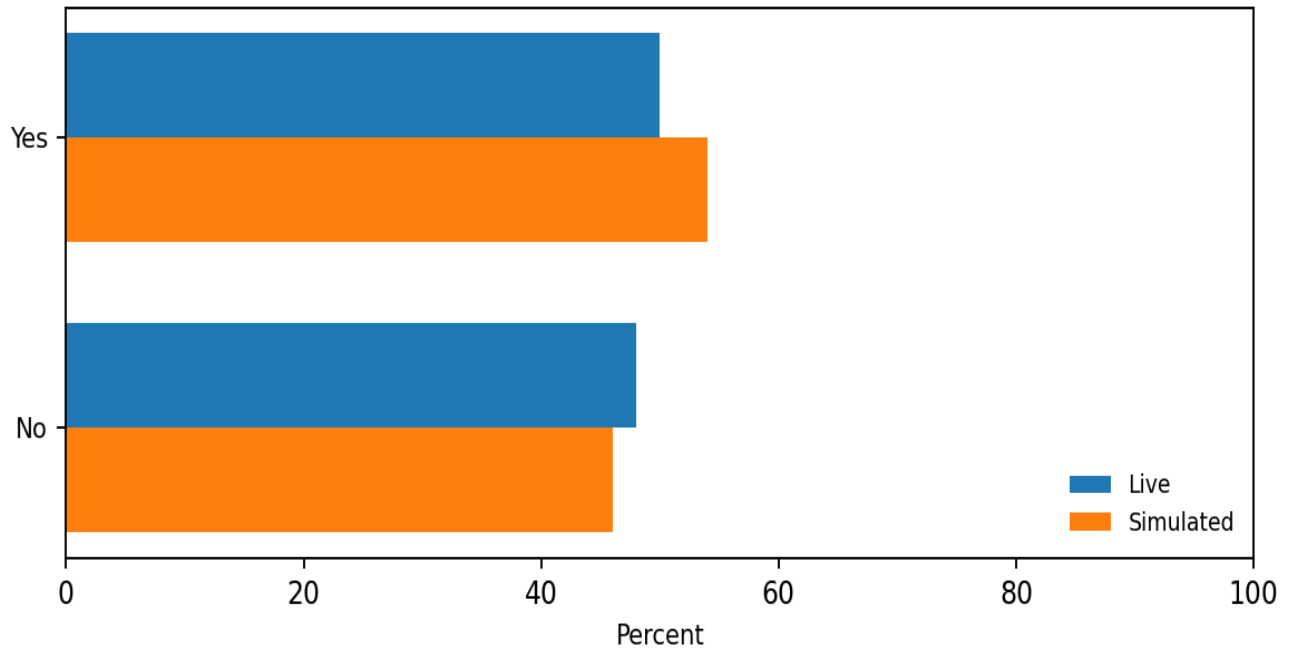


30

Do you feel you have enough information about the Affordable Care Act to understand how it is affecting your medical practice?

KL Divergence (Live ■ Simulated): 0.001

Sample size: Live n=1,624 | Simulated n=1,624

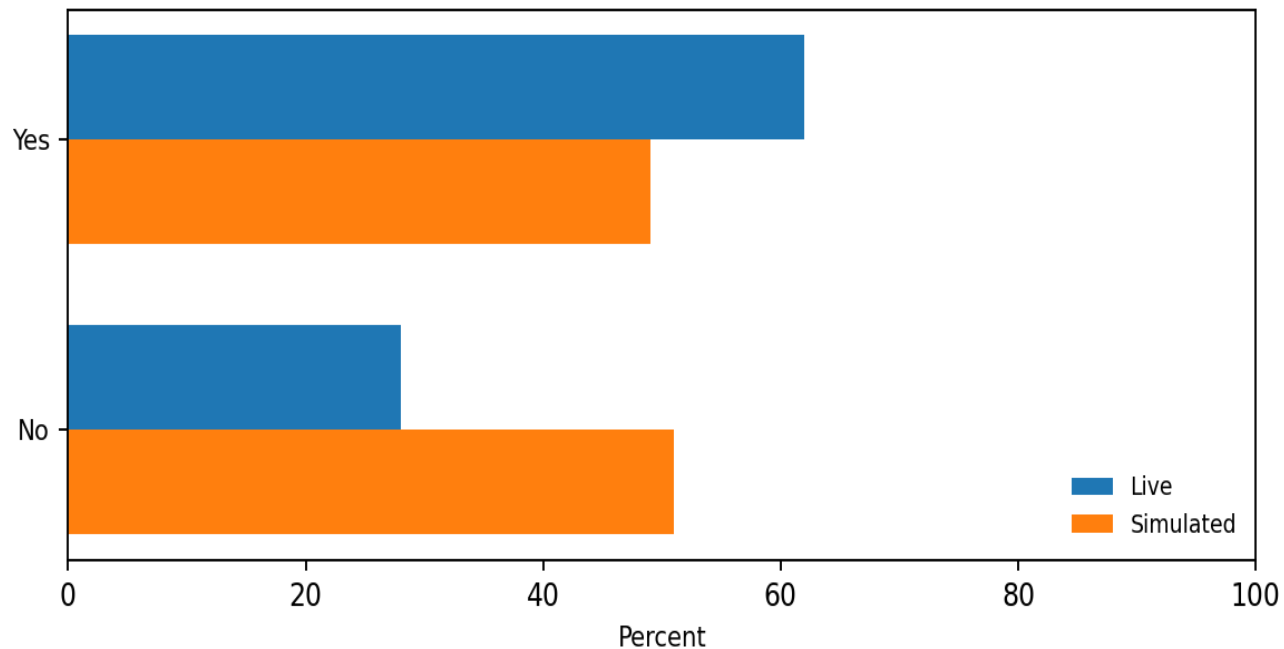


34d_1

How are you paid for seeing patients: Fee-for-service based

KL Divergence (Live ■ Simulated): 0.018

Sample size: Live n=1,624 | Simulated n=1,624

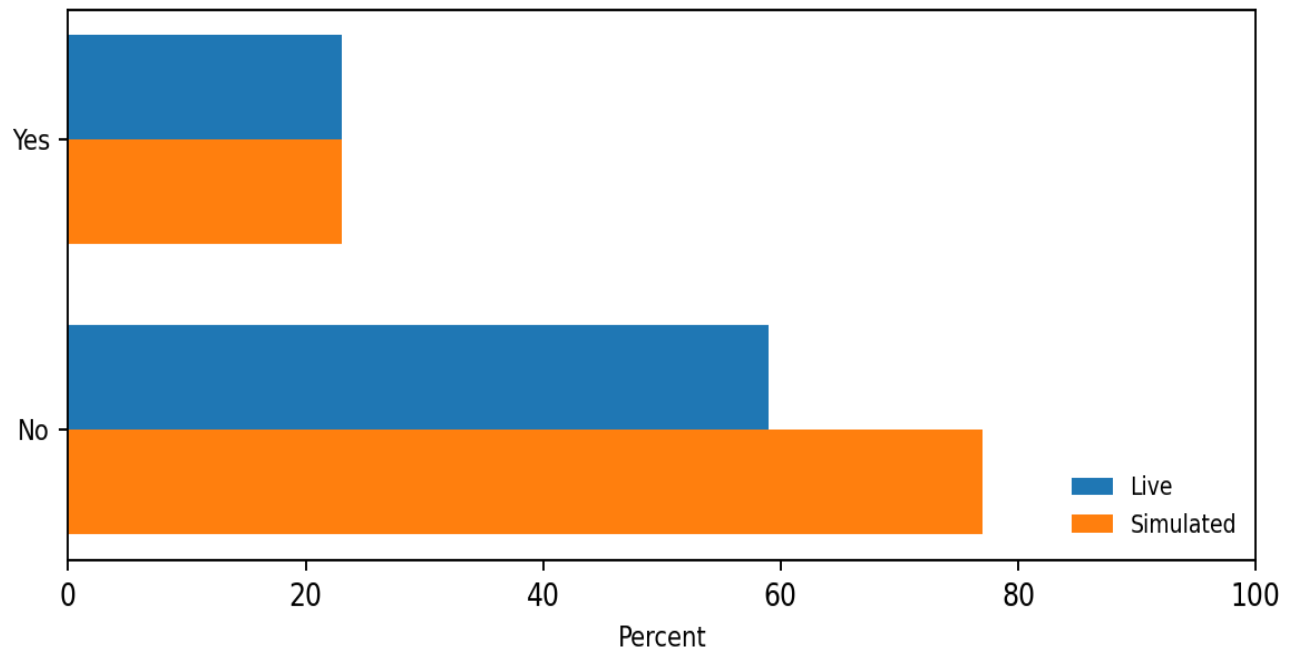


34d_2

How are you paid for seeing patients: Capitation

KL Divergence (Live ■ Simulated): 0.000

Sample size: Live n=1,624 | Simulated n=1,624

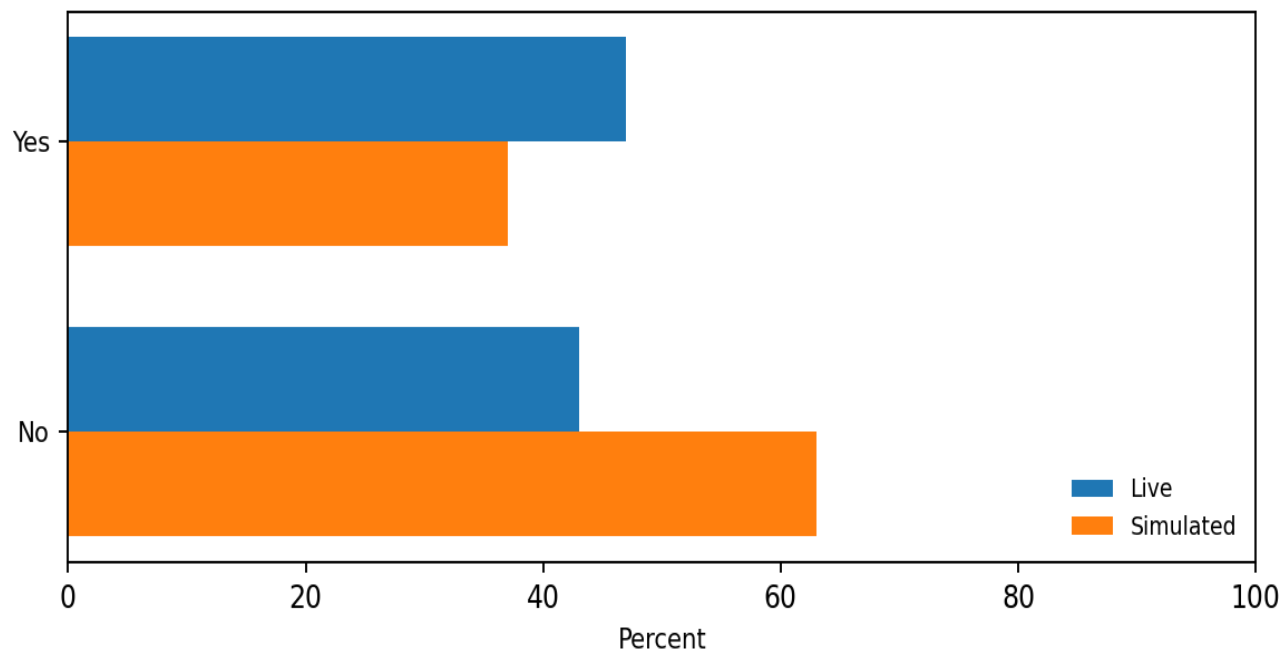


34d_3

How are you paid for seeing patients: Salary based

KL Divergence (Live ■ Simulated): 0.012

Sample size: Live n=1,624 | Simulated n=1,624

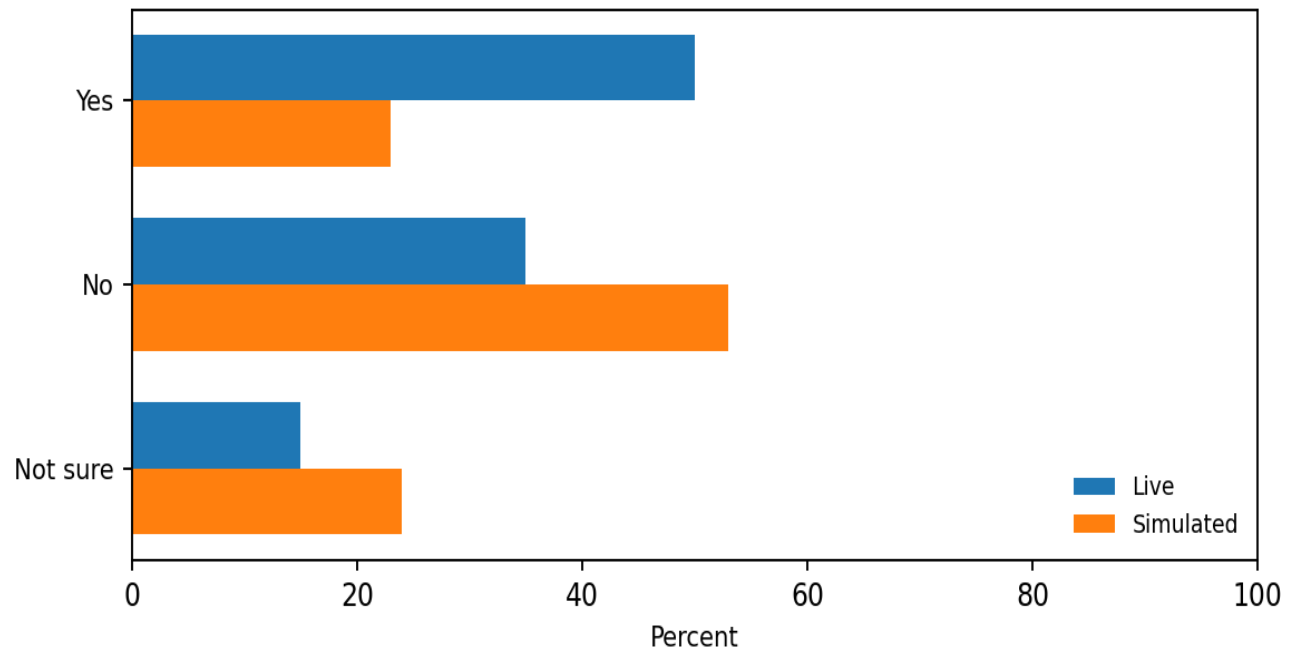


36a

Are you or your practice currently receiving incentives or payments based on the following: Quality of care or patient experiences

KL Divergence (Live ■ Simulated): 0.079

Sample size: Live n=1,624 | Simulated n=1,624

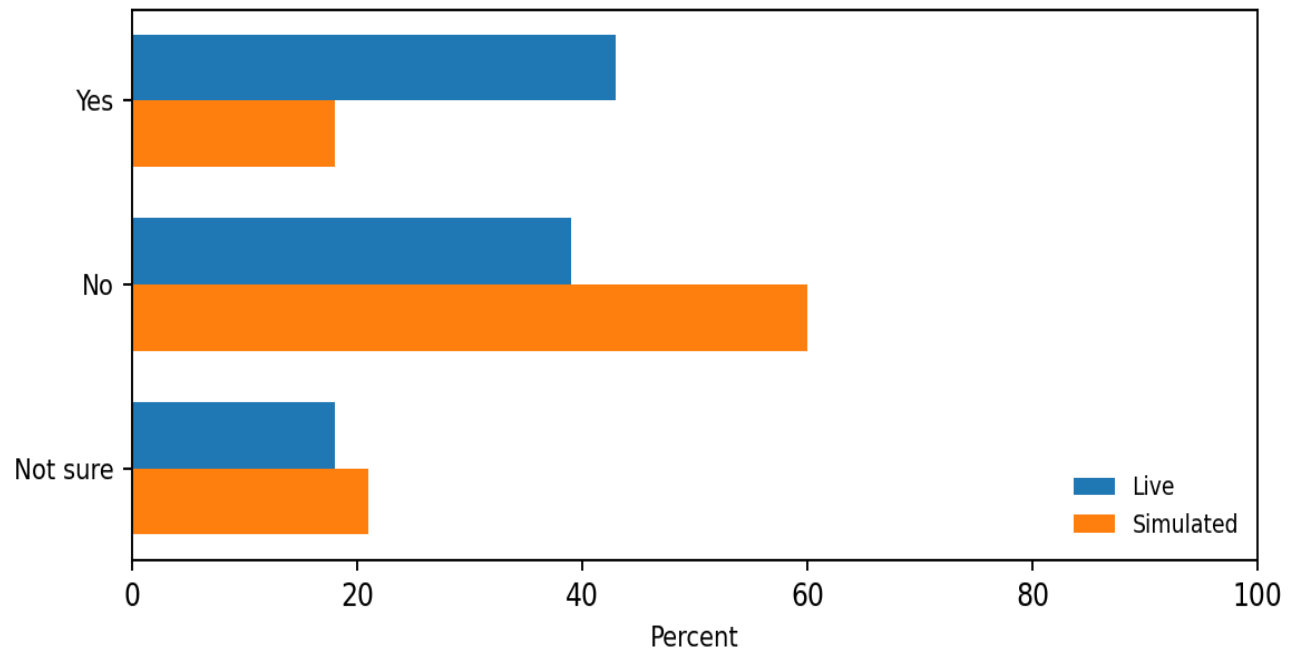


36b

Are you or your practice currently receiving incentives or payments based on the following: Utilization or efficiency in care

KL Divergence (Live ■ Simulated): 0.086

Sample size: Live n=1,624 | Simulated n=1,624

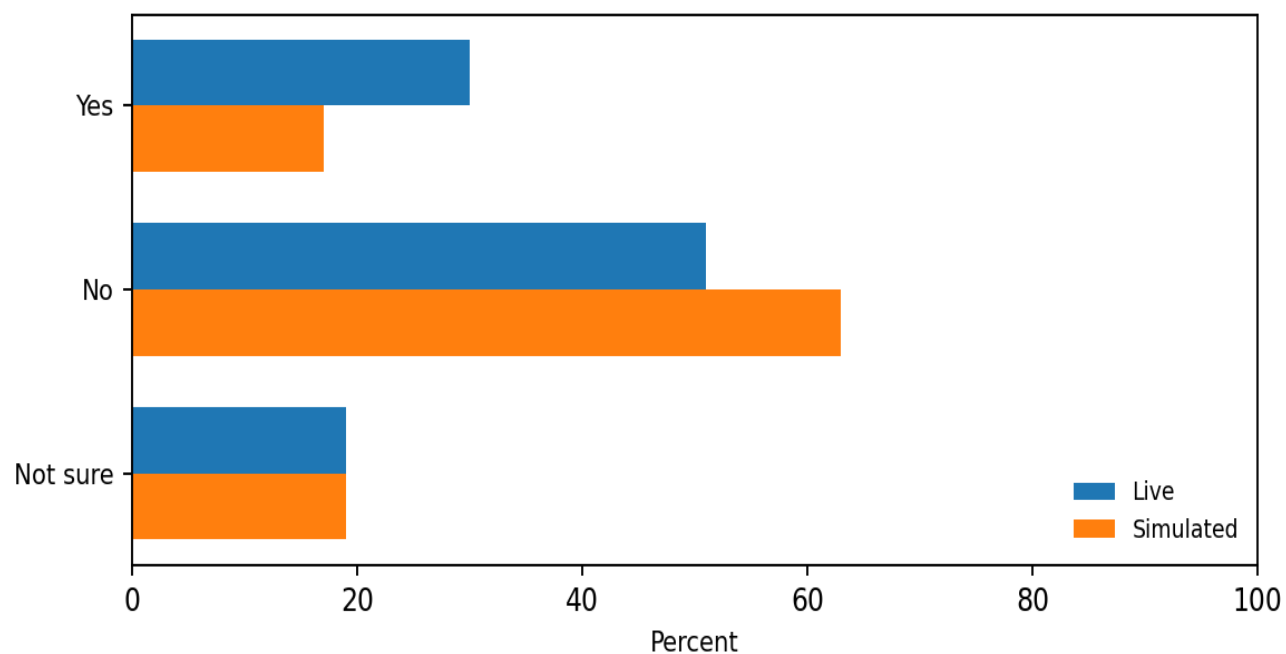


36c

Are you or your practice currently receiving incentives or payments based on the following: Qualifying as a Patient-Centered Medical Home (PCMH) or Advanced Primary Care Practice (APCP)

KL Divergence (Live ■ Simulated): 0.018

Sample size: Live n=1,624 | Simulated n=1,624

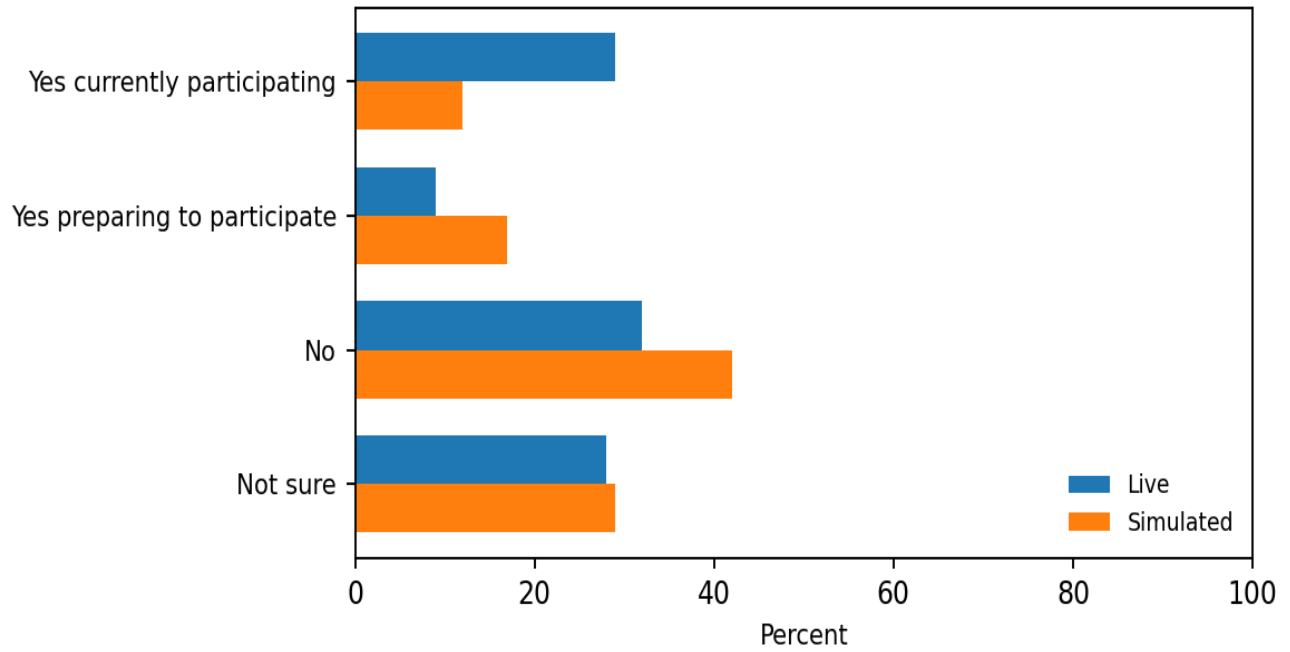


37

Is your practice currently participating or preparing to participate in an Accountable Care Organization (ACO) arrangement with Medicare or private insurers?

KL Divergence (Live ■ Simulated): 0.038

Sample size: Live n=1,624 | Simulated n=1,624

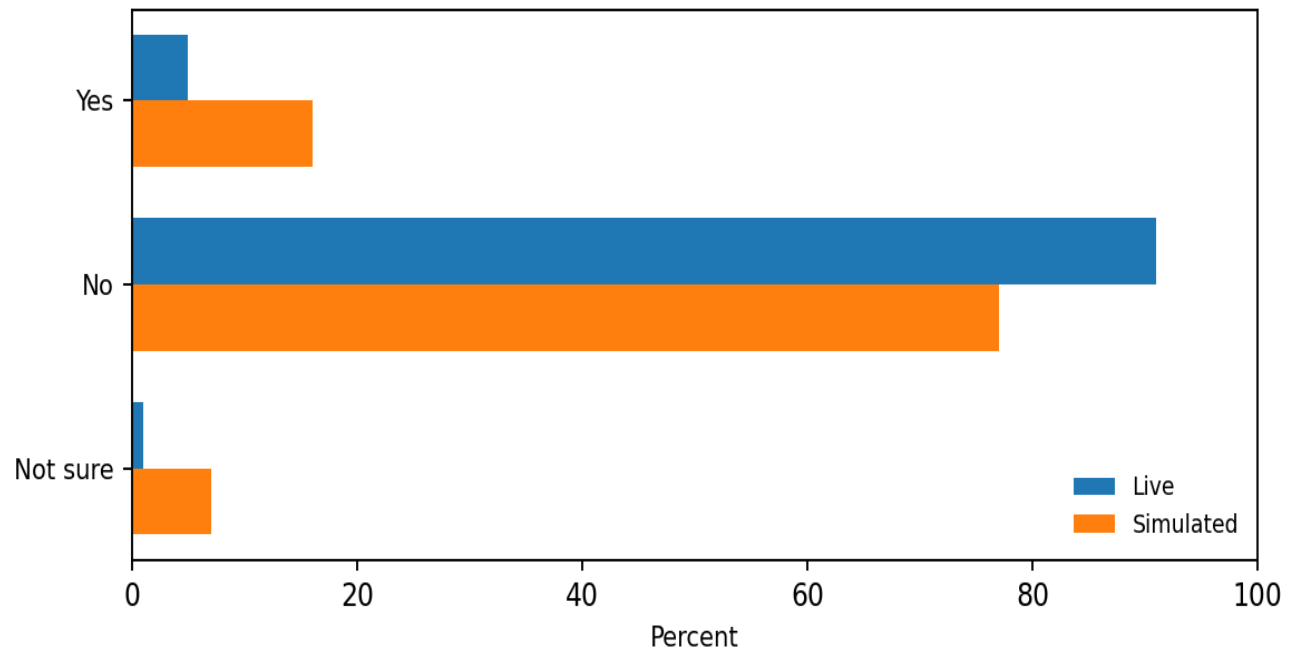


39a

In the past 2 years has your practice consolidated with or been acquired by: A group practice

KL Divergence (Live ■ Simulated): 0.050

Sample size: Live n=1,624 | Simulated n=1,624

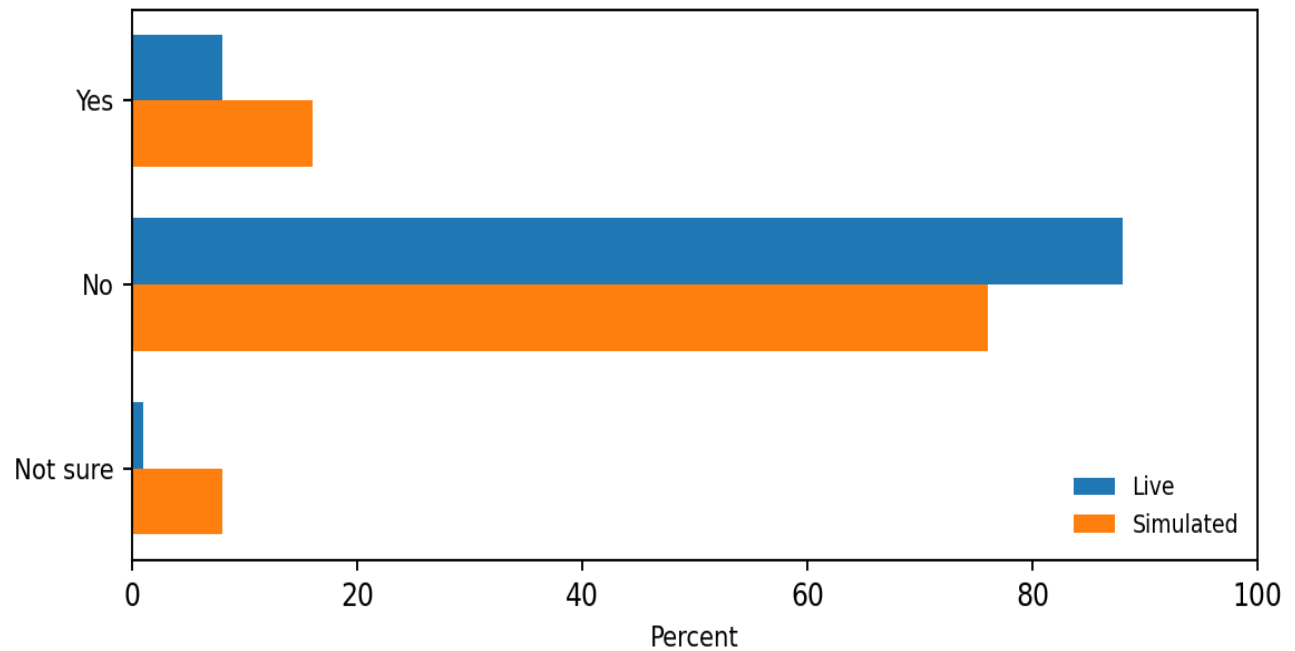


39b

In the past 2 years has your practice consolidated with or been acquired by: A hospital

KL Divergence (Live ■ Simulated): 0.033

Sample size: Live n=1,624 | Simulated n=1,624

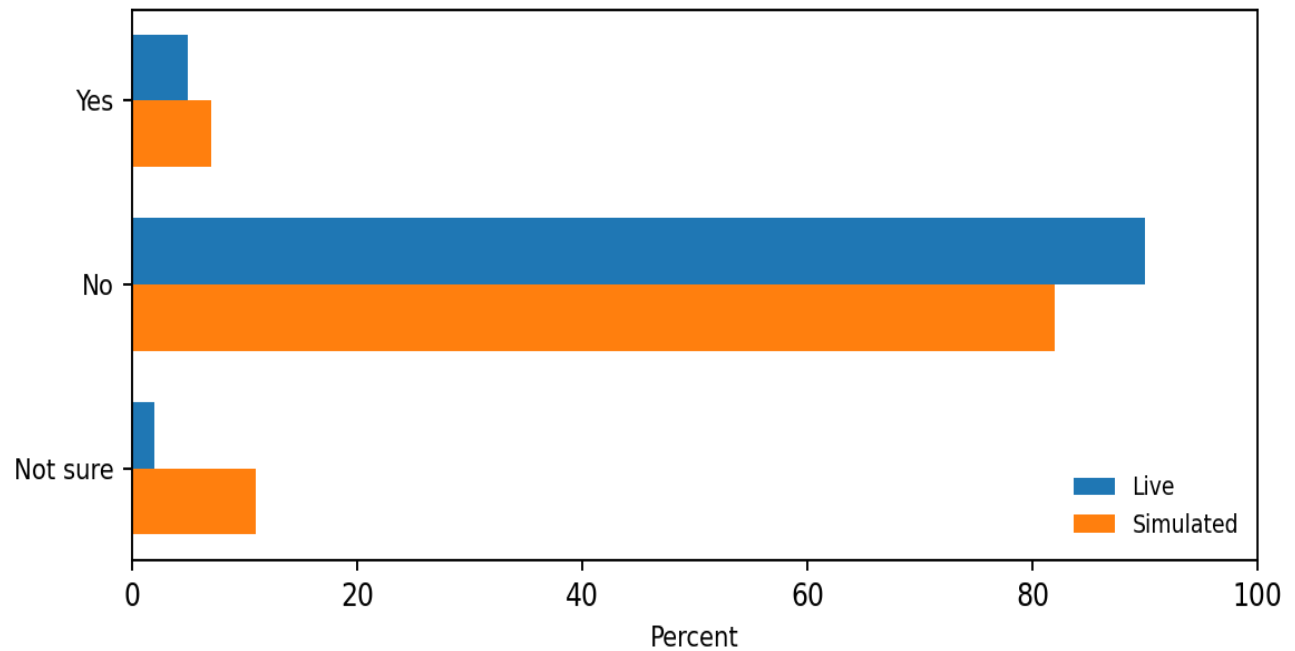


39c

In the past 2 years has your practice consolidated with or been acquired by: Another type of organization

KL Divergence (Live ■ Simulated): 0.011

Sample size: Live n=1,624 | Simulated n=1,624

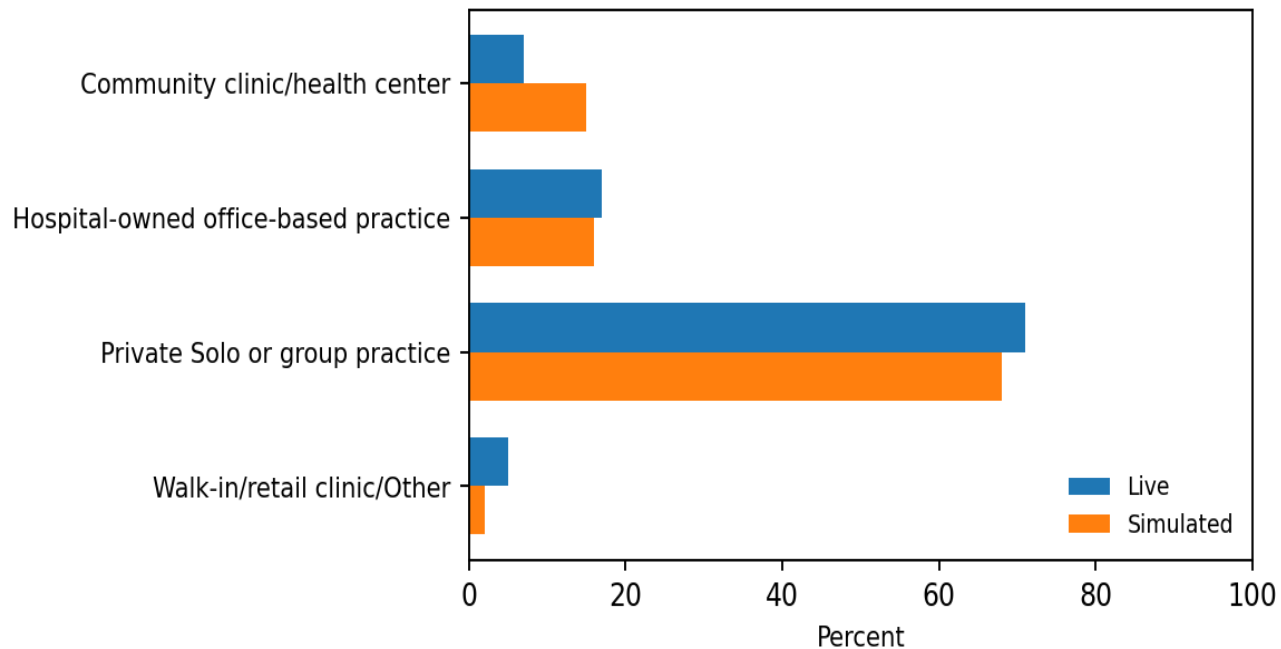


40

Which of the following best describes your primary practice setting:

KL Divergence (Live ■ Simulated): 0.014

Sample size: Live n=1,624 | Simulated n=1,624

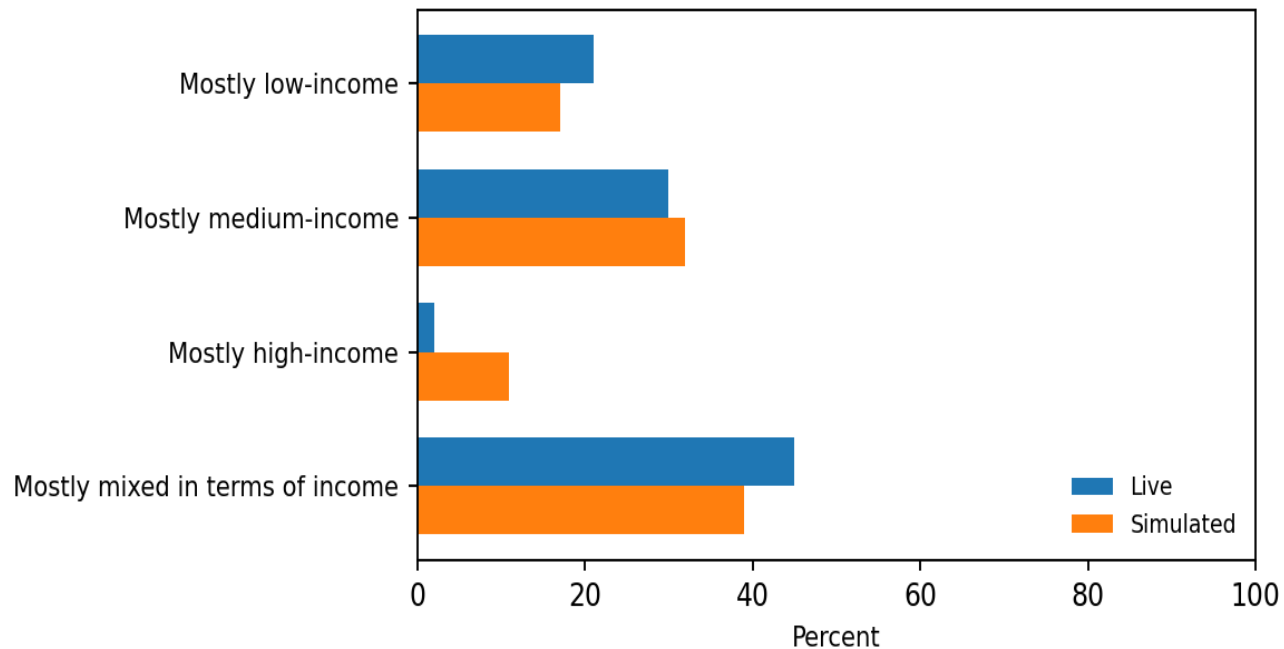


41

Are the patients served by your practice:

KL Divergence (Live ■ Simulated): 0.016

Sample size: Live n=1,624 | Simulated n=1,624

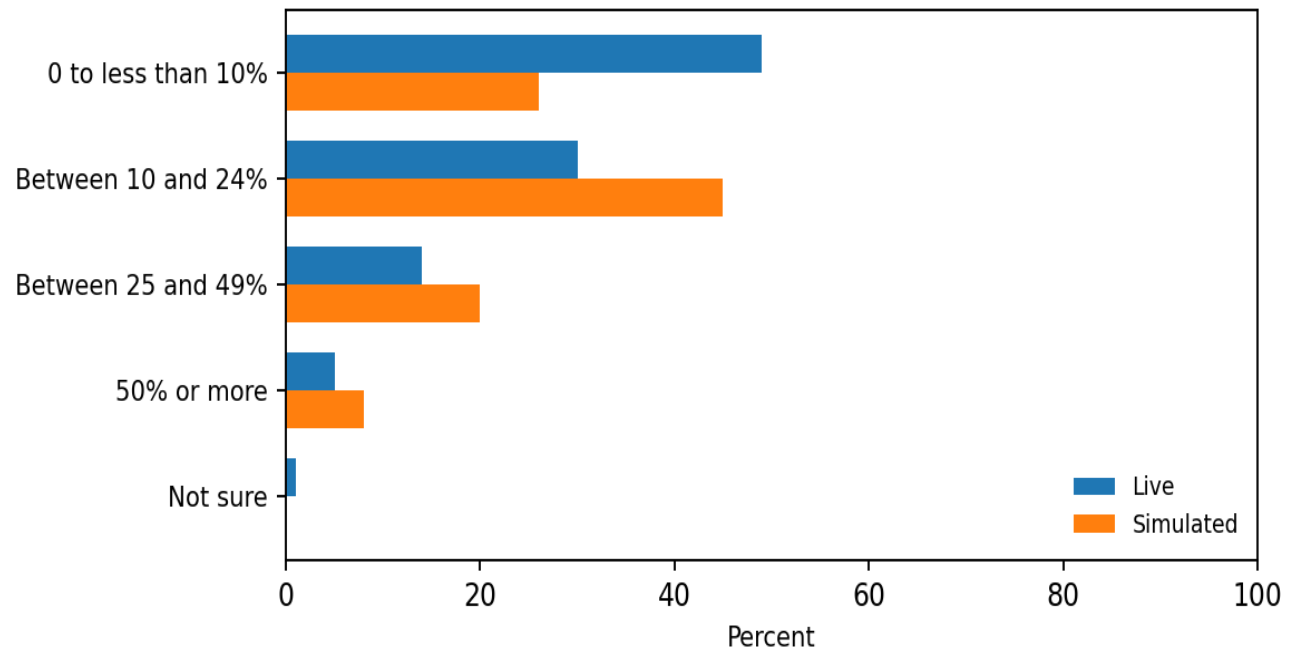


42a

About what percentage of your patients are: African American

KL Divergence (Live ■ Simulated): 0.052

Sample size: Live n=1,624 | Simulated n=1,624

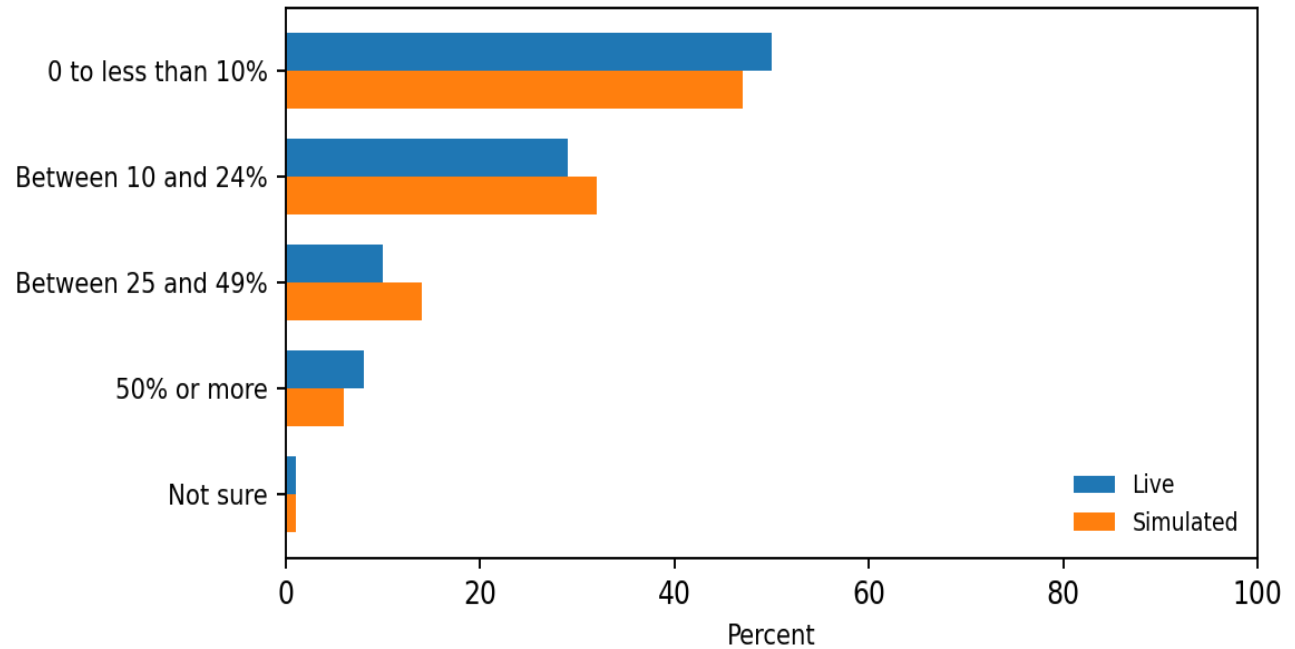


42b

About what percentage of your patients are: Hispanic/Latino

KL Divergence (Live ■ Simulated): 0.007

Sample size: Live n=1,624 | Simulated n=1,624

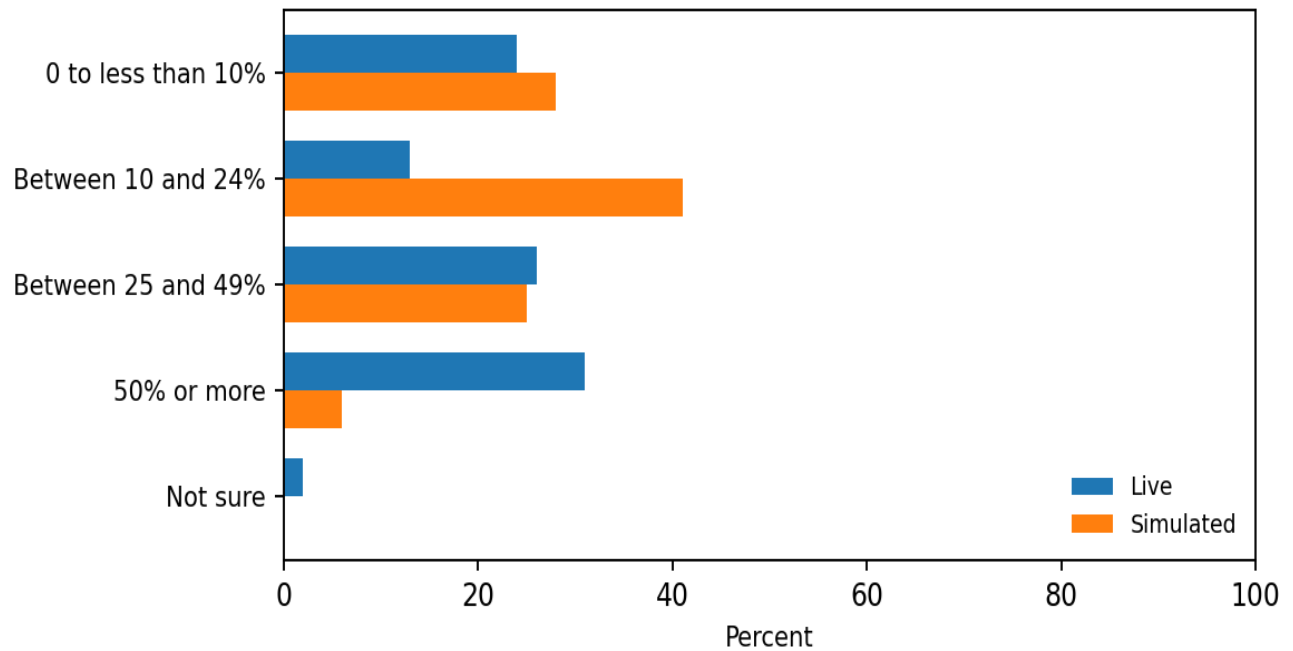


42c

About what percentage of your patients are: Elderly (over age 65)

KL Divergence (Live ■ Simulated): 0.140

Sample size: Live n=1,624 | Simulated n=1,624

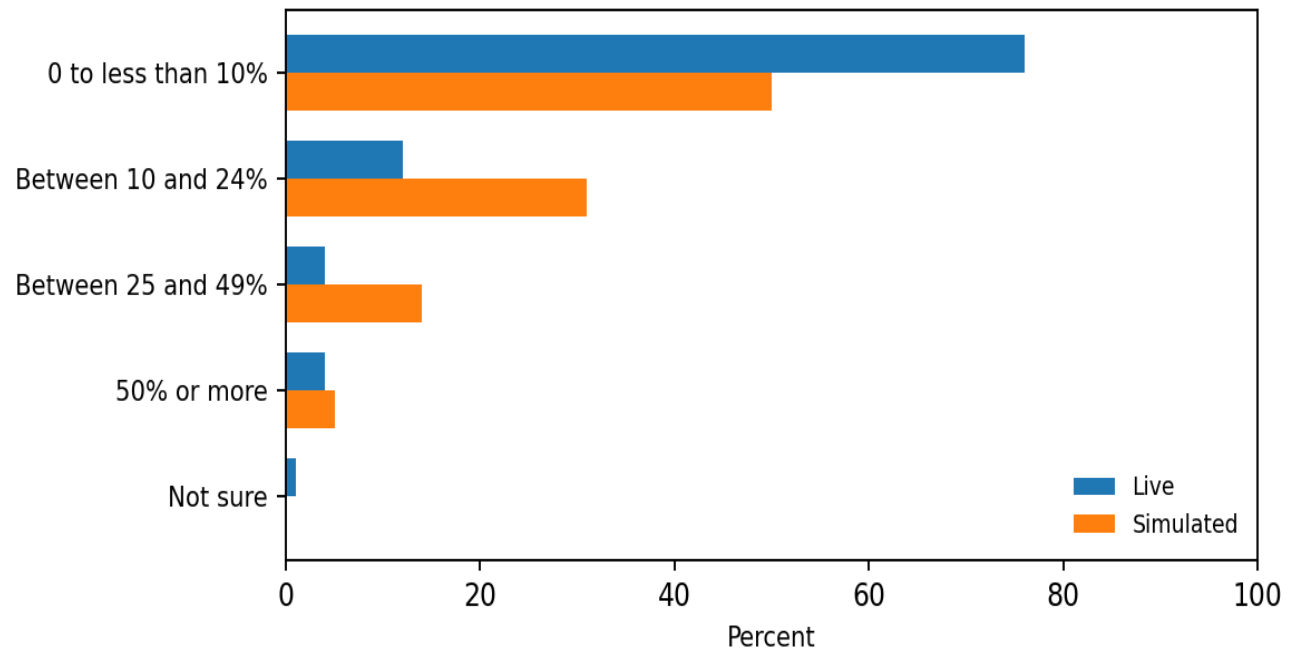


42d

About what percentage of your patients are: Speak little or no English

KL Divergence (Live ■ Simulated): 0.075

Sample size: Live n=1,624 | Simulated n=1,624

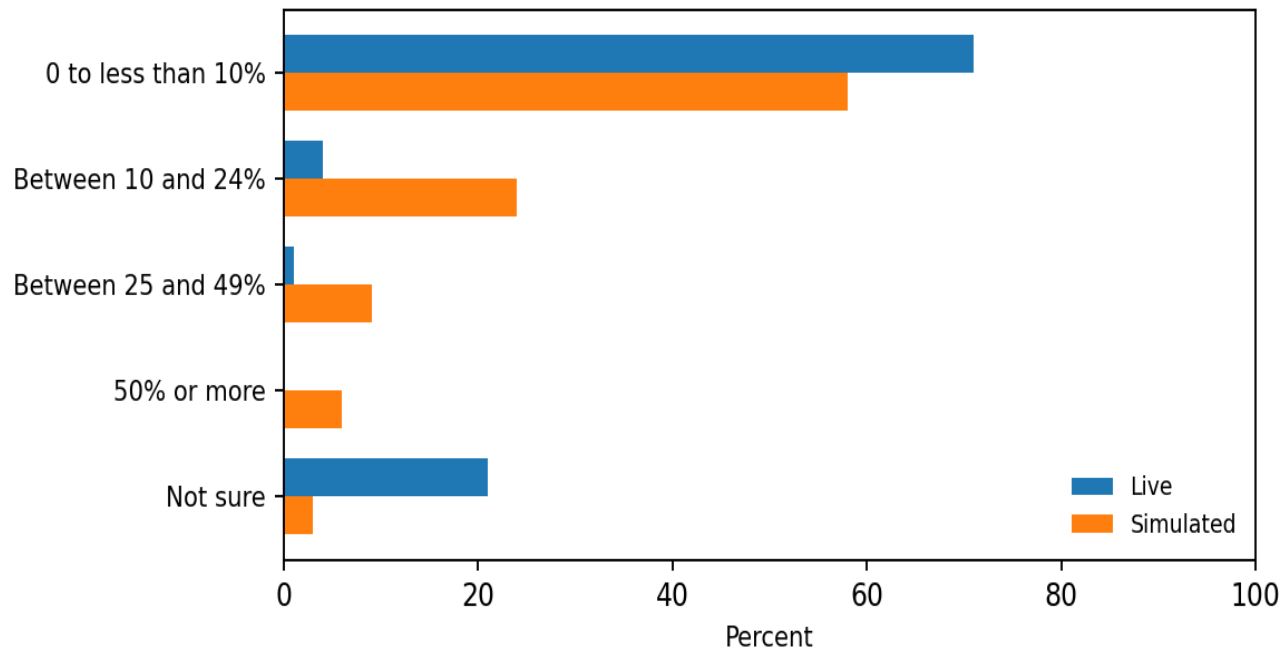


42e

About what percentage of your patients are: Undocumented immigrants

KL Divergence (Live ■ Simulated): 0.116

Sample size: Live n=1,624 | Simulated n=1,624

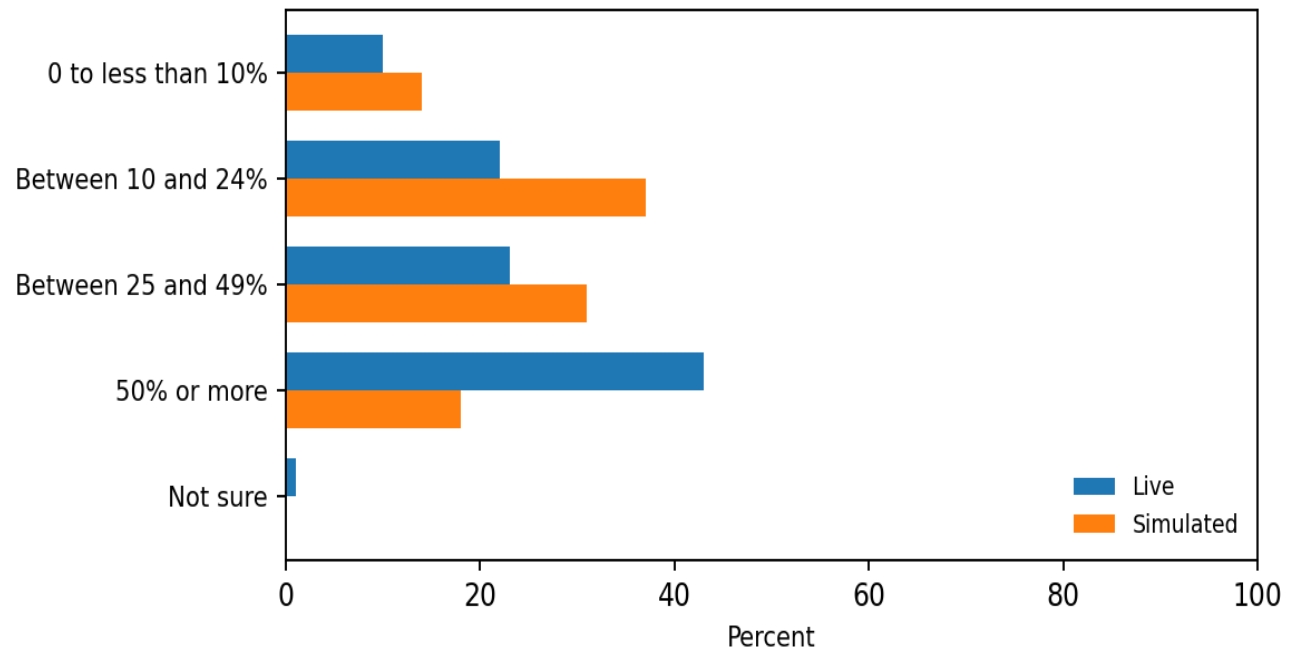


42f

About what percentage of your patients are: Have complex or numerous health problems

KL Divergence (Live ■ Simulated): 0.088

Sample size: Live n=1,624 | Simulated n=1,624

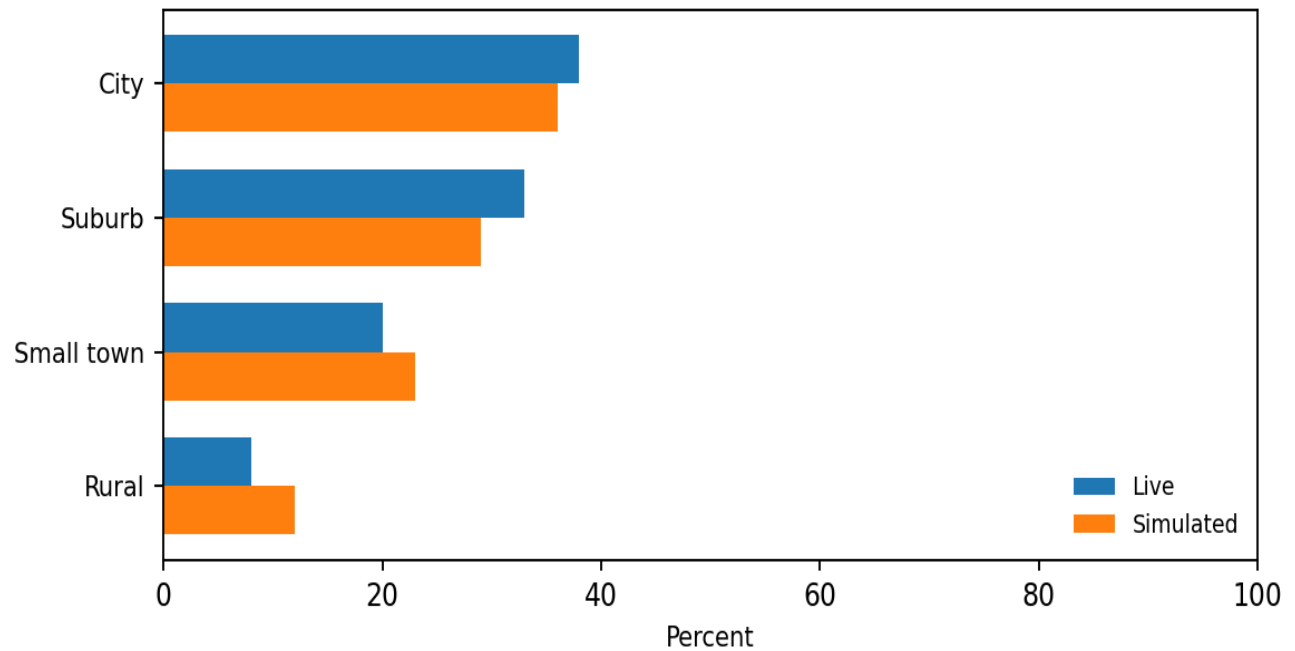


43

Where is your practice located?

KL Divergence (Live ■ Simulated): 0.004

Sample size: Live n=1,624 | Simulated n=1,624

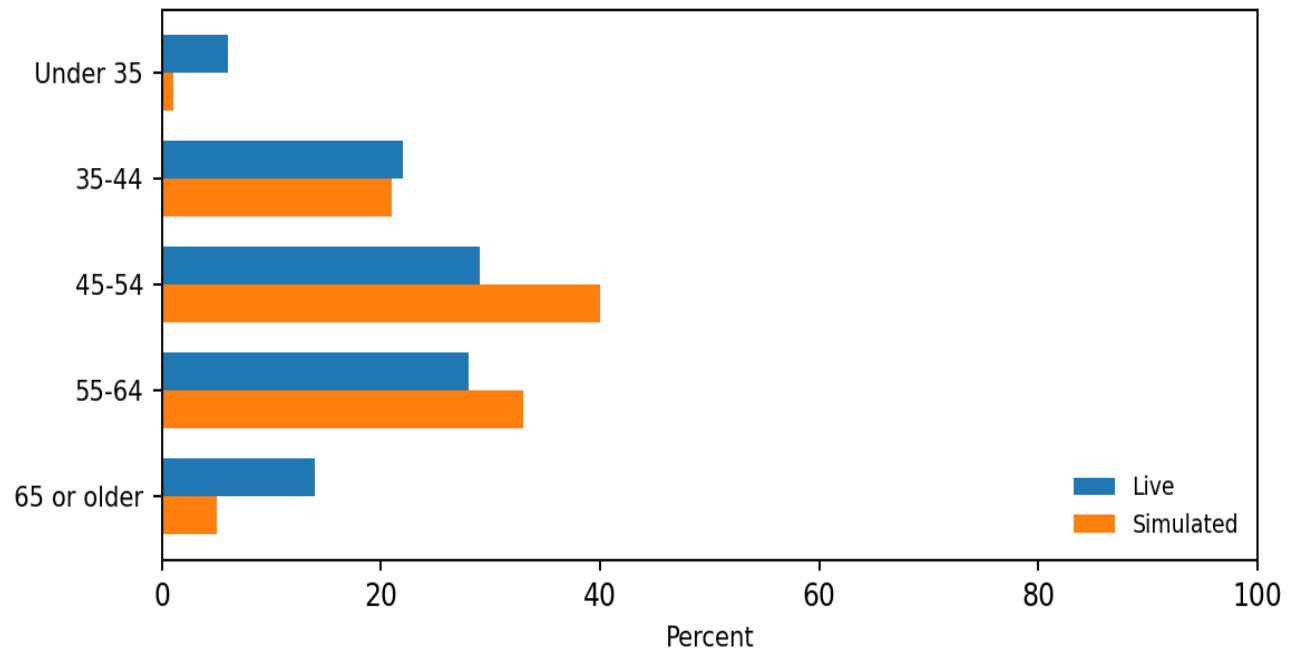


44

How old are you?

KL Divergence (Live ■ Simulated): 0.103

Sample size: Live n=1,624 | Simulated n=1,624

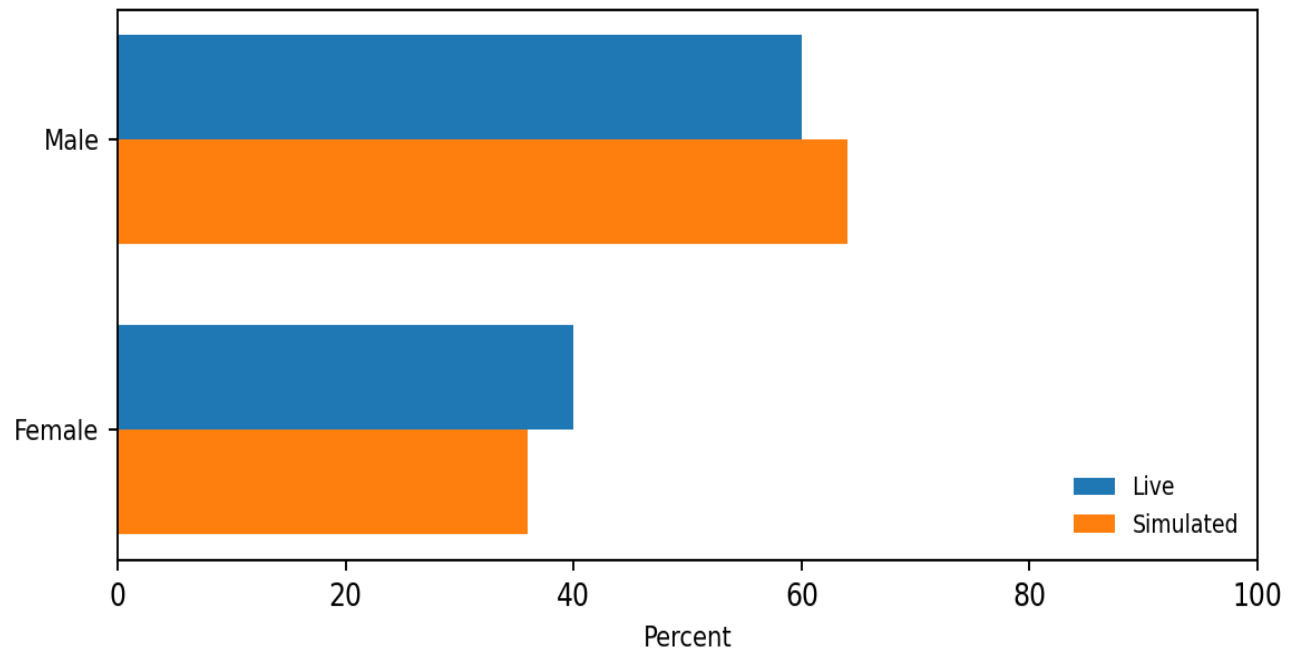


45

Are you:

KL Divergence (Live ■ Simulated): 0.001

Sample size: Live n=1,624 | Simulated n=1,624

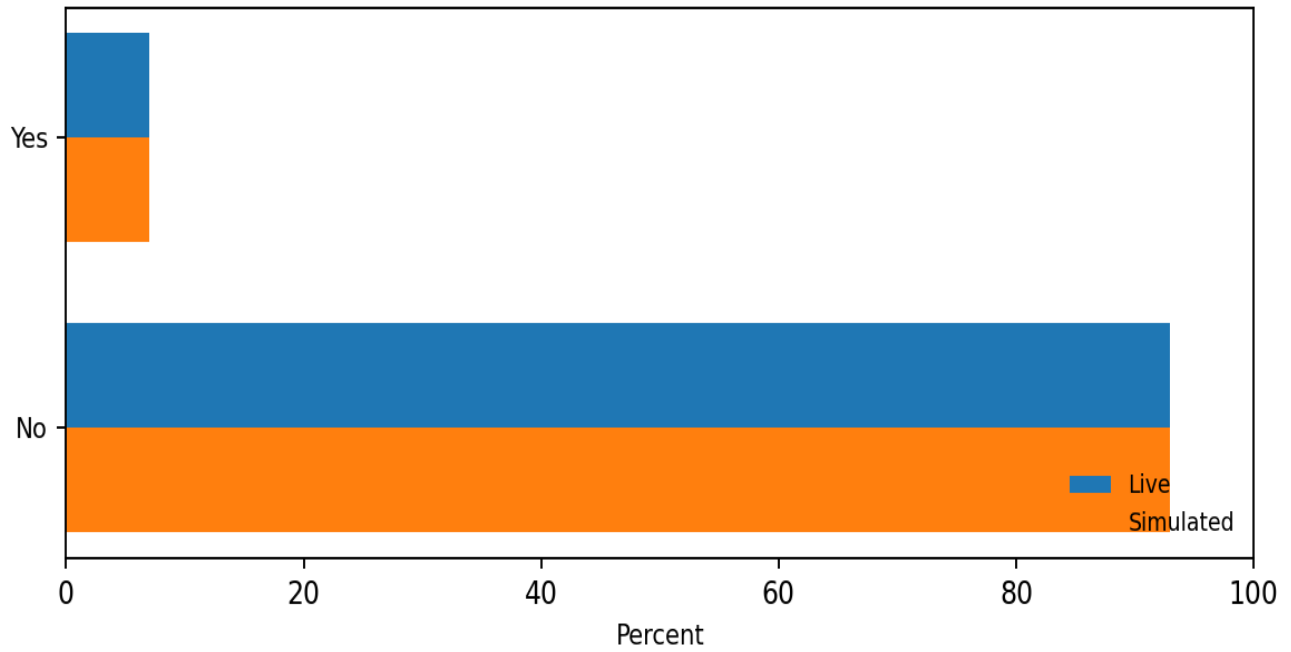


46

Are you of Hispanic or Latino background such as Mexican Puerto Rican Cuban or some other Latin American background?

KL Divergence (Live ■ Simulated): 0.000

Sample size: Live n=1,624 | Simulated n=1,624

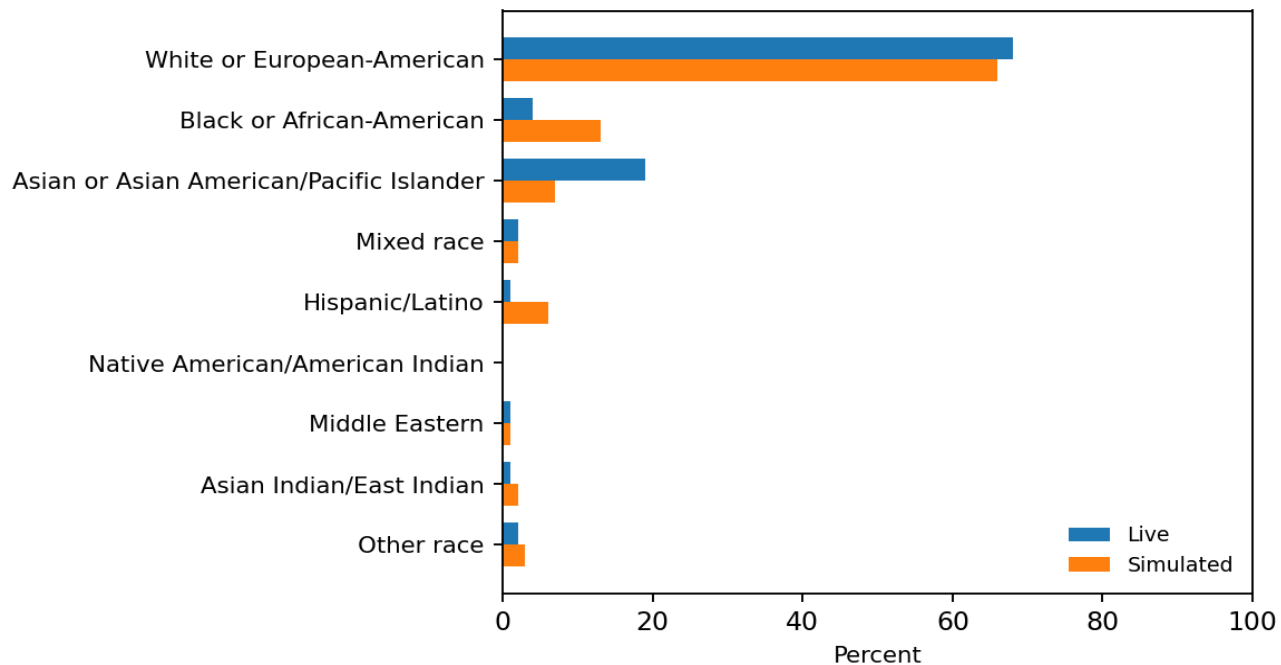


47

What is your race?

KL Divergence (Live ■ Simulated): 0.053

Sample size: Live n=1,624 | Simulated n=1,624

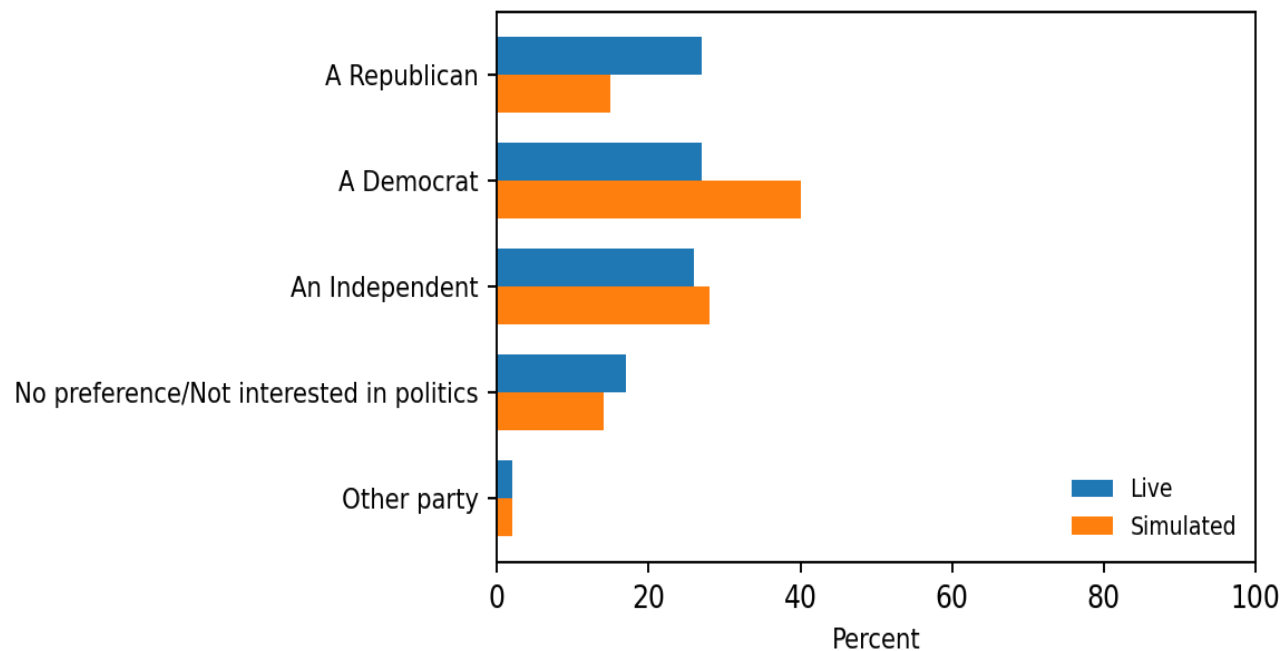


48

In politics today do you consider yourself:

KL Divergence (Live ■ Simulated): 0.028

Sample size: Live n=1,624 | Simulated n=1,624



COMMONWEALTH FUND/KAISER FAMILY FOUNDATION

PROJECT DATE	QUESTIONS	LANGUAGE
December 2025	53	en

Contents

Q1c	What percentage of your work time is spent on providing care...	Single Choice
Q1d	Do you have a panel of patients that you follow throughout t...	Single Choice
Q2a	Please indicate how satisfied you are with the following asp...	Single Choice
Q2b	Please indicate how satisfied you are with the following asp...	Single Choice
Q2c	Please indicate how satisfied you are with the following asp...	Single Choice
Q4	Given what you know about the state of health care, would yo...	Single Choice
Q5	Would you say recent trends in health care:	Single Choice
Q7	Are you currently accepting new patients?	Single Choice
Q9	What proportion of your patients who request a same- or next...	Single Choice
Q10a	What percent of your patients fall into the following catego...	Single Choice
Q10b	What percent of your patients fall into the following catego...	Single Choice
Q10c	What percent of your patients fall into the following catego...	Single Choice
Q10d	What percent of your patients fall into the following catego...	Single Choice
Q11a	Since January 2014, has the following increased, decreased o...	Single Choice
Q11c	Since January 2014, has the following increased, decreased o...	Single Choice
Q11d	Since January 2014, has the following increased, decreased o...	Single Choice
Q11e	Since January 2014, has the following increased, decreased o...	Single Choice
Q11b	Do you currently accept Medicare?	Single Choice
Q11d_1	In general, how would you rate Medicare when it comes to the...	Single Choice
Q11d_2	In general, how would you rate Medicare when it comes to the...	Single Choice
Q11f	The Affordable Care Act provides a 10% increase in Medicare ...	Single Choice
Q11g	Has this Medicare payment bump made a big difference, a smal...	Single Choice
Q11h	Do you currently accept Medicaid?	Single Choice
Q11j_1	In general, how would you rate Medicaid when it comes to the...	Single Choice
Q11j_2	In general, how would you rate Medicaid when it comes to the...	Single Choice
Q11l	Beginning in 2013, the Affordable Care Act temporarily incre...	Single Choice
Q11m	Has this Medicaid payment bump made a big difference, a smal...	Single Choice
Q11n	Do you currently accept at least one form of private health ...	Single Choice
Q11o_1	In general, how would you rate private health insurers when ...	Single Choice
Q11o_2	In general, how would you rate private health insurers when ...	Single Choice
Q12a	How, if at all, has the following changed in your practice s...	Grid Question

Q25	Do you think the following is having a positive, negative, o...	Grid Question
Q26	Overall, what is your opinion of the health care law that wa...	Single Choice
Q28	As you may know, the Affordable Care Act gives states the op...	Single Choice
Q29	Do you think the Affordable Care Act has had a positive, neg...	Grid Question
Q30	Do you feel you have enough information about the Affordable...	Single Choice
Q35a	Do you have a National Provider Identifier (NPI)?	Single Choice
Q35b	Do you bill under your NPI number?	Single Choice
Q34d	How are you paid for seeing patients: (GRID - Multi-choice)	Grid Question
Q36	Are you or your practice currently receiving incentives or p...	Grid Question
Q37	Is your practice currently participating or preparing to par...	Single Choice
Q39	In the past 2 years, has your practice consolidated with or ...	Grid Question
Q40	Which of the following best describes your primary practice ...	Single Choice
Q41	Are the patients served by your practice:	Single Choice
Q42	About what percentage of your patients are: (GRID)	Grid Question
Q43	Where is your practice located? (If you work at more than on...	Single Choice
Q44	How old are you?	Single Choice
Q45	Are you:	Single Choice
Q46	Are you of Hispanic or Latino background, such as Mexican, P...	Single Choice
Q47	What is your race?	Single Choice
Q48	In politics today, do you consider yourself:	Single Choice
demographic....	What is your medical specialty?	Single Choice
Target_physi...	Are you a physician that spends at least 60% of their work ti...	Single Choice

Q1c Single Choice

What percentage of your work time is spent on providing care to patients as a primary care provider? (Please include time seeing patients, following up with patients, time on call, and handling administrative tasks related to patient care. Please do not include time spent on other activities such as research, teaching, or time spent providing specialty care.)

- ☐ Less than 30% time spent providing primary care (1)
- ☐ 30-59% time spent providing primary care (2)
- ☐ 60-74% time spent providing primary care (3)
- ☐ At least 75% time spent providing primary care (4)

Q1d Single Choice

Do you have a panel of patients that you follow throughout the year?

- ☐ Yes (1)
- ☐ No (2)

Q2a Single Choice

Please indicate how satisfied you are with the following aspect of your medical practice:
Your medical practice overall

- ☐ Very satisfied (1)
- ☐ Somewhat satisfied (2)
- ☐ Somewhat dissatisfied (3)
- ☐ Very dissatisfied (4)
- ☐ Not applicable (5)

Q2b Single Choice

Please indicate how satisfied you are with the following aspect of your medical practice:
The time you have to spend with each patient

- ☐ Very satisfied (1)
- ☐ Somewhat satisfied (2)
- ☐ Somewhat dissatisfied (3)
- ☐ Very dissatisfied (4)

- ☐ Not applicable (5)

Q2c Single Choice

Please indicate how satisfied you are with the following aspect of your medical practice:
The level of collaboration with other team members

- ☐ Very satisfied (1)
☐ Somewhat satisfied (2)
☐ Somewhat dissatisfied (3)
☐ Very dissatisfied (4)
☐ Not applicable (5)

Q4 Single Choice

Given what you know about the state of health care, would you advise a qualified high school or college student to pursue a career as a [primary care physician/nurse practitioner/physician assistant]?

- ☐ Definitely would (1)
☐ Probably would (2)
☐ Probably would not (3)
☐ Definitely would not (4)
☐ Not sure (5)

Q5 Single Choice

Would you say recent trends in health care:

- ☐ Causing you to consider retiring earlier than you thought you would (1)
☐ Causing you to delay your retirement plans (2)
☐ Not having an impact on your retirement plans (3)

Q7 Single Choice

Are you currently accepting new patients?

- ☐ Yes, I accept new patients (1)
- ☐ No, I have stopped accepting new patients within the past 12 months (2)
- ☐ No, I stopped accepting new patients more than 12 months ago (3)

Q9 Single Choice

What proportion of your patients who request a same- or next-day appointment can get one?

- ☐ Almost all (More than 80%) (1)
- ☐ Most (60-80%) (2)
- ☐ About half (About 50%) (3)
- ☐ Some (20-40%) (4)
- ☐ Few (Less than 20%) (5)
- ☐ Not sure (6)

Q10a Single Choice

What percent of your patients fall into the following category: Medicare (Your best estimate is fine.)

- ☐ 0% (1)
- ☐ 1% to less than 10% (2)
- ☐ 10% to less than 25% (3)
- ☐ 25% to less than 50% (4)
- ☐ 50% or more (5)
- ☐ Not sure (6)

Q10b Single Choice

What percent of your patients fall into the following category: Medicaid (Your best estimate is fine.)

- ☐ 0% (1)
- ☐ 1% to less than 10% (2)
- ☐ 10% to less than 25% (3)
- ☐ 25% to less than 50% (4)
- ☐ 50% or more (5)
- ☐ Not sure (6)

Q10c Single Choice

What percent of your patients fall into the following category: Private insurance (Your best estimate is fine.)

- ☐ 0% (1)
- ☐ 1% to less than 10% (2)
- ☐ 10% to less than 25% (3)
- ☐ 25% to less than 50% (4)
- ☐ 50% or more (5)
- ☐ Not sure (6)

Q10d Single Choice

What percent of your patients fall into the following category: Uninsured (Your best estimate is fine.)

- ☐ 0% (1)
- ☐ 1% to less than 10% (2)
- ☐ 10% to less than 25% (3)
- ☐ 25% to less than 50% (4)
- ☐ 50% or more (5)
- ☐ Not sure (6)

Q11a Single Choice

Since January 2014, has the following increased, decreased or stayed about the same:
The total number of patients you see

- ☐ Increased since Jan 2014 (1)
- ☐ Decreased since Jan 2014 (2)
- ☐ Stayed about the same (3)
- ☐ Not applicable (4)
- ☐ Not sure (5)

Q11c Single Choice

Since January 2014, has the following increased, decreased or stayed about the same:
The number of Medicaid patients you see

- ☐ Increased since Jan 2014 (1)
- ☐ Decreased since Jan 2014 (2)
- ☐ Stayed about the same (3)
- ☐ Not applicable (4)
- ☐ Not sure (5)

Q11d Single Choice

Since January 2014, has the following increased, decreased or stayed about the same:
The number of patients you see who recently gained health insurance after being uninsured

- ☐ Increased since Jan 2014 (1)
- ☐ Decreased since Jan 2014 (2)
- ☐ Stayed about the same (3)
- ☐ Not applicable (4)
- ☐ Not sure (5)

Q11e Single Choice

Since January 2014, has the following increased, decreased or stayed about the same:
The number of patients you see who are chronically ill

- ☐ Increased since Jan 2014 (1)
- ☐ Decreased since Jan 2014 (2)
- ☐ Stayed about the same (3)
- ☐ Not applicable (4)
- ☐ Not sure (5)

Q11b Single Choice

Do you currently accept Medicare?

- ☐ Yes, I accept Medicare (1)
- ☐ No, I do not accept Medicare (2)
- ☐ Not applicable (3)

Q11d_1 Single Choice

In general, how would you rate Medicare when it comes to the following: How much you are paid

- ☐ Excellent (1)
- ☐ Good (2)
- ☐ Only fair (3)
- ☐ Poor (4)
- ☐ Not sure (5)

Q11d_2 Single Choice

In general, how would you rate Medicare when it comes to the following: Ease of administration related to reimbursements

- ☐ Excellent (1)
- ☐ Good (2)
- ☐ Only fair (3)
- ☐ Poor (4)

- ☐ Not sure (5)

Q11f Single Choice

The Affordable Care Act provides a 10% increase in Medicare payments to certain primary care providers from 2011 through 2015. Were you aware of this increase? (If yes: Did you personally receive an increase in reimbursements as a result of this Medicare "payment bump" or not?)

- ☐ Yes, aware of increase and received bump (1)
☐ Yes, aware of increase but did not receive bump (2)
☐ No, was not aware of increase (3)

Q11g Single Choice

Has this Medicare payment bump made a big difference, a small difference, or no difference in your ability to serve your Medicare patients?

- ☐ Big difference (1)
☐ Small difference (2)
☐ No difference (3)
☐ Not sure (4)

Q11h Single Choice

Do you currently accept Medicaid?

- ☐ Yes, I accept Medicaid and am currently accepting new Medicaid patients (1)
☐ Yes, I accept Medicaid, but I am not taking new Medicaid patients at this time (2)
☐ No, I do not accept Medicaid (3)

Q11j_1 Single Choice

In general, how would you rate Medicaid when it comes to the following: How much you are paid

- ☐ Excellent (1)
- ☐ Good (2)
- ☐ Only fair (3)
- ☐ Poor (4)
- ☐ Not sure (5)

Q11j_2 Single Choice

In general, how would you rate Medicaid when it comes to the following: Ease of administration related to reimbursements

- ☐ Excellent (1)
- ☐ Good (2)
- ☐ Only fair (3)
- ☐ Poor (4)
- ☐ Not sure (5)

Q11i Single Choice

Beginning in 2013, the Affordable Care Act temporarily increased Medicaid payments for primary care to match Medicare rates. Were you aware of this increase? (If yes: Did you personally receive an increase in reimbursements as a result of this Medicaid "payment bump" or not?)

- ☐ Yes, aware of increase and received bump (1)
- ☐ Yes, aware of increase but did not receive bump (2)
- ☐ No, was not aware of increase (3)

Q11m Single Choice

Has this Medicaid payment bump made a big difference, a small difference, or no difference in your willingness to see Medicaid patients?

- ☐ Big difference (1)
- ☐ Small difference (2)
- ☐ No difference (3)
- ☐ Not sure (4)

Q11n Single Choice

Do you currently accept at least one form of private health insurance?

- ☐ Yes, I accept private insurance and am currently accepting new privately insured patients (1)
- ☐ Yes, I accept private insurance, but I am not taking new patients with private insurance at this time (2)
- ☐ No, I do not accept any form of private health insurance (3)

Q11o_1 Single Choice

In general, how would you rate private health insurers when it comes to the following: How much you are paid

- ☐ Excellent (1)
- ☐ Good (2)
- ☐ Only fair (3)
- ☐ Poor (4)
- ☐ Not sure (5)

Q11o_2 Single Choice

In general, how would you rate private health insurers when it comes to the following: Ease of administration related to reimbursements

- ☐ Excellent (1)
- ☐ Good (2)
- ☐ Only fair (3)
- ☐ Poor (4)

☐ Not sure

(5)

Q12a Grid Question

How, if at all, has the following changed in your practice since January, 2014: (GRID)

	Much impro...	Somewhat i...	About the ...	Somewhat w...	Much worse	Not sure
Your ability to provide high...	<input type="radio"/>	<input type="radio"/>	<input type="radio"/>	<input type="radio"/>	<input type="radio"/>	<input type="radio"/>
The amount of time you have ...	<input type="radio"/>	<input type="radio"/>	<input type="radio"/>	<input type="radio"/>	<input type="radio"/>	<input type="radio"/>
Patient satisfaction and exp...	<input type="radio"/>	<input type="radio"/>	<input type="radio"/>	<input type="radio"/>	<input type="radio"/>	<input type="radio"/>
Amount of time spent on admi...	<input type="radio"/>	<input type="radio"/>	<input type="radio"/>	<input type="radio"/>	<input type="radio"/>	<input type="radio"/>
Your practice's ability to r...	<input type="radio"/>	<input type="radio"/>	<input type="radio"/>	<input type="radio"/>	<input type="radio"/>	<input type="radio"/>

Q25 Grid Question

Do you think the following is having a positive, negative, or no impact on primary care providers' ability to provide quality care to their patients: (GRID)

	Positive i...	Negative i...	No impact	Not sure
Increased use of quality met...	<input type="radio"/>	<input type="radio"/>	<input type="radio"/>	<input type="radio"/>
Increased reliance on non-ph...	<input type="radio"/>	<input type="radio"/>	<input type="radio"/>	<input type="radio"/>
Increased use of medical homes	<input type="radio"/>	<input type="radio"/>	<input type="radio"/>	<input type="radio"/>
Increased use of Accountable...	<input type="radio"/>	<input type="radio"/>	<input type="radio"/>	<input type="radio"/>
Increased use of health info...	<input type="radio"/>	<input type="radio"/>	<input type="radio"/>	<input type="radio"/>
Programs that include financ...	<input type="radio"/>	<input type="radio"/>	<input type="radio"/>	<input type="radio"/>
The expansion of Medicaid un ..	<input type="radio"/>	<input type="radio"/>	<input type="radio"/>	<input type="radio"/>

Q26 Single Choice

Overall, what is your opinion of the health care law that was passed in 2010, also known as the Affordable Care Act (ACA) or Obamacare?

- ☐ Very favorable (1)
- ☐ Somewhat favorable (2)
- ☐ Somewhat unfavorable (3)
- ☐ Very unfavorable (4)

Q28 Single Choice

As you may know, the Affordable Care Act gives states the option of expanding their Medicaid program to cover more low-income uninsured adults. As far as you know, has your state expanded its Medicaid program, or not?

- ☐ Yes, state has expanded (1)
- ☐ No, state has not expanded (2)
- ☐ Not sure (3)

Q29 Grid Question

Do you think the Affordable Care Act has had a positive, negative, or no impact on the following: (GRID)

	Positive i...	Negative i...	No impact	Not sure
Your medical practice overall	<input type="radio"/>	<input type="radio"/>	<input type="radio"/>	<input type="radio"/>
The quality of care your pat...	<input type="radio"/>	<input type="radio"/>	<input type="radio"/>	<input type="radio"/>
The cost of health care for ...	<input type="radio"/>	<input type="radio"/>	<input type="radio"/>	<input type="radio"/>
The ability of your practice...	<input type="radio"/>	<input type="radio"/>	<input type="radio"/>	<input type="radio"/>
Access to health care and in...	<input type="radio"/>	<input type="radio"/>	<input type="radio"/>	<input type="radio"/>

Q30 Single Choice

Do you feel you have enough information about the Affordable Care Act to understand how it is affecting your medical practice?

- ☐ Yes (1)
- ☐ No (2)

Q35a Single Choice

Do you have a National Provider Identifier (NPI)?

- ☐ Yes (1)
- ☐ No (2)

Q35b Single Choice

Do you bill under your NPI number?

- ☐ Yes (1)
- ☐ No (2)

Q34d Grid Question

How are you paid for seeing patients: (GRID - Multi-choice)

	Yes	No
Fee-for-service based	<input type="checkbox"/>	<input type="checkbox"/>
Capitation	<input type="checkbox"/>	<input type="checkbox"/>
Salary based	<input type="checkbox"/>	<input type="checkbox"/>

Q36 Grid Question

Are you or your practice currently receiving incentives or payments based on the following: (GRID)

	Yes	No	Not sure
Quality of care or patient e...	<input type="radio"/>	<input type="radio"/>	<input type="radio"/>
Utilization or efficiency in...	<input type="radio"/>	<input type="radio"/>	<input type="radio"/>
Qualifying as a Patient-Cent...	<input type="radio"/>	<input type="radio"/>	<input type="radio"/>

Q37 Single Choice

Is your practice currently participating or preparing to participate in an Accountable Care Organization (ACO) arrangement with Medicare or private insurers?

- ☐ Yes, currently participating (1)
- ☐ Yes, preparing to participate (2)
- ☐ No (3)
- ☐ Not sure (4)

Q39 Grid Question

In the past 2 years, has your practice consolidated with or been acquired by: (GRID)

	Yes	No	Not sure
A group practice	<input type="radio"/>	<input type="radio"/>	<input type="radio"/>
A hospital	<input type="radio"/>	<input type="radio"/>	<input type="radio"/>
Another type of organization	<input type="radio"/>	<input type="radio"/>	<input type="radio"/>

Q40 Single Choice

Which of the following best describes your primary practice setting:

- ☐ Community clinic/health center (1)
- ☐ Hospital-owned office-based practice (2)
- ☐ Private Solo or group practice (3)
- ☐ Walk-in/retail clinic/Other (4)

Q41 Single Choice

Are the patients served by your practice:

- ☐ Mostly low-income (1)
- ☐ Mostly medium-income (2)
- ☐ Mostly high-income (3)
- ☐ Pretty mixed in terms of income (4)

Q42 Grid Question

About what percentage of your patients are: (GRID)

	0 to less ...	Between 10...	Between 25...	50% or more	Not sure
African American (Your best ...)	<input type="radio"/>	<input type="radio"/>	<input type="radio"/>	<input type="radio"/>	<input type="radio"/>
Hispanic/Latino (Your best e...)	<input type="radio"/>	<input type="radio"/>	<input type="radio"/>	<input type="radio"/>	<input type="radio"/>
Elderly (over age 65) (Your ...)	<input type="radio"/>	<input type="radio"/>	<input type="radio"/>	<input type="radio"/>	<input type="radio"/>
Speak little or no English (...)	<input type="radio"/>	<input type="radio"/>	<input type="radio"/>	<input type="radio"/>	<input type="radio"/>
Undocumented immigrants (You...	<input type="radio"/>	<input type="radio"/>	<input type="radio"/>	<input type="radio"/>	<input type="radio"/>
Have complex or numerous hea...	<input type="radio"/>	<input type="radio"/>	<input type="radio"/>	<input type="radio"/>	<input type="radio"/>

Q43 Single Choice

Where is your practice located? (If you work at more than one location, please answer based on the location where you spend the most time.)

- ☐ City (1)
- ☐ Suburb (2)
- ☐ Small town (3)
- ☐ Rural (4)

Q44 Single Choice

How old are you?

- ☐ Under 35 (1)
- ☐ 35-44 (2)
- ☐ 45-54 (3)
- ☐ 55-64 (4)
- ☐ 65 or older (5)

Q45 Single Choice

Are you:

- ☐ Male (1)
- ☐ Female (2)

Q46 Single Choice

Are you of Hispanic or Latino background, such as Mexican, Puerto Rican, Cuban, or some other Latin American background?

- ☐ Yes (1)
- ☐ No (2)

Q47 Single Choice

What is your race?

- ☐ White or European-American (1)
- ☐ Black or African-American (2)
- ☐ Asian or Asian American/Pacific Islander (3)
- ☐ Mixed race (4)
- ☐ Hispanic/Latino (5)
- ☐ Native American/American Indian (6)
- ☐ Middle Eastern (7)
- ☐ Asian Indian/East Indian (8)
- ☐ Other race (9)

Q48 Single Choice

In politics today, do you consider yourself:

- ☐ A Republican (1)
- ☐ A Democrat (2)
- ☐ An Independent (3)
- ☐ No preference/Not interested in politics (4)
- ☐ Other party (5)

demographic.medical.specialty Single Choice

What is your medical specialty?

- ☐ Primary Care & General Practice (1)
- ☐ Internal Medicine Subspecialties (2)
- ☐ Pediatrics & Child Health (3)

Target_physicians_had_to_sp

Single Choice

Are you a physician that spends at least 60% of their work time providing care to patients as a primary care provider?

☐ yes

(1)